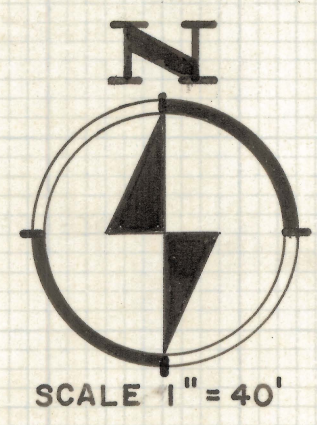
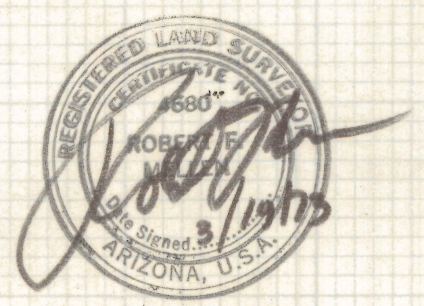
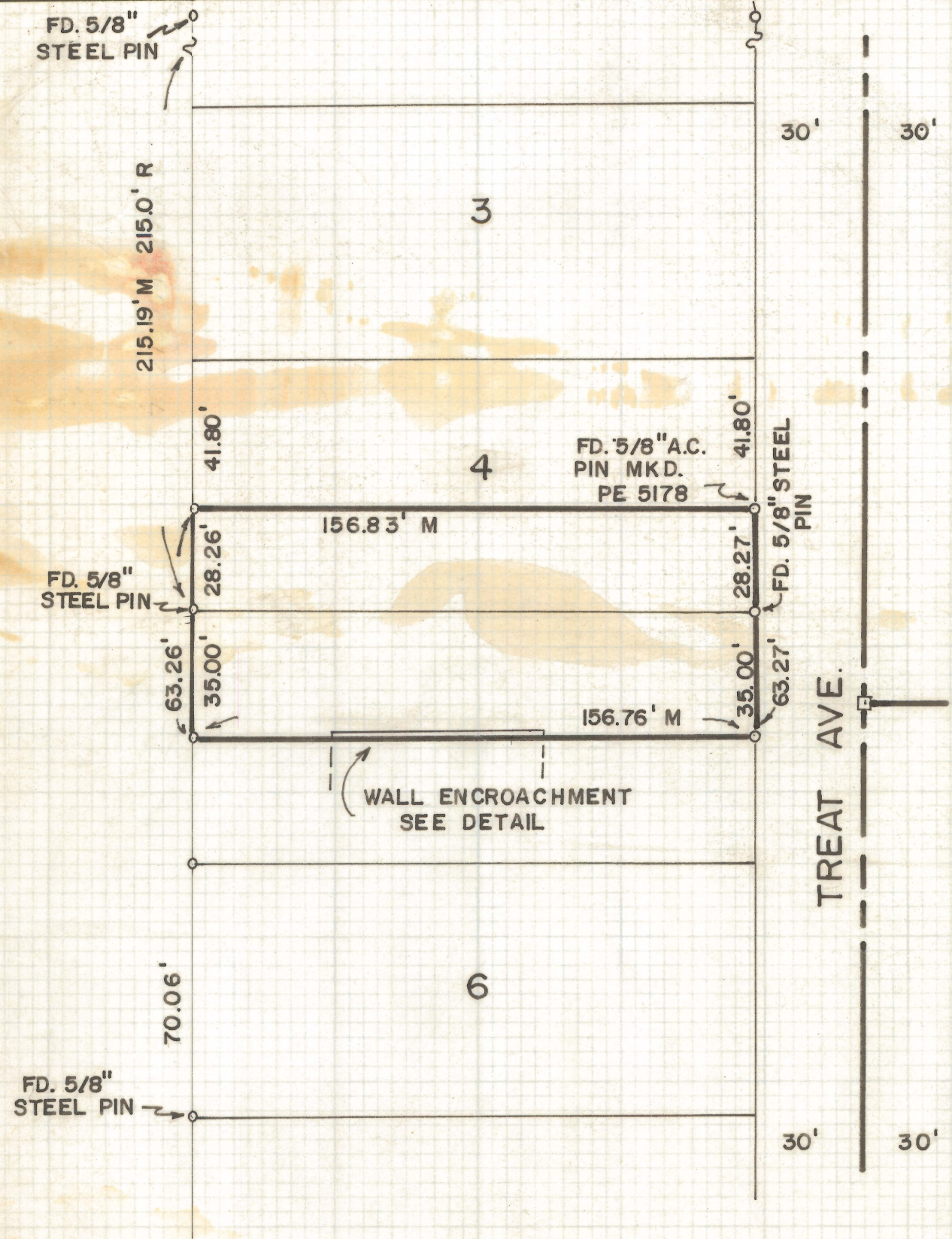


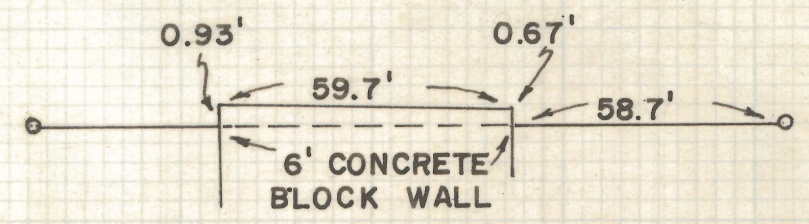
# **DISCLAIMER:**

**This unrecorded Record of Survey was donated to the City of Tucson. The City of Tucson provides this data for your personal use "as is." Additionally, the City of Tucson provides this information with the understanding that it is not guaranteed to be accurate, correct or complete and conclusions drawn from such information are the responsibility of the user.**



**RESULTS OF SURVEY OF**

LOT 4 EXCEPT THE NORTH 41.8 FEET AND THE SOUTH 35.0 FEET OF LOT 5 OF BLOCK 12 OF EL CAMPO ESTATES SUBDIVISION AS RECORDED IN BOOK 7 OF MAPS AND PLATS AT PAGE 85 IN THE OFFICE OF THE PIMA COUNTY RECORDER, PIMA COUNTY, ARIZONA



DETAIL OF WALL ENCROACHMENT

**NOTES**  
 (1) INDICATES 5/8" STEEL PIN SET MKD. L.S. 4680 UNLESS NOTED

ROBERT F. MELLEN  
 REGISTERED LAND SURVEYOR  
 TUCSON, ARIZONA  
 JOB # 73-37

Z-2020-197