

# **DISCLAIMER:**

**This unrecorded Record of Survey was donated to the City of Tucson. The City of Tucson provides this data for your personal use "as is." Additionally, the City of Tucson provides this information with the understanding that it is not guaranteed to be accurate, correct or complete and conclusions drawn from such information are the responsibility of the user.**

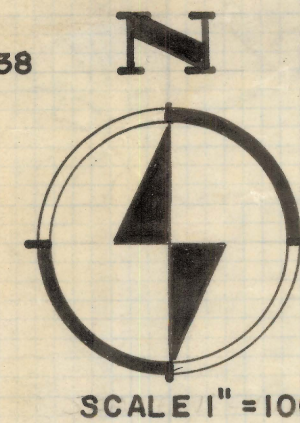
FD. 5/8" STEEL PIN  
MKD. RE. 5178  
SET BY CELLA, BARR  
& EVAN AUG. 1972

FD. PK. NAIL  
APPROX. SMITHA  
& BLANTON LINE

NORTH LINE SEC. 24

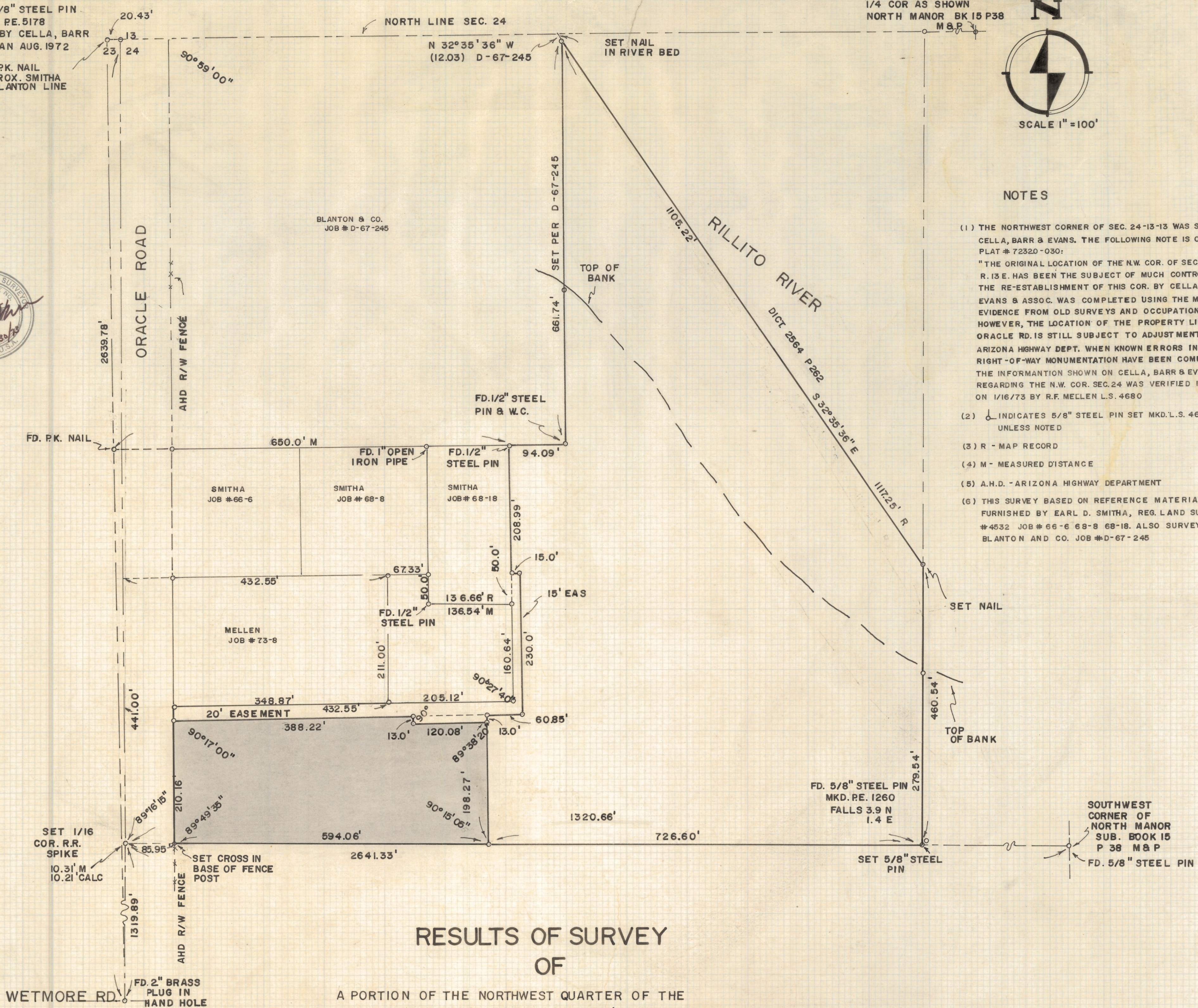
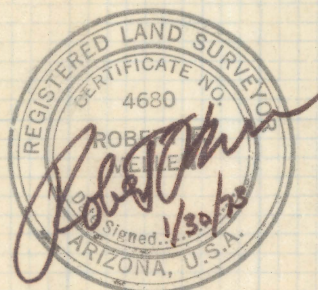
N 32°35'36" W  
(12.03) D-67-245

FD. 2" OPEN IRON PIPE  
1/4 COR AS SHOWN  
NORTH MANOR BK 15 P38  
M.B.P.



NOTES

- (1) THE NORTHWEST CORNER OF SEC. 24-13-13 WAS SET BY CELLA, BARR & EVANS. THE FOLLOWING NOTE IS ON THEIR PLAT # 72320-030:  
"THE ORIGINAL LOCATION OF THE N.W. COR. OF SEC. 24, T. 13 S. R. 13 E. HAS BEEN THE SUBJECT OF MUCH CONTROVERSY. THE RE-ESTABLISHMENT OF THIS COR. BY CELLA, BARR, EVANS & ASSOC. WAS COMPLETED USING THE MOST RELIABLE EVIDENCE FROM OLD SURVEYS AND OCCUPATION AVAILABLE. HOWEVER, THE LOCATION OF THE PROPERTY LINE ALONG ORACLE RD. IS STILL SUBJECT TO ADJUSTMENT BY THE ARIZONA HIGHWAY DEPT. WHEN KNOWN ERRORS IN THEIR RIGHT-OF-WAY MONUMENTATION HAVE BEEN COMPLETED."  
THE INFORMATION SHOWN ON CELLA, BARR & EVANS MAP REGARDING THE N.W. COR. SEC. 24 WAS VERIFIED IN THE FIELD ON 1/16/73 BY R.F. MELLENS L.S. 4680
- (2)  $\circ$  INDICATES 5/8" STEEL PIN SET MKD. L.S. 4680 UNLESS NOTED
- (3) R - MAP RECORD
- (4) M - MEASURED DISTANCE
- (5) A.H.D. - ARIZONA HIGHWAY DEPARTMENT
- (6) THIS SURVEY BASED ON REFERENCE MATERIAL FURNISHED BY EARL D. SMITHA, REG. LAND SURVEYOR #4532 JOB # 66-6 68-8 68-18. ALSO SURVEY BY BLANTON AND CO. JOB # D-67-245



RESULTS OF SURVEY  
OF

A PORTION OF THE NORTHWEST QUARTER OF THE  
NORTHWEST QUARTER OF SECTION TWENTY-FOUR,  
TOWNSHIP THIRTEEN SOUTH OF RANGE THIRTEEN  
EAST, GILA AND SALT RIVER BASE AND MERIDIAN,  
PIMA COUNTY, ARIZONA

ROBERT F. MELLENS  
REGISTERED LAND SURVEYOR  
TUCSON, ARIZONA  
JOB # 73-15

Z-2020-198  
REVISED JOB # 73-50