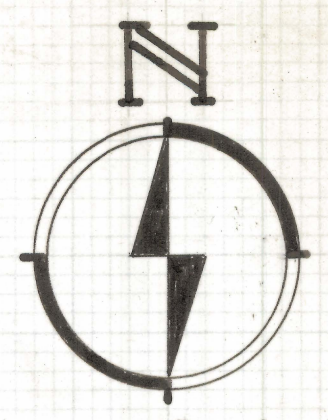
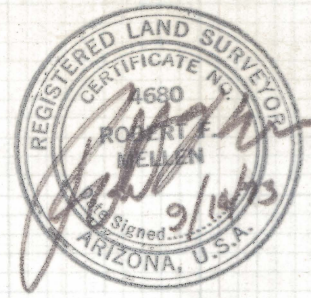


DISCLAIMER:

This unrecorded Record of Survey was donated to the City of Tucson. The City of Tucson provides this data for your personal use "as is." Additionally, the City of Tucson provides this information with the understanding that it is not guaranteed to be accurate, correct or complete and conclusions drawn from such information are the responsibility of the user.



SANTA RITA AVE.

40'

40'

2

3

4

5

6

7

8

366.00

30.61

30.71

214.83

24.72

24.80

SOUTHERN PACIFIC R/R

18

17

134.77' R

134.83'

16

15

14

12.99'

92.17

BLOCK II

WAREHOUSE AVE.

18TH AVE.

MOUNTAIN AVE.

40'

40'

RESULTS OF SURVEY OF

A PORTION OF BLOCK II OF MONTCLAIR ADDITION AS RECORDED IN BOOK 2 OF MAPS AND PLATS AT PAGE 33B AND BLOCK 35 OF BRUCKNER'S ADDITION AS RECORDED IN BOOK 4 OF MAPS AND PLATS AT PAGE 81C IN THE OFFICE OF THE PIMA COUNTY RECORDER, PIMA COUNTY, ARIZONA

NOTES

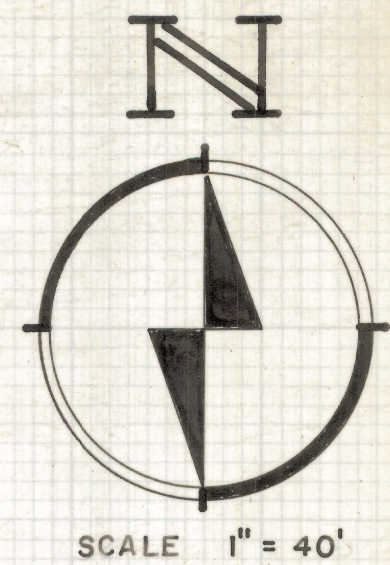
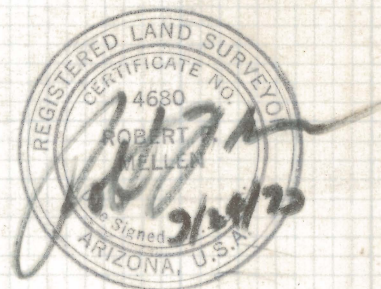
INDICATES 2" BRASS PLOG SET IN CONC. PD.

ROBERT F. MELLEN
REGISTERED LAND SURVEYOR
TUCSON, ARIZONA

JOB # 73-123

IM

Z-2020-202-001

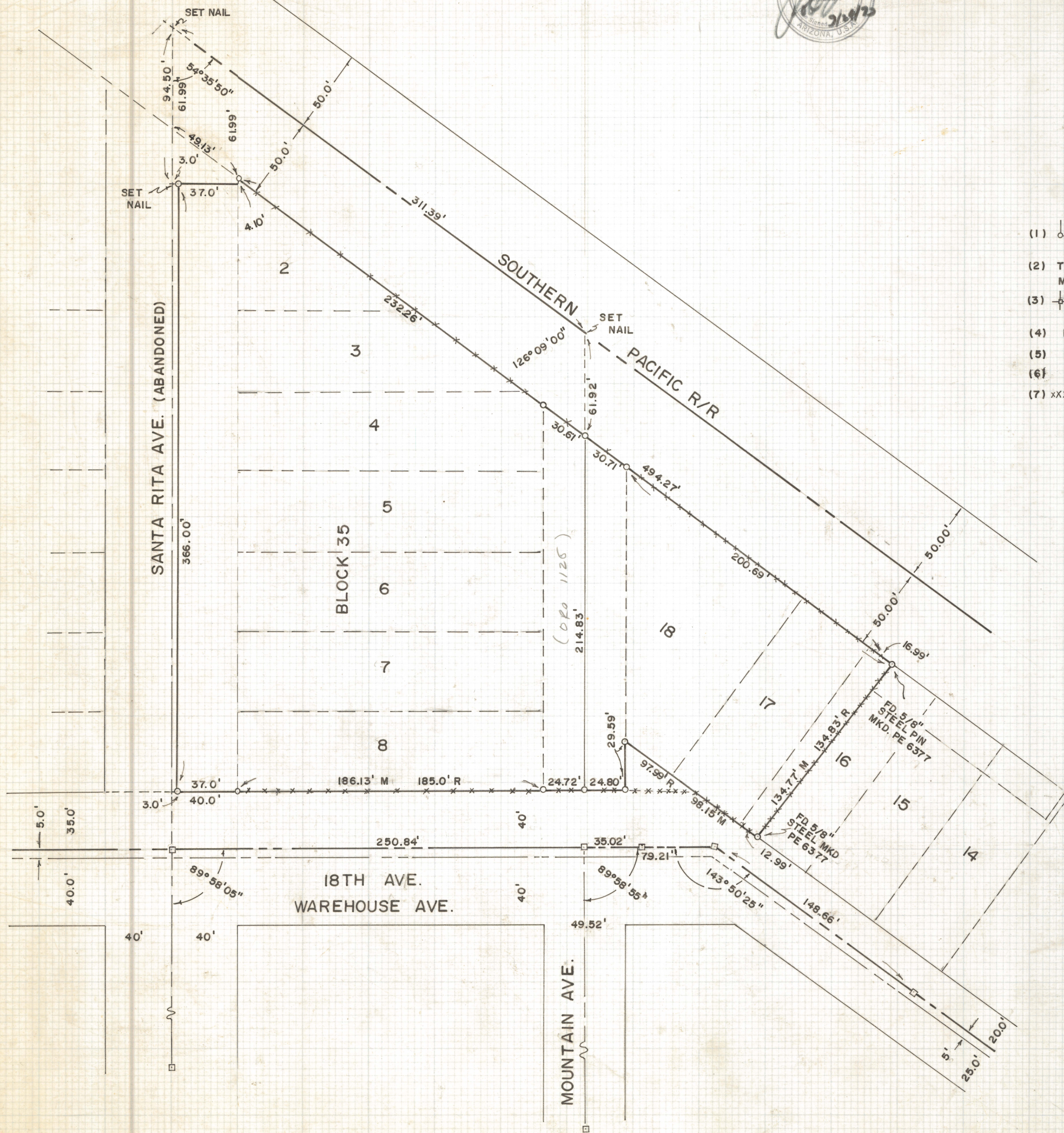


NOTES

- (1) INDICATES 1/2" STEEL PIN SET MKD. L.S. 4680 UNLESS NOTED
- (2) THIS SURVEY BASED ON CITY OF TUCSON SURVEY MONUMENT MAP
- (3) INDICATES 2" BRASS PLUG SET IN CONCRETE (CITY OF TUCSON)
- (4) REF. CITY OF TUCSON FIELD BOOK #1055
- (5) M - MEASURED
- (6) R - MAP OR DEED RECORD
- (7) INDICATES 8' WOVEN WIRE FENCE

RESULTS OF SURVEY OF

A PORTION OF BLOCK II OF MONTCLAIR ADDITION AS RECORDED IN BOOK 2 OF MAPS AND PLATS AT PAGE 33B AND BLOCK 35 OF BRUCKNER'S ADDITION AS RECORDED IN BOOK 4 OF MAPS AND PLATS AT PAGE 81C IN THE OFFICE OF THE PIMA COUNTY RECORDER, PIMA COUNTY, ARIZONA



ROBERT F. MELLEN
REGISTERED LAND SURVEYOR
TUCSON, ARIZONA

JOB #73-123

1M

Z-2020-202-002