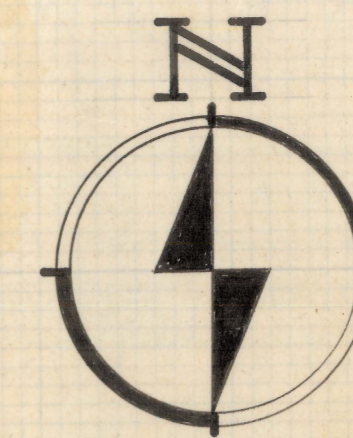
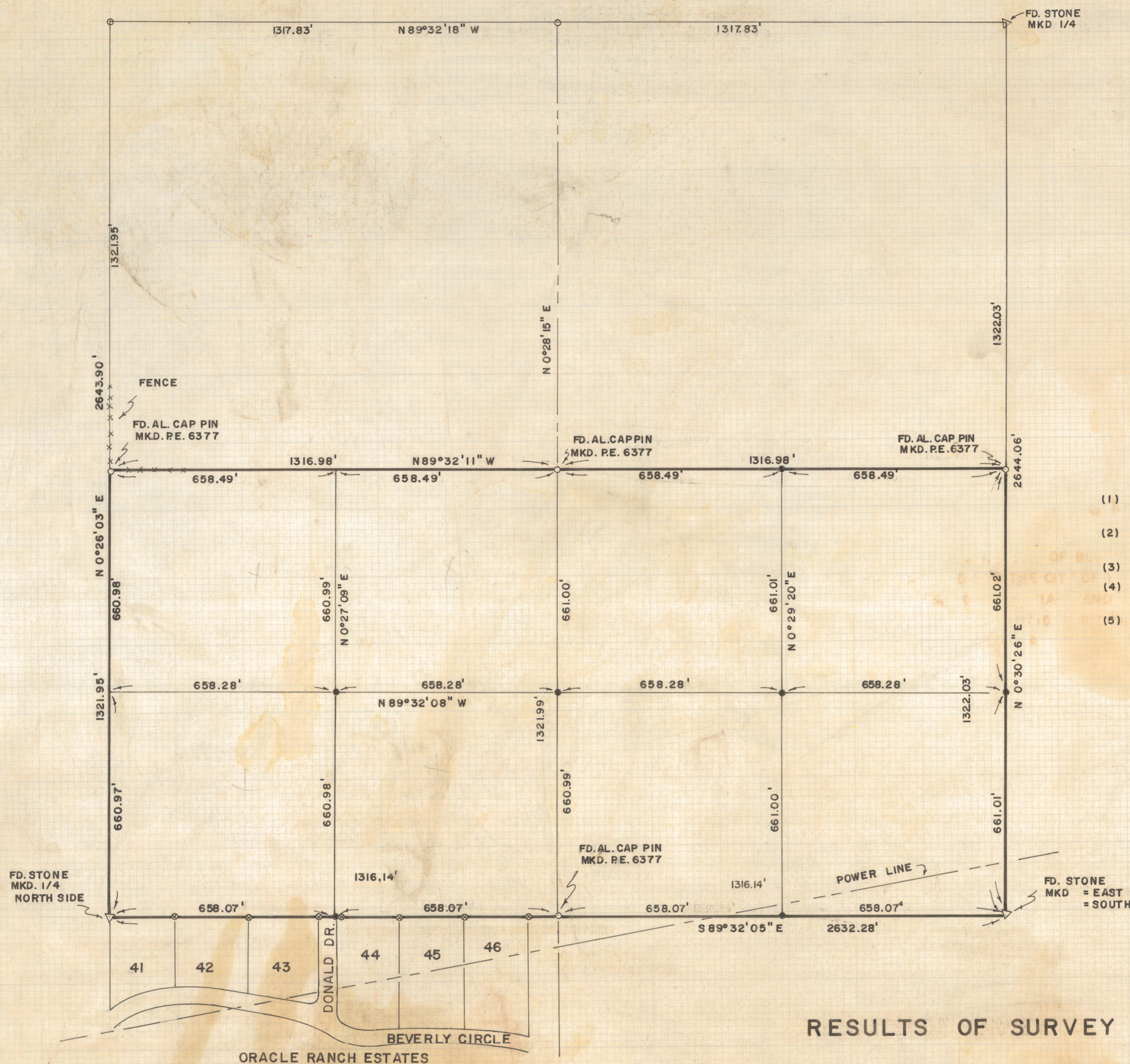


DISCLAIMER:

This unrecorded Record of Survey was donated to the City of Tucson. The City of Tucson provides this data for your personal use "as is." Additionally, the City of Tucson provides this information with the understanding that it is not guaranteed to be accurate, correct or complete and conclusions drawn from such information are the responsibility of the user.



SCALE 1"=200'



NOTES

- (1) INDICATES STONE CORNER FOUND MARKED AS INDICATED
- (2) INDICATES 5/8" ALUMINUM CAPPED PIN FOUND MARKED P.E. 6377
- (3) NOTHING FOUND OR SET
- (4) INDICATES 1/2" STEEL PIN MARKED L.S. 4680 SET
- (5) INDICATES 5/8" STEEL PIN MARKED P.E. 6377

RESULTS OF SURVEY

OF THE SOUTH HALF OF THE SOUTHEAST QUARTER OF SECTION TWENTY-TWO, TOWNSHIP NINE SOUTH OF RANGE FIFTEEN EAST, GILA AND SALT RIVER BASE AND MERIDIAN, PINAL COUNTY, ARIZONA

ROBERT F. MELLEN
REGISTERED LAND SURVEYOR
TUCSON, ARIZONA

JOB # 73-126

1M

Z-2020-203