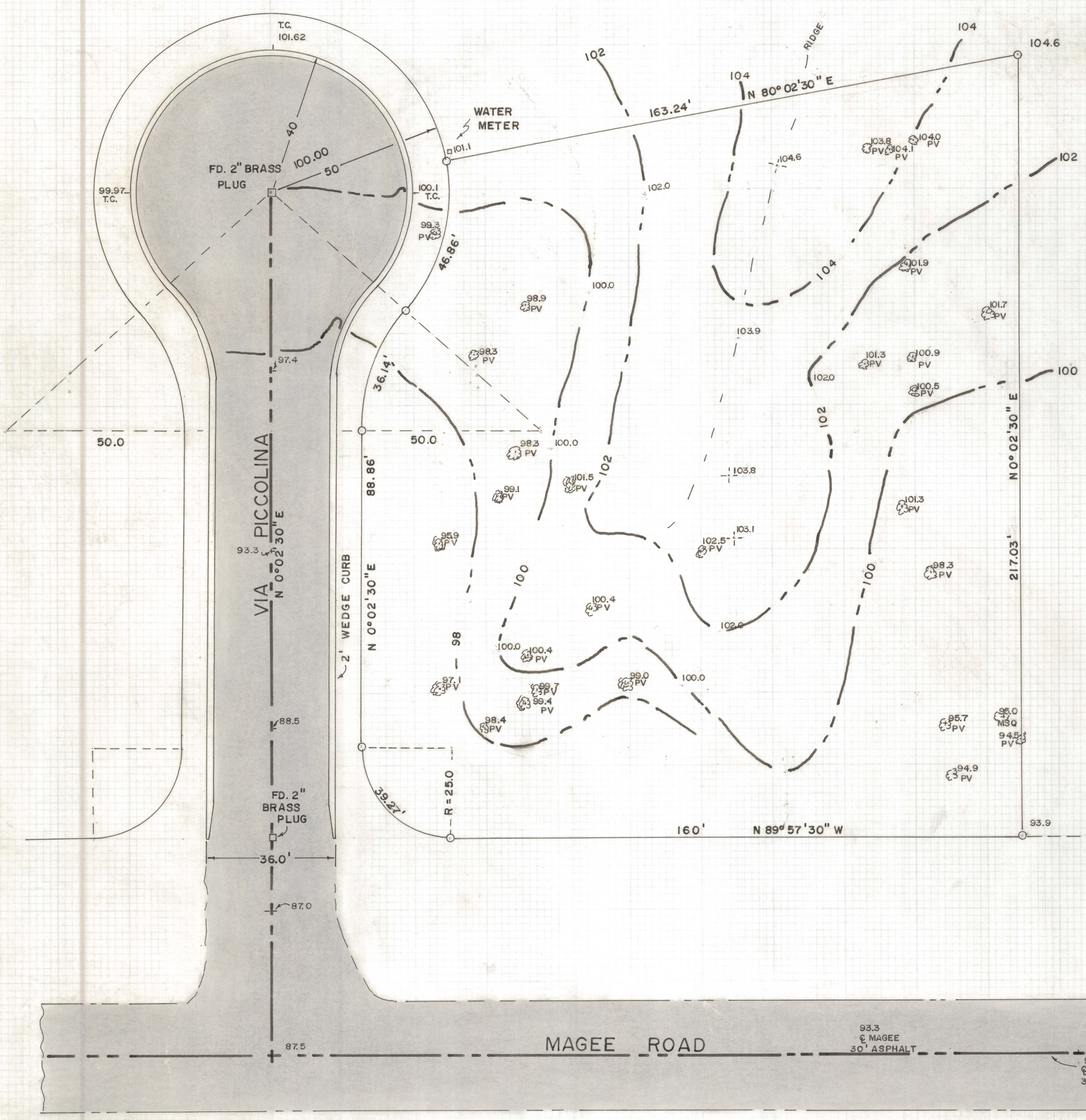
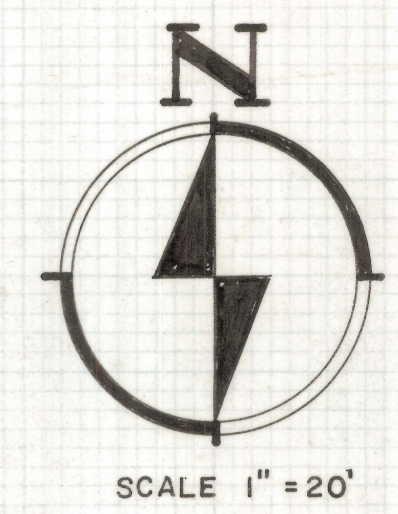


# **DISCLAIMER:**

**This unrecorded Record of Survey was donated to the City of Tucson. The City of Tucson provides this data for your personal use "as is." Additionally, the City of Tucson provides this information with the understanding that it is not guaranteed to be accurate, correct or complete and conclusions drawn from such information are the responsibility of the user.**





### RESULTS OF TOPOGRAPHICAL SURVEY

OF LOT 1010 OF THE TUCSON NATIONAL ESTATES  
LOTS 1000 THRU 1082 AS RECORDED IN BOOK 18  
OF MAPS AND PLATS AT PAGE 28 IN THE OFFICE  
OF THE PIMA COUNTY RECORDER, PIMA COUNTY,  
ARIZONA

#### NOTES

- (1) INDICATES 5/8" LEAD CAP PIN FOUND UNLESS NOTED
- (2) P.V. PALO VERDE TREE
- (3) MSQ MESQUITE TREE

ROBERT F. MELLEN  
REGISTERED LAND SURVEYOR  
TUCSON, ARIZONA

JOB #73-141

IM

Z-2020-207