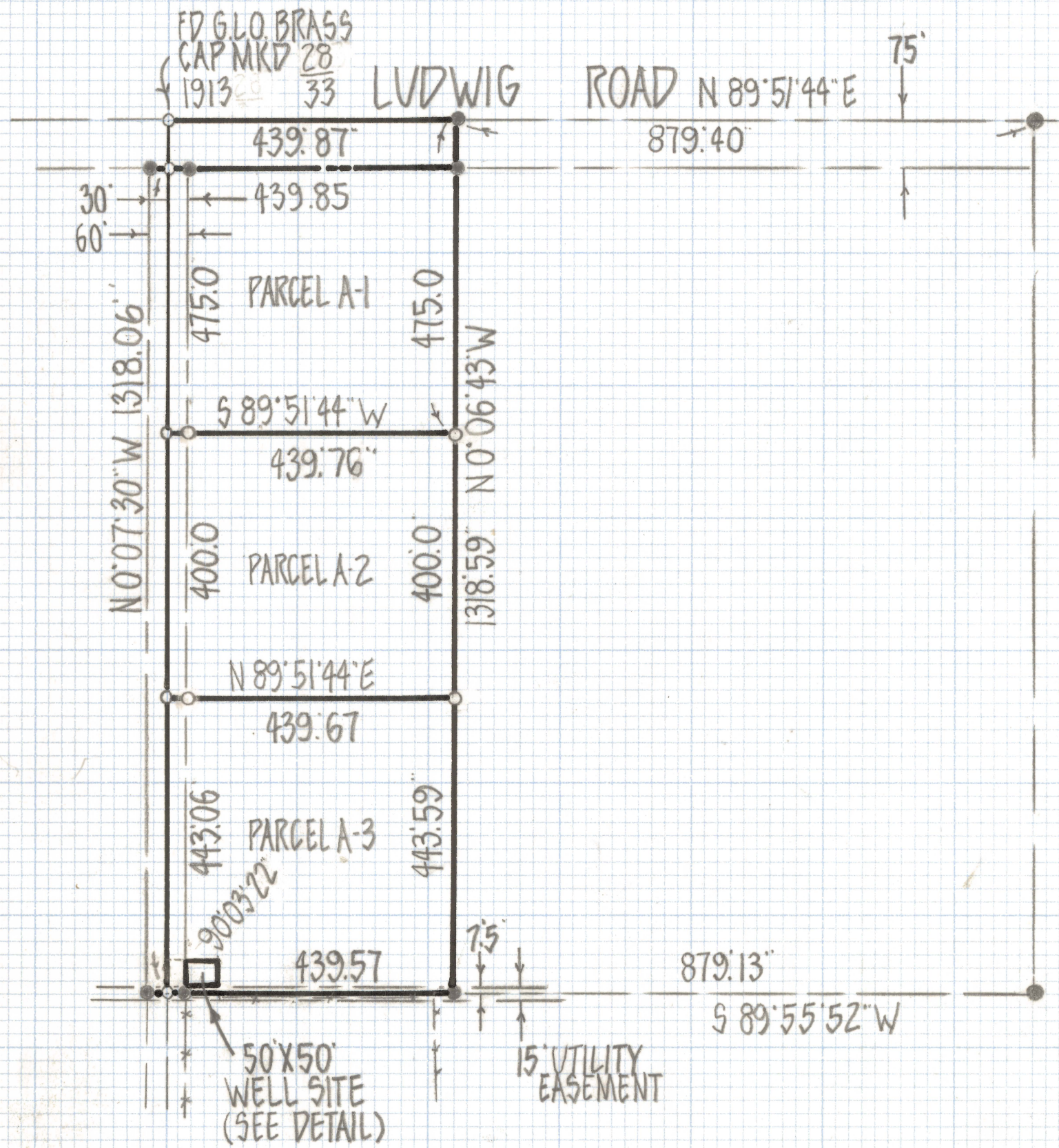
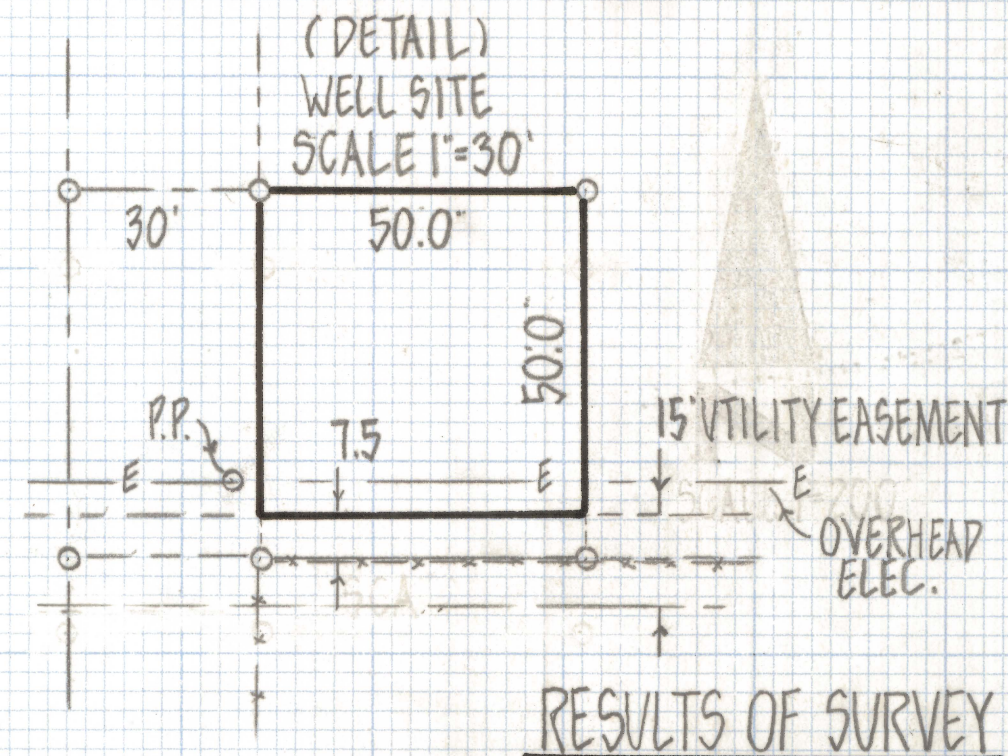


DISCLAIMER:

This unrecorded Record of Survey was donated to the City of Tucson. The City of Tucson provides this data for your personal use "as is." Additionally, the City of Tucson provides this information with the understanding that it is not guaranteed to be accurate, correct or complete and conclusions drawn from such information are the responsibility of the user.



SCALE 1"=20'



RESULTS OF SURVEY

OF A PORTION OF THE NORTHWEST QUARTER OF THE NORTHEAST QUARTER OF SECTION THIRTY-THREE TOWNSHIP TWELVE SOUTH RANGE ELEVEN EAST GILA AND SALT RIVER BASE AND MERIDIAN PIMA COUNTY ARIZONA

NOTES

- (1) ♀-INDICATES SET 1/2" STEEL PIN MKD L.S. 4680 UNLESS NOTED
- (2) ♂-INDICATES FOUND 1/2" STEEL PIN MKD L.S. 4680 UNLESS NOTED
- (3) SEE JOBS 80-88, 80-10



ROBERT F. MELLEN
REGISTERED LAND SURVEYOR
TUCSON, ARIZONA
JOB # 81-4