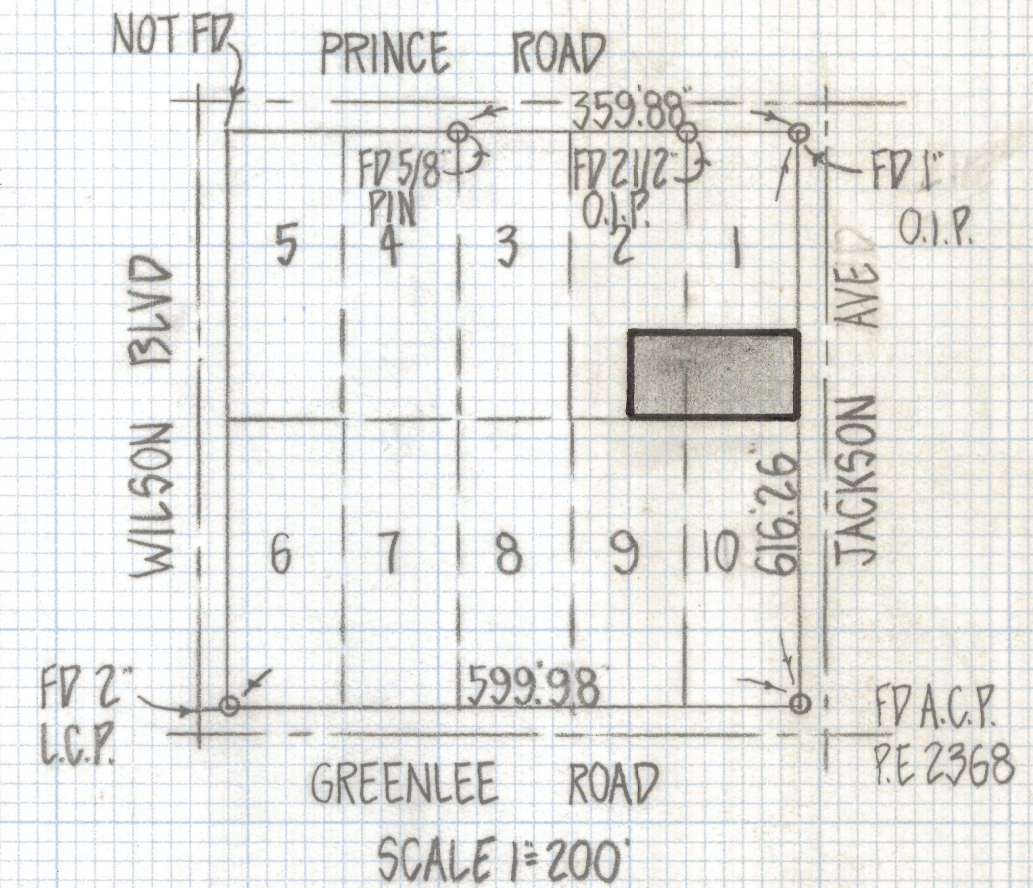
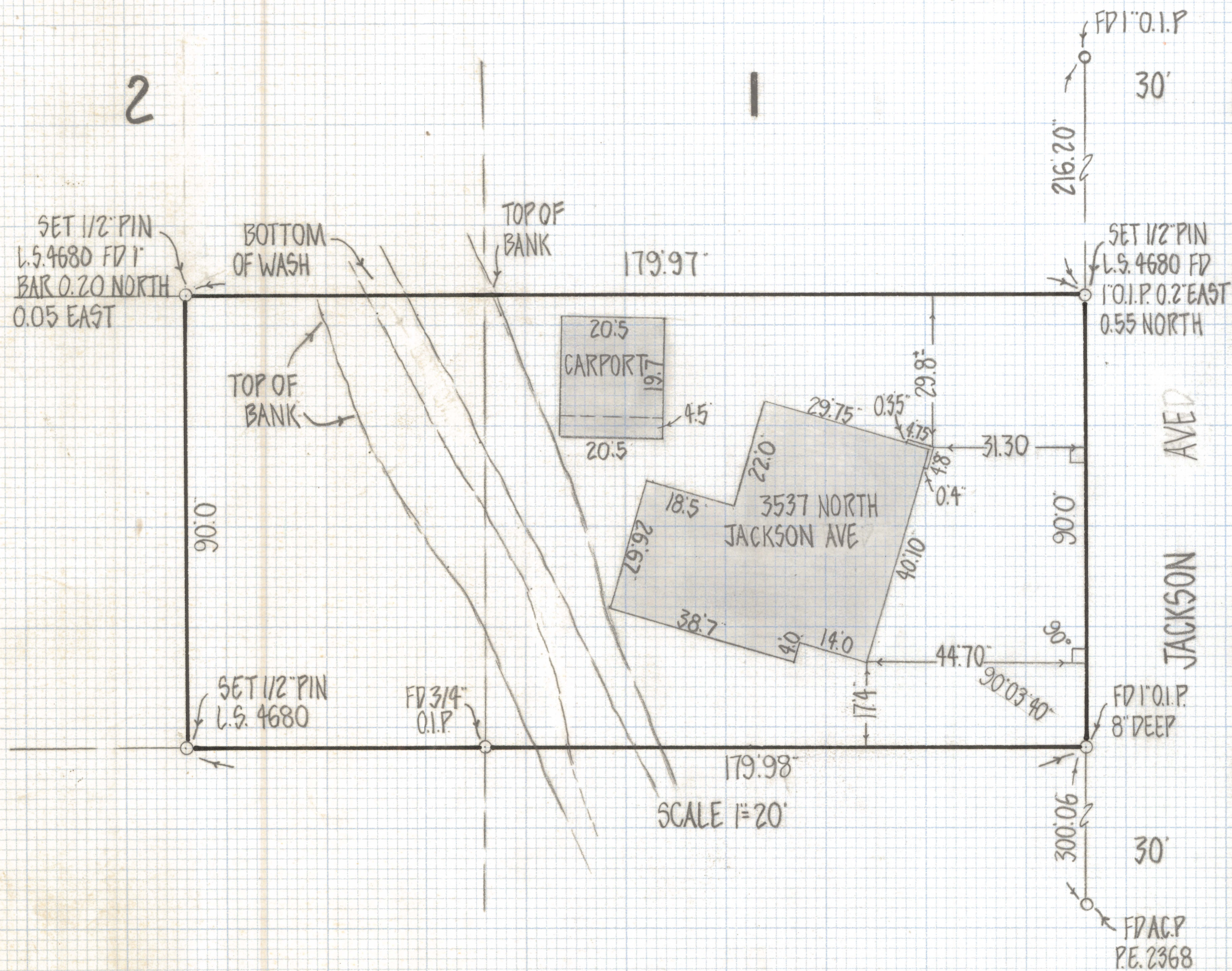


DISCLAIMER:

This unrecorded Record of Survey was donated to the City of Tucson. The City of Tucson provides this data for your personal use "as is." Additionally, the City of Tucson provides this information with the understanding that it is not guaranteed to be accurate, correct or complete and conclusions drawn from such information are the responsibility of the user.



RESULTS OF SURVEY

OF THE SOUTH 90 FEET OF LOT 1 AND THE SOUTH 90 FEET
 OF THE EAST HALF OF LOT 2 BLOCK 2 RICHLAND HEIGHTS RECORDED
 IN BOOK 4 OF MAPS AND PLATS AT PAGE 100 IN THE OFFICE OF
 THE PIMA COUNTY RECORDER PIMA COUNTY ARIZONA

NOTES

- (1) ◊ INDICATES SET 1/2" PIN MKD L.S. 4680 UNLESS NOTED
- (2) O.I.P. - OPEN IRON PIPE



ROBERT F. MELLEN
 REGISTERED LAND SURVEYOR
 TUCSON, ARIZONA
 JOB # 81-11