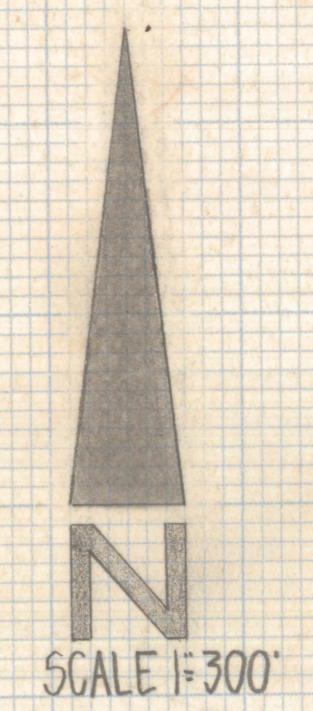
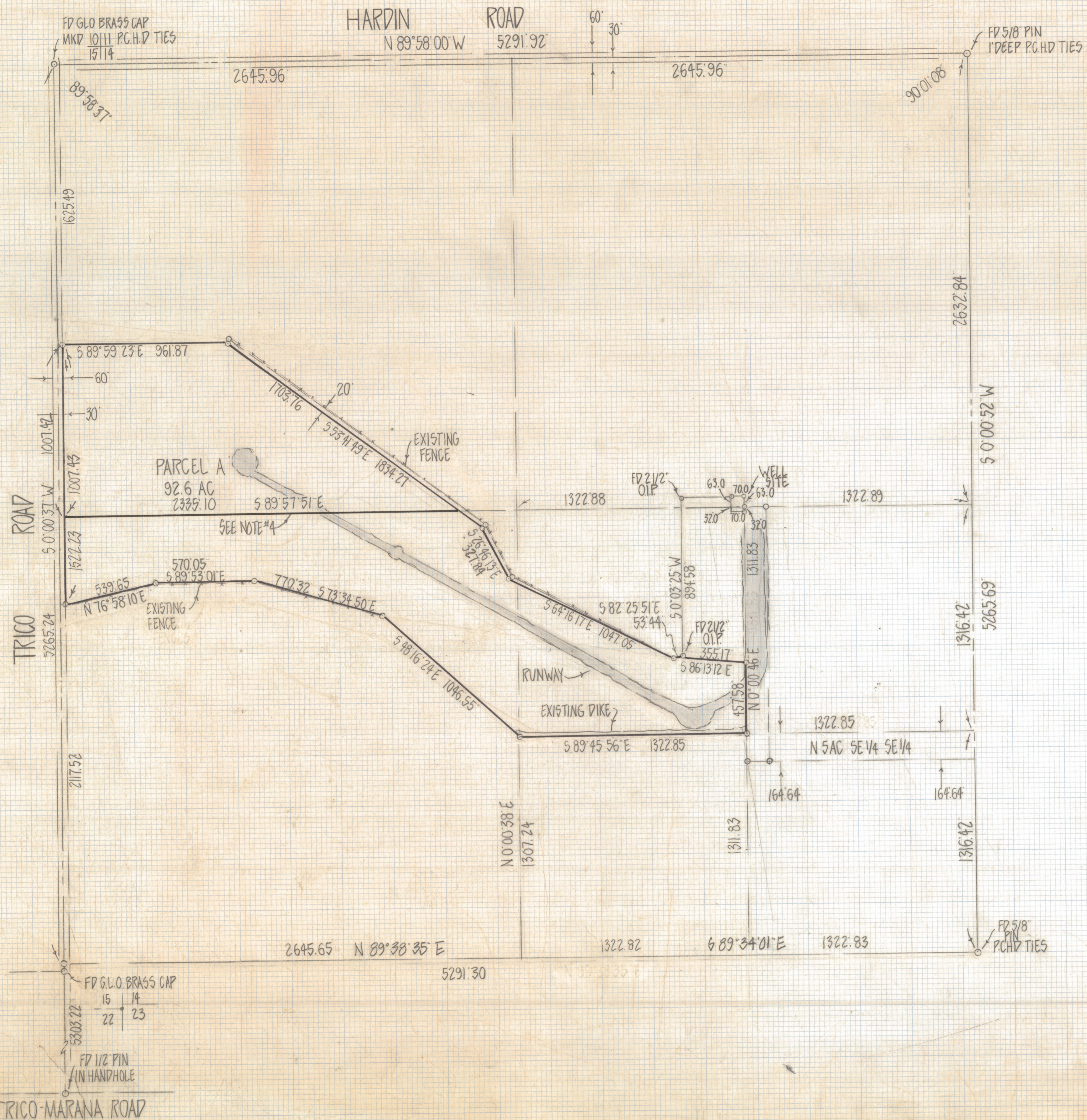


DISCLAIMER:

This unrecorded Record of Survey was donated to the City of Tucson. The City of Tucson provides this data for your personal use "as is." Additionally, the City of Tucson provides this information with the understanding that it is not guaranteed to be accurate, correct or complete and conclusions drawn from such information are the responsibility of the user.



RESULTS OF SURVEY

OF A PORTION OF SECTION 14 TOWNSHIP 11 SOUTH RANGE 10 EAST
GILA AND SALT RIVER BASE AND MERIDIAN PIMA COUNTY ARIZONA

NOTES

- (1) BASIS OF BEARINGS N 89° 58' 00" W FOR NORTH LINE OF SECTION 14 G.L.O. PLAT DATED 1911
- (2) INDICATES 1/2" STEEL PIN SET MKD L.S. 4680 UNLESS NOTED
- (3) AREA IN NORTHWEST QUARTER 38.1 ACRES
- (4) AREA ABOVE MID-SECTION LINE 16661, 240 FT² 38.1 AC



ROBERT F. MELLEN
REGISTERED LAND SURVEYOR
TUCSON, ARIZONA
JOB # 81-13

REVISED 7/27/81 REVISED 4/27/82

Z-2020-223