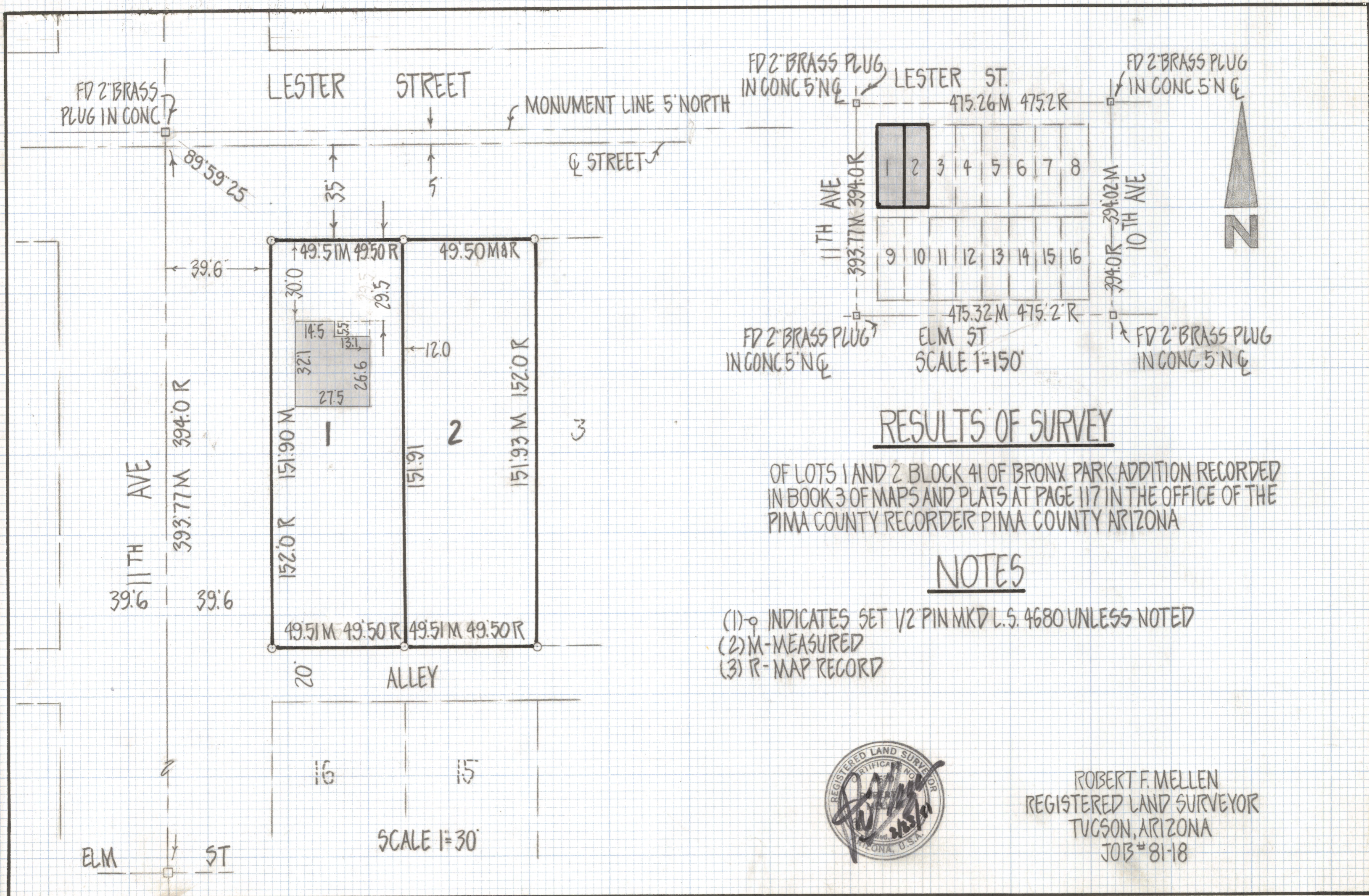


DISCLAIMER:

This unrecorded Record of Survey was donated to the City of Tucson. The City of Tucson provides this data for your personal use "as is." Additionally, the City of Tucson provides this information with the understanding that it is not guaranteed to be accurate, correct or complete and conclusions drawn from such information are the responsibility of the user.



FD 2" BRASS PLUG IN CONC 5' N Q

LESTER STREET

MONUMENT LINE 5' NORTH

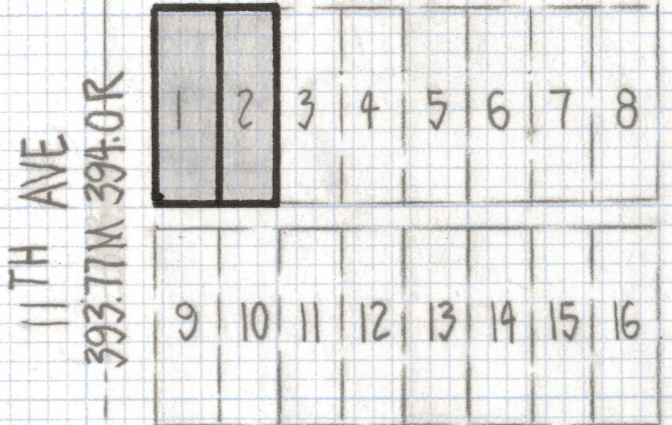
FD 2" BRASS PLUG IN CONC 5' N Q

LESTER ST.

FD 2" BRASS PLUG IN CONC 5' N Q

89°59'25"

Q STREET



39.6 49.51M 49.50R 49.50M 49.50R

11TH AVE 393.77M 394.0R

10TH AVE 394.0R 394.02M

11TH AVE 393.77M 394.0R

FD 2" BRASS PLUG IN CONC 5' N Q

ELM ST SCALE 1"=150'

FD 2" BRASS PLUG IN CONC 5' N Q

RESULTS OF SURVEY

OF LOTS 1 AND 2 BLOCK 41 OF BRONX PARK ADDITION RECORDED IN BOOK 3 OF MAPS AND PLATS AT PAGE 117 IN THE OFFICE OF THE PIMA COUNTY RECORDER PIMA COUNTY ARIZONA

NOTES

- (1) ♀ INDICATES SET 1/2" PIN MKD L.S. 4680 UNLESS NOTED
- (2) M - MEASURED
- (3) R - MAP RECORD



ROBERT F. MELLEN
REGISTERED LAND SURVEYOR
TUCSON, ARIZONA
JOB # 81-18

20' ALLEY

SCALE 1"=30'