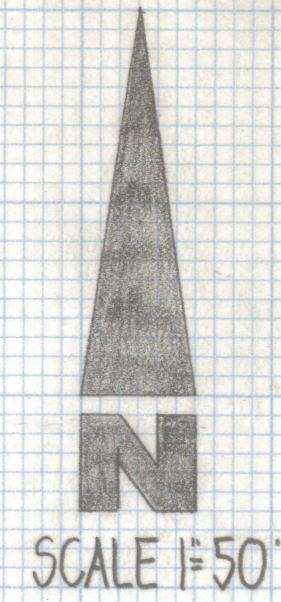


DISCLAIMER:

This unrecorded Record of Survey was donated to the City of Tucson. The City of Tucson provides this data for your personal use "as is." Additionally, the City of Tucson provides this information with the understanding that it is not guaranteed to be accurate, correct or complete and conclusions drawn from such information are the responsibility of the user.

789°46' (R) 5 89°44'E (R)

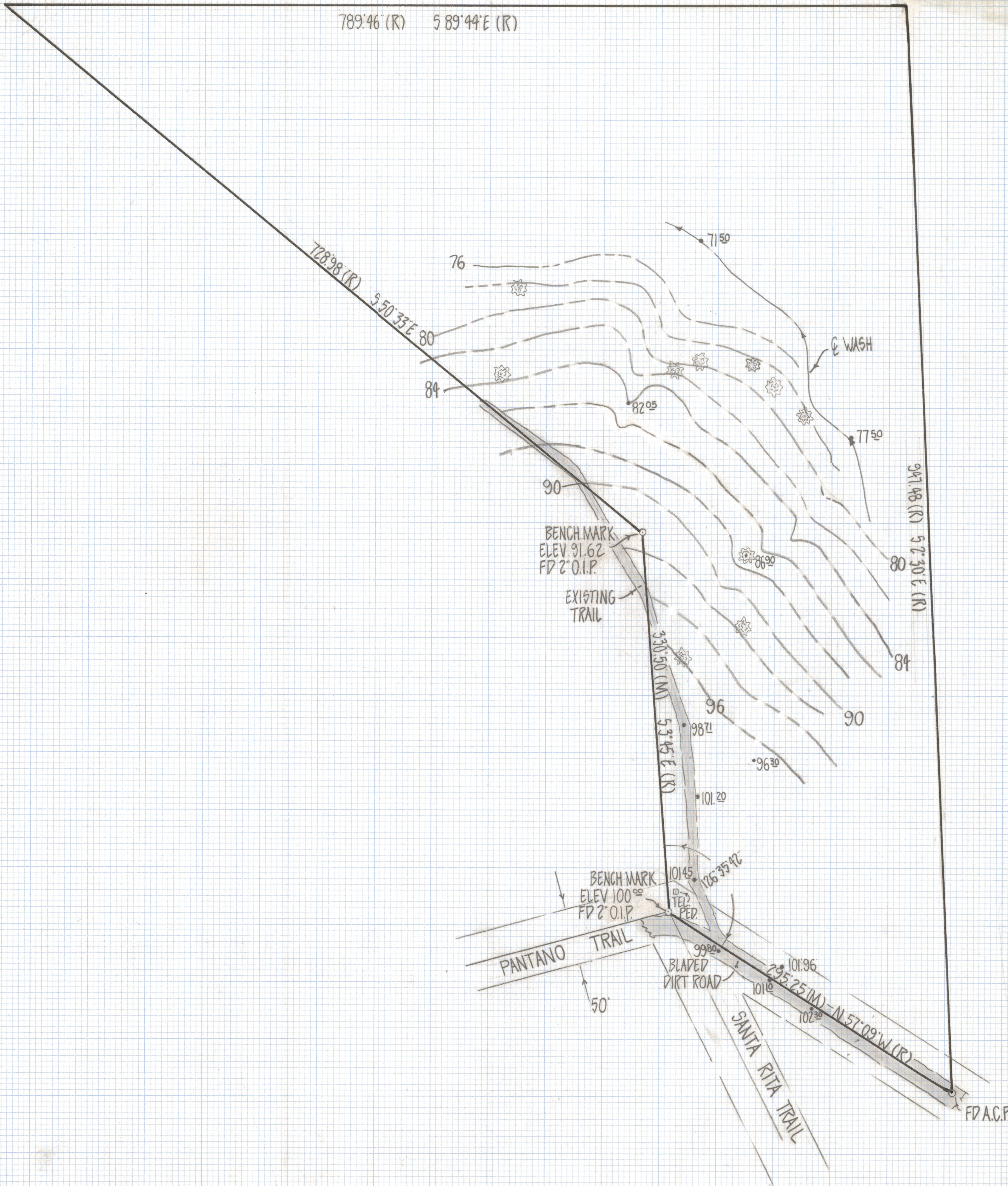


TOPOGRAPHICAL SURVEY OF

A PORTION OF LOT 3 OF RINCON RANCH ESTATES NO. 1
RECORDED IN BOOK 8 OF MAPS AND PLATS AT PAGE 8
IN THE OFFICE OF THE PIMA COUNTY RECORDER PIMA
COUNTY ARIZONA

NOTES

- (1) BENCH MARK DATUM 2" OPEN IRON PIPE PANTANO TRAIL AND SANTA RITA TRAIL ASSUMED 100°
- (2) THIS IS NOT A BOUNDARY SURVEY ONLY CORNERS IDENTIFIED AS FOUND WERE USED TO CONTROL THIS TOPOGRAPHICAL SURVEY
- (3) M-MEASURED
- (4) R-RECORD
- (5) CONTOUR INTERVAL 2' FEET
- (6) * INDICATES PALO VERDE TREE



ROBERT F. MELLEN
REGISTERED LAND SURVEYOR
TUCSON, ARIZONA
JOB # 81-24