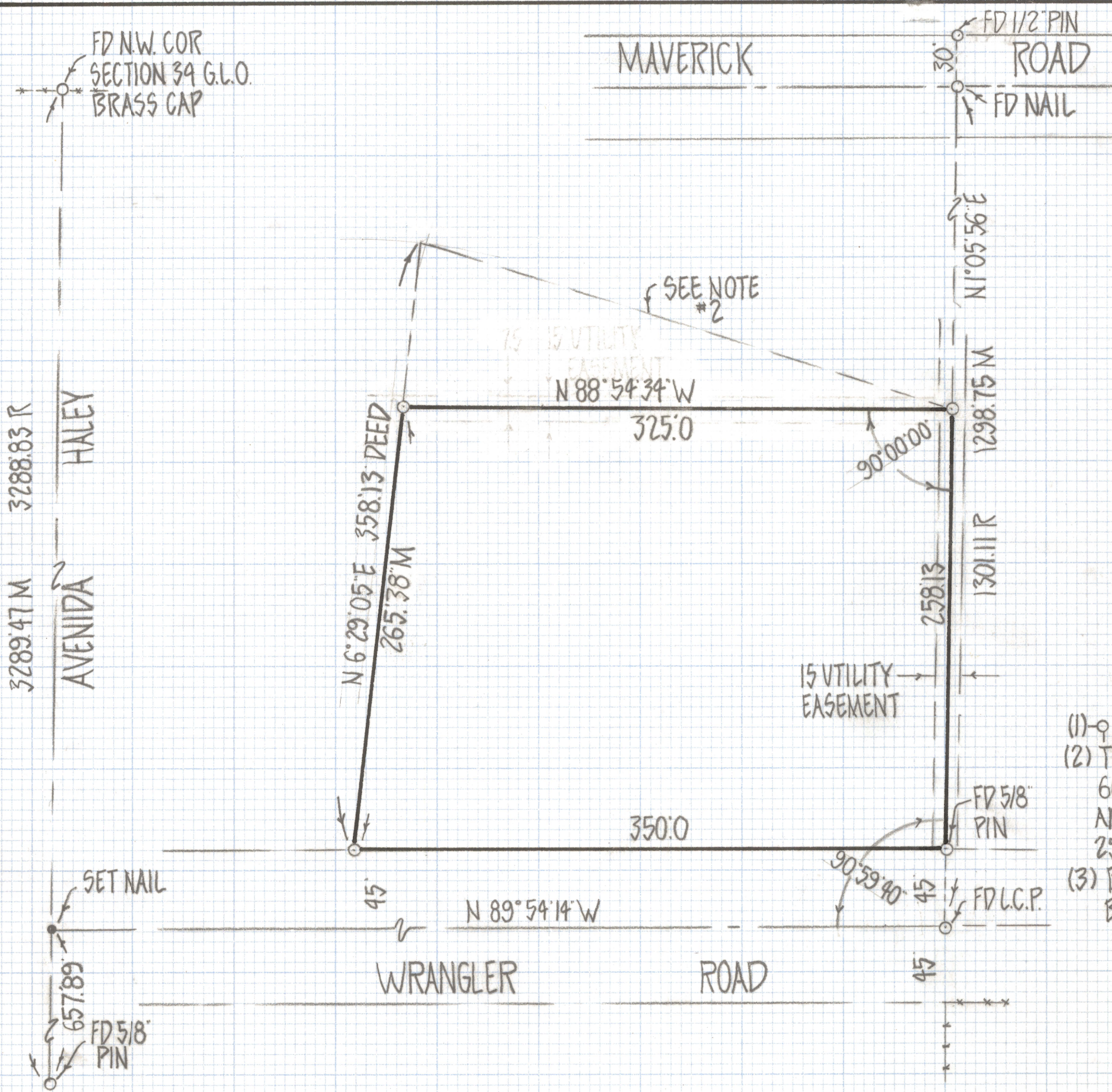


DISCLAIMER:

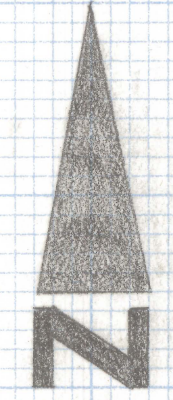
This unrecorded Record of Survey was donated to the City of Tucson. The City of Tucson provides this data for your personal use "as is." Additionally, the City of Tucson provides this information with the understanding that it is not guaranteed to be accurate, correct or complete and conclusions drawn from such information are the responsibility of the user.



FD N.W. COR
SECTION 39 G.L.O.
BRASS CAP

MAVERICK

FD 1/2" PIN
ROAD
FD NAIL



SCALE 1"=60'



SEE NOTE #2

N 6° 29' 05" E 358.13 DEED
265.38 M

N 88° 54' 34" W
325.0

N 1° 05' 56" E

1298.75 M

90° 00' 00"

258.13
1301.11 R

15 UTILITY
EASEMENT

350.0

FD 5/8" PIN

90° 59' 40"

FD L.C.P.

N 89° 54' 14" W

WRANGLER ROAD

SET NAIL

45

45

657.89
FD 5/8" PIN

RESULTS OF SURVEY

OF A PORTION OF LOT 25, WRANGLER RANCHES RECORDED IN BOOK 13 OF MAPS AND PLATS AT PAGE 81 IN THE OFFICE OF THE PIMA COUNTY RECORDER PIMA COUNTY ARIZONA

NOTES

- (1) ♀ INDICATES SET 1/2" PIN MKD L.S. 4680 UNLESS NOTED
- (2) THE DISTANCE FOR THE WEST LINE AS SHOWN ON DOCKET 6035 PAGE 39 APPEARS TO BE A TYPOGRAPHICAL ERROR AND WAS INTENDED TO BE THE SAME AS THE EAST LINE 258.13
- (3) BASIS OF BEARINGS N 89° 54' 14" W FOR WRANGLER ROAD BOOK 13/81 M&P.

ROBERT F. MELLEN
REGISTERED LAND SURVEYOR
TUCSON, ARIZONA
JOB# 81-25