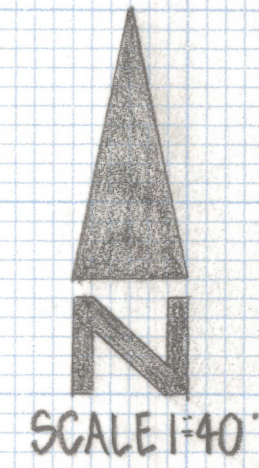
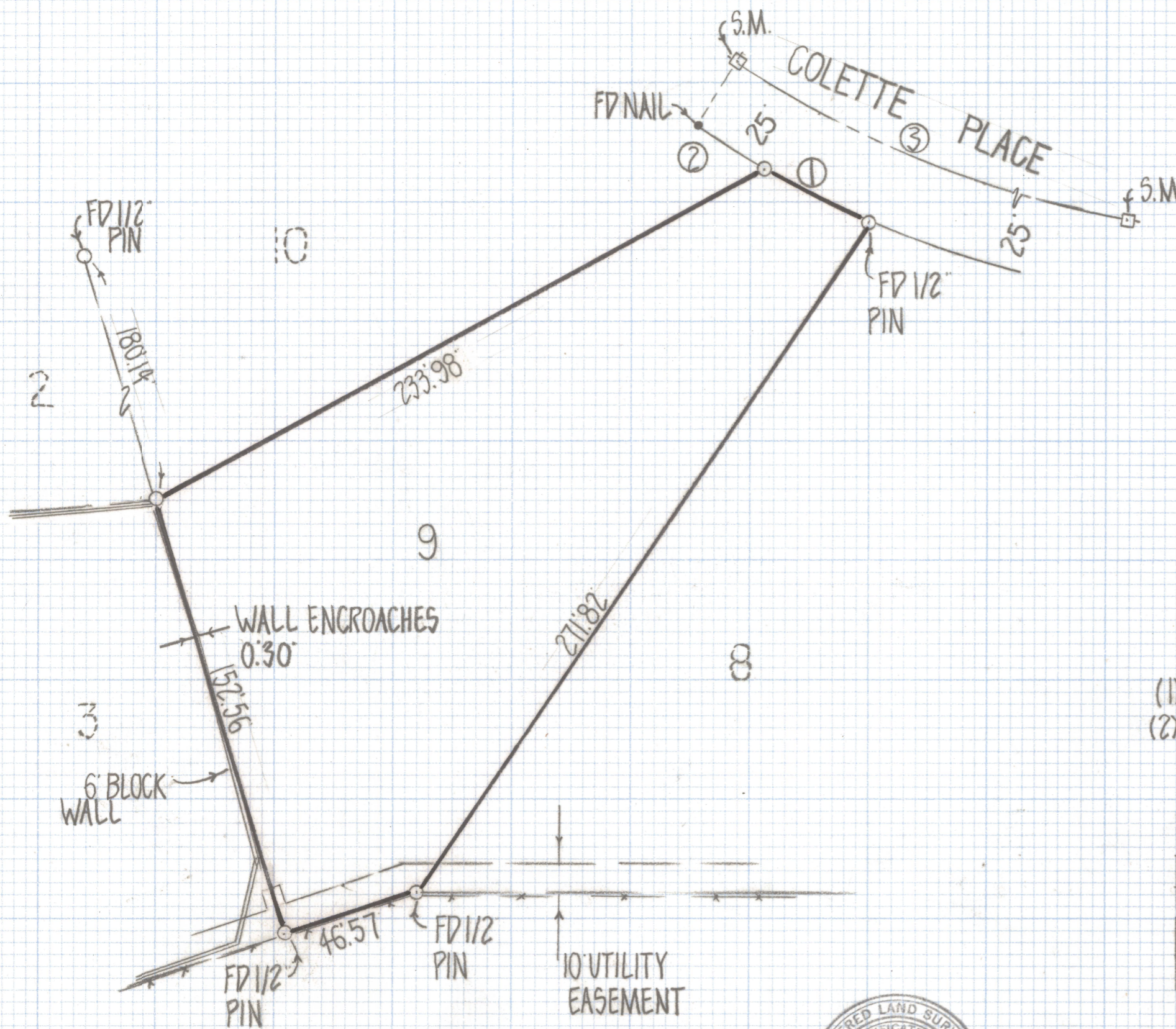


DISCLAIMER:

This unrecorded Record of Survey was donated to the City of Tucson. The City of Tucson provides this data for your personal use "as is." Additionally, the City of Tucson provides this information with the understanding that it is not guaranteed to be accurate, correct or complete and conclusions drawn from such information are the responsibility of the user.



RESULTS OF SURVEY

OF LOT 9 OF SALANO ESTATES #7 RECORDED IN BOOK 28 OF MAPS AND PLATS AT PAGE 49 IN THE OFFICE OF THE PIMA COUNTY RECORDER PIMA COUNTY ARIZONA

NOTES

- (1) ○ INDICATES SET 1/2 PIN MKD L.S. 4680 UNLESS NOTED
- (2) □ INDICATES FOUND 2 BRASS PLUG SET IN CONG.

CURVE DATA				
NO	DELTA	RADIUS	LENGTH	TANGENT
1	622'11"	360.0	40.02	20.03
2	409'29"	360.0	26.13	13.07
3	3426'30"	335.0	201.38	103.82



ROBERT F. MELLEN
 REGISTERED LAND SURVEYOR
 TUCSON, ARIZONA
 JOB# 81-26