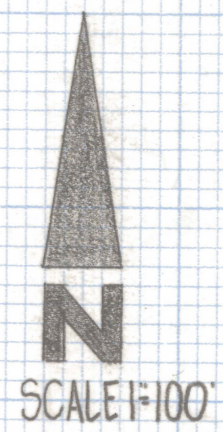
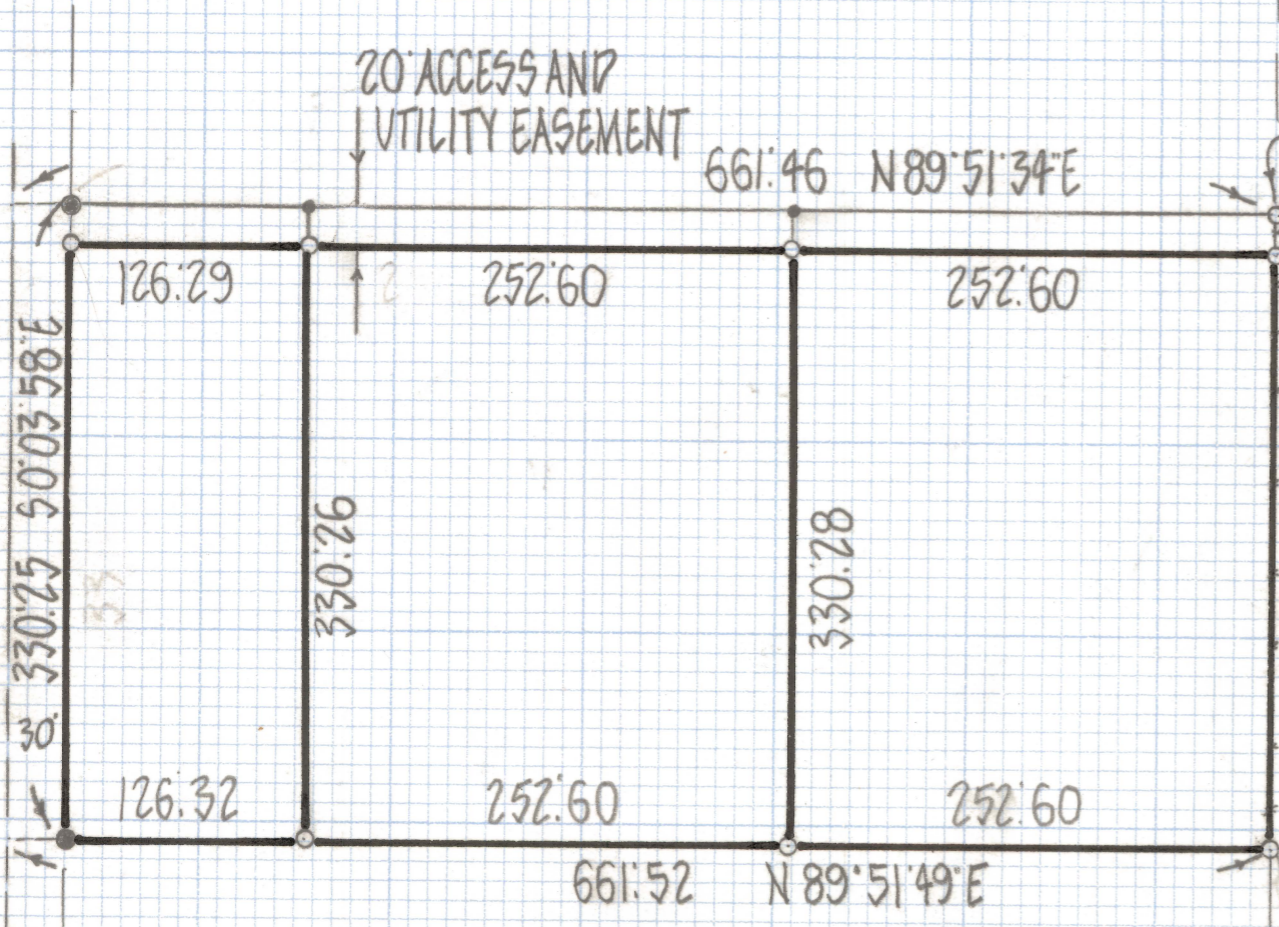


DISCLAIMER:

This unrecorded Record of Survey was donated to the City of Tucson. The City of Tucson provides this data for your personal use "as is." Additionally, the City of Tucson provides this information with the understanding that it is not guaranteed to be accurate, correct or complete and conclusions drawn from such information are the responsibility of the user.

DRAPER ROAD EXT.



RESULTS OF SURVEY

OF A PORTION OF THE SOUTHEAST QUARTER OF THE NORTHWEST QUARTER OF SECTION THIRTY-THREE, TOWNSHIP FOURTEEN SOUTH, RANGE TWELVE EAST, GILA AND SALT RIVER BASE AND MERIDIAN PIMA COUNTY ARIZONA.

NOTES

- (1) ♀ INDICATES SET 1/2" PIN MKD L.S. 4680 UNLESS NOTED
- (2) ● INDICATES FOUND 5/8" PIN MKD L.S. 4680 FROM JOB# 78-59
- (3) † INDICATES SET NAIL

ROBERT F. MELLEN
 REGISTERED LAND SURVEYOR
 TUCSON, ARIZONA
 JOB# 81-31