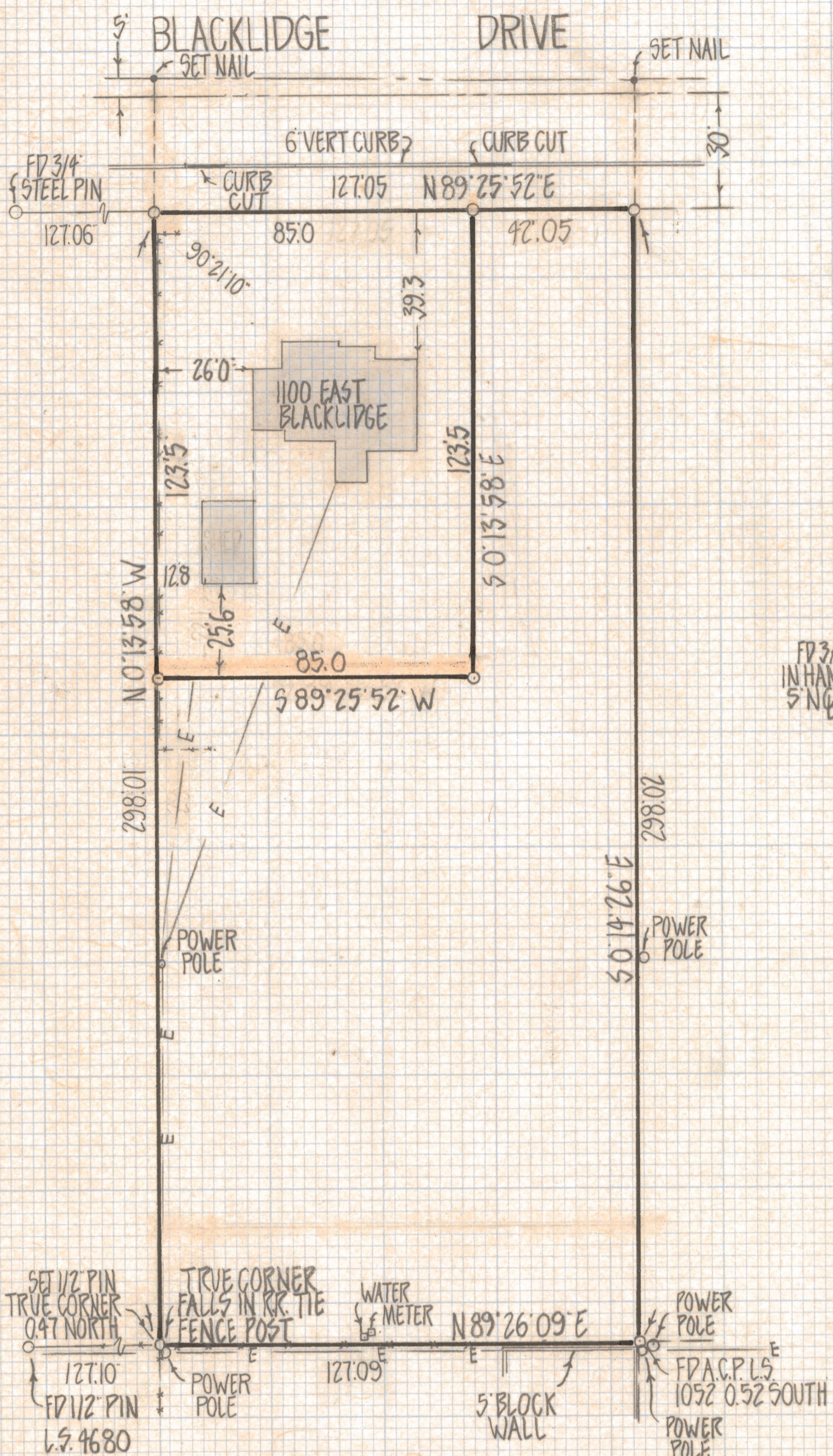
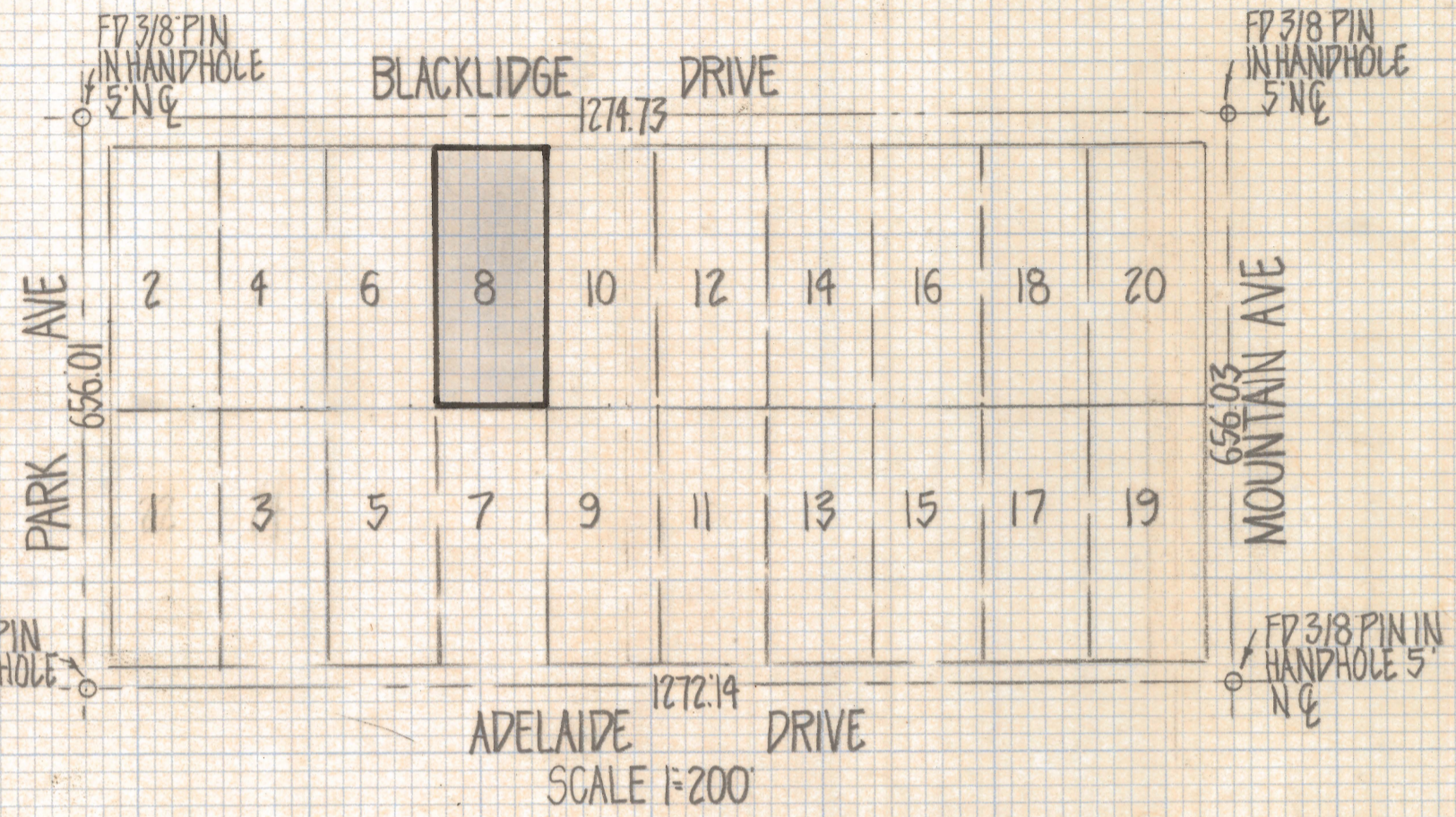


DISCLAIMER:

This unrecorded Record of Survey was donated to the City of Tucson. The City of Tucson provides this data for your personal use "as is." Additionally, the City of Tucson provides this information with the understanding that it is not guaranteed to be accurate, correct or complete and conclusions drawn from such information are the responsibility of the user.



SCALE 1"=30'



SCALE 1"=200'

RESULTS OF SURVEY

OF LOT 8 CATALINA POULTRY ACRES No 2 RECORDED IN BOOK 6 OF MAPS AND PLATS AT PAGE 13 IN THE OFFICE OF THE PIMA COUNTY RECORDER PIMA COUNTY ARIZONA

NOTES

- (1) ♀ INDICATES SET 1/2" PIN MKD L.S. 4680 UNLESS NOTED
- (2) SEE JOB # 80-19
- (3) BASIS OF BEARINGS N 0° 13' 58" W FOR PARK AVE AS SHOWN ON CATALINA POULTRY ACRES #2



ROBERT F. MELLEN
REGISTERED LAND SURVEYOR
TUCSON ARIZONA
JOB # 81-32