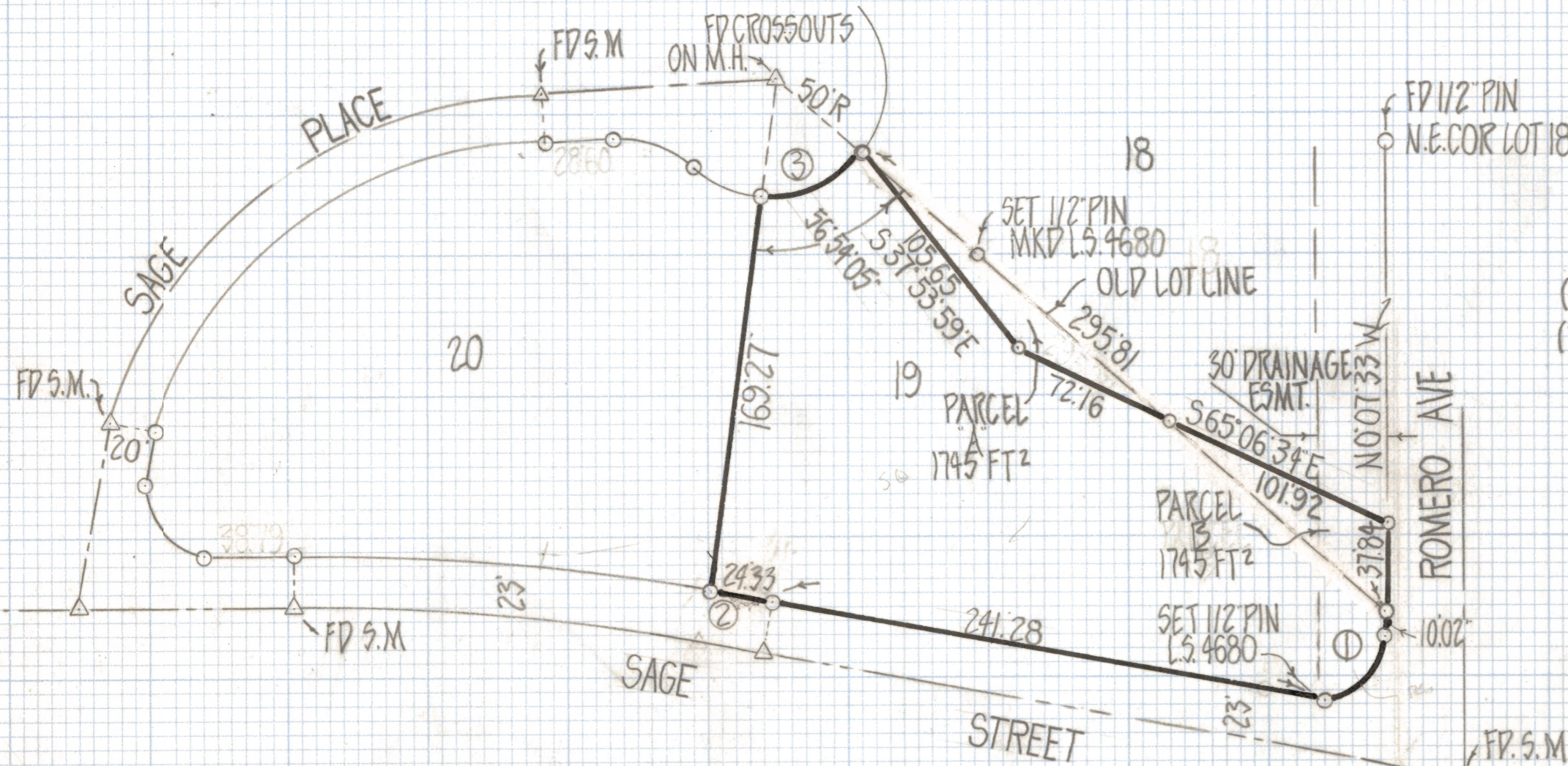


DISCLAIMER:

This unrecorded Record of Survey was donated to the City of Tucson. The City of Tucson provides this data for your personal use "as is." Additionally, the City of Tucson provides this information with the understanding that it is not guaranteed to be accurate, correct or complete and conclusions drawn from such information are the responsibility of the user.

RESULTS OF SURVEY

OF LOT 19 OF LA ESTANCIA RECORDED IN BOOK 30 OF MAPS AND PLATS AT PAGE 14 IN THE OFFICE OF THE PIMA COUNTY RECORDER PIMA COUNTY ARIZONA



NOTES

- (1) ○ INDICATES FOUND 1/2" PIN MKD L.S. 10171 UNLESS NOTED
- (2) S.M. INDICATES 2" BRASS PLUG IN CONCRETE MKD L.S. 10171

CURVE TABLE				
Nº	RADIUS	DELTA	TANGENT	LENGTH
1	25.0	100°00'00"	29.79	43.63
2	1023.00	1°21'46"	12.17	24.33
3	50.0	56°54'04"	27.09	49.66



ROBERT F. MELLEN
 REGISTERED LAND SURVEYOR
 TUCSON, ARIZONA
 JOB # 81-34

Z-2020-244