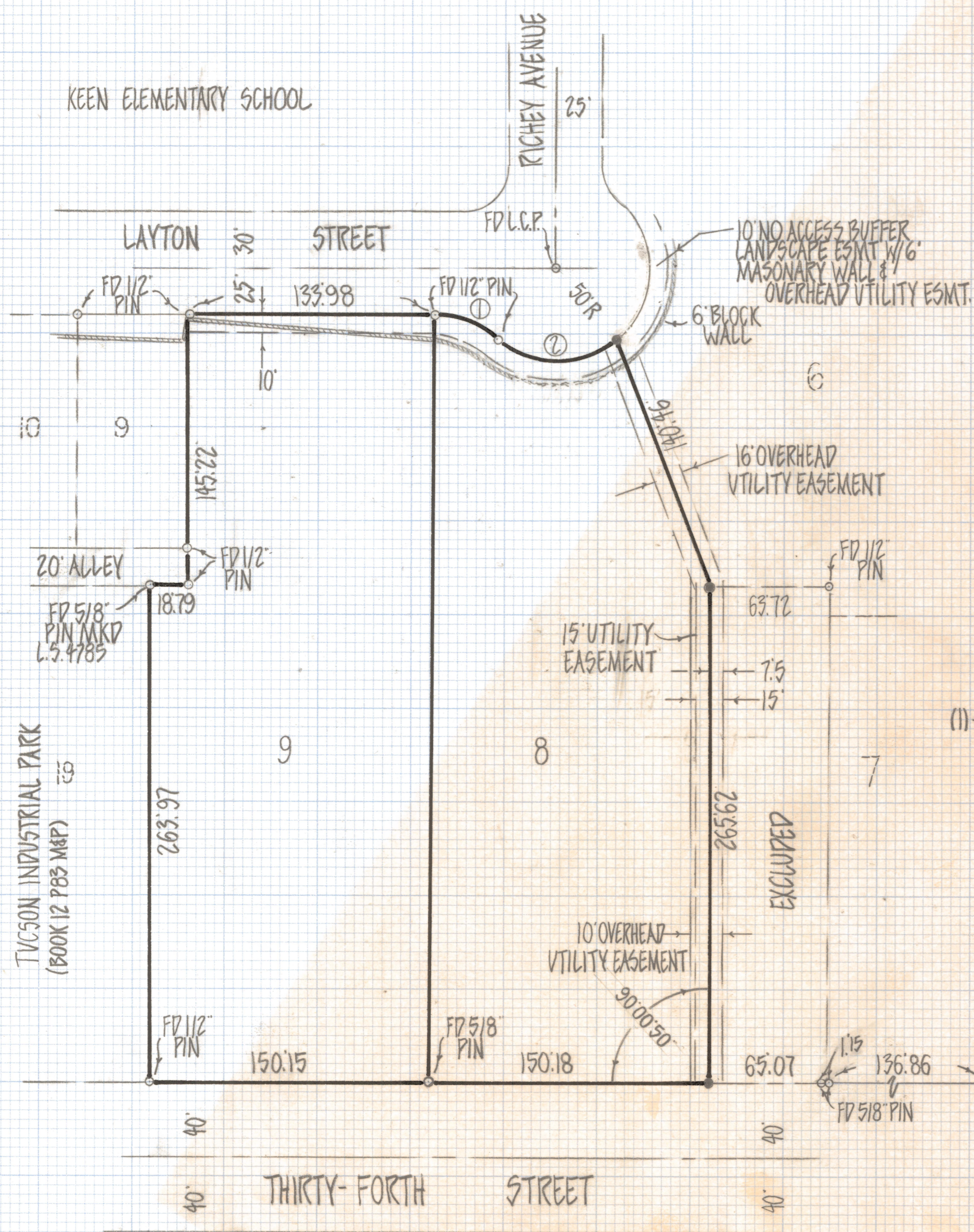
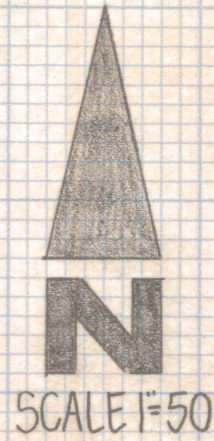


DISCLAIMER:

This unrecorded Record of Survey was donated to the City of Tucson. The City of Tucson provides this data for your personal use "as is." Additionally, the City of Tucson provides this information with the understanding that it is not guaranteed to be accurate, correct or complete and conclusions drawn from such information are the responsibility of the user.



RESULTS OF SURVEY

OF LOTS 8 AND 9 OF FRIEBUS INDUSTRIAL PARK RECORDED IN BOOK 29 OF MAPS AND PLATS AT PAGE 84 IN THE OFFICE OF THE PIMA COUNTY RECORDER PIMA COUNTY ARIZONA

NOTES

(1) • INDICATES SET 1/2" PIN MKD L.S. 4680 UNLESS NOTED

CURVE TABLE				
Nº	RADIUS	DELTA	TANGENT	LENGTH
1	50.0	41°27'07"	18.92	36.17
2	50.0	79°49'28"	41.82	69.66



ROBERT F. MELLEN
REGISTERED LAND SURVEYOR
TUCSON, ARIZONA
JOB #81-38