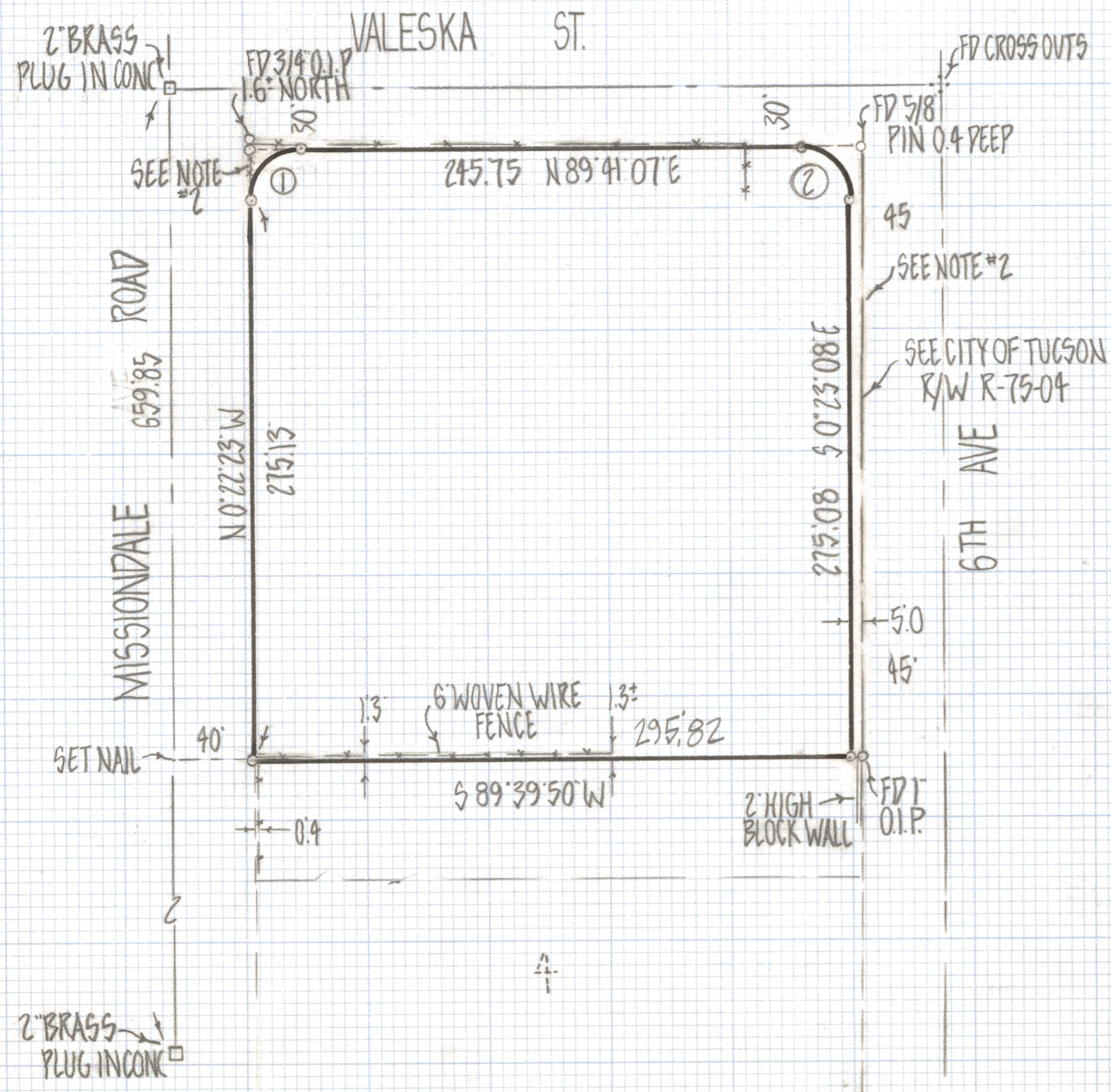
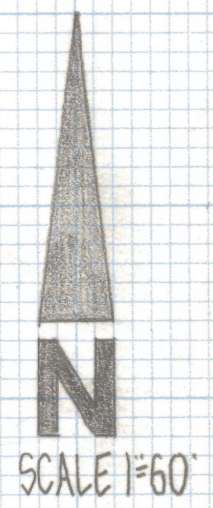


DISCLAIMER:

This unrecorded Record of Survey was donated to the City of Tucson. The City of Tucson provides this data for your personal use "as is." Additionally, the City of Tucson provides this information with the understanding that it is not guaranteed to be accurate, correct or complete and conclusions drawn from such information are the responsibility of the user.

CURVE TABLE				
№	RADIUS	DELTA	TANGENT	LENGTH
1	25.0	90°03'30"	25.03	39.29
2	25.0	89°55'45"	24.97	39.24



RESULTS OF SURVEY

OF LOTS 1 AND 2 AND THE NORTH HALF OF LOT 3 BLOCK 7 MISSIONDALE SUBDIVISION RECORDED IN BOOK 4 OF MAPS AND PLATS AT PAGE 41 IN THE OFFICE OF THE PIMA COUNTY RECORDER PIMA COUNTY ARIZONA

NOTES

- 1) ♀ INDICATES SET 1/2" PIN MKD L.S. 4680 UNLESS NOTED
- 2) THESE PARCELS WERE DEDICATED TO THE CITY OF TUCSON BY MOUNTAIN BELL PER DOC 3622 PAGE 237
- 3) THE SURVEY MONUMENTS IN MISSIONDALE ROAD WERE PLACED IN 1961-1962 UNDER PLAN I-827, THESE MONUMENTS FAIL TO AGREE WITH CERTAIN OCCUPATION IN MISSIONDALE SUBDIVISION THIS SURVEY IS BASED ON THE MOST CONSERVATIVE ANALYSIS OF CONFLICTING MONUMENTS AND OCCUPATION



ROBERT F. MELLEN
 REGISTERED LAND SURVEYOR
 TUCSON, ARIZONA
 JOB # 81-59