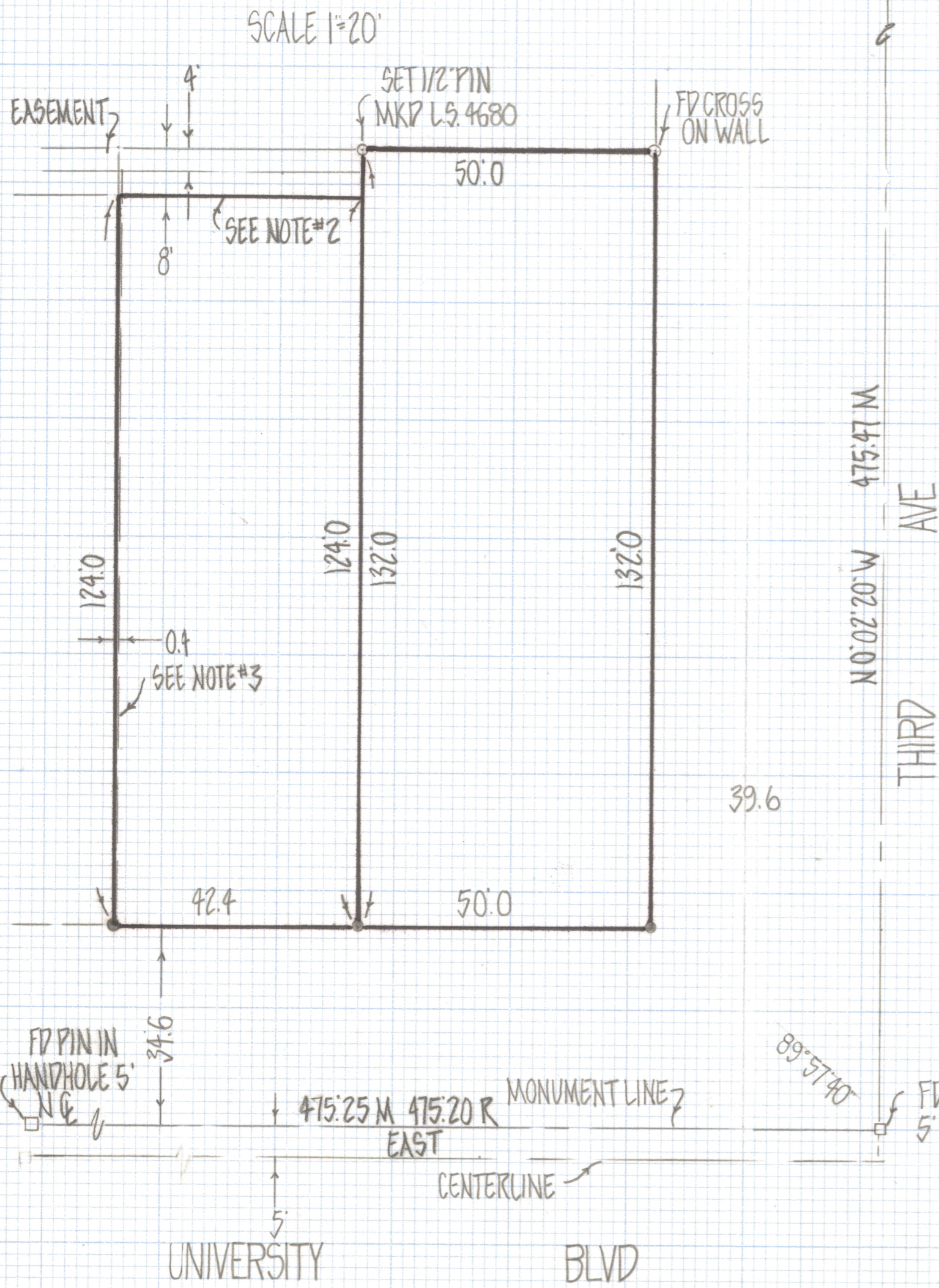
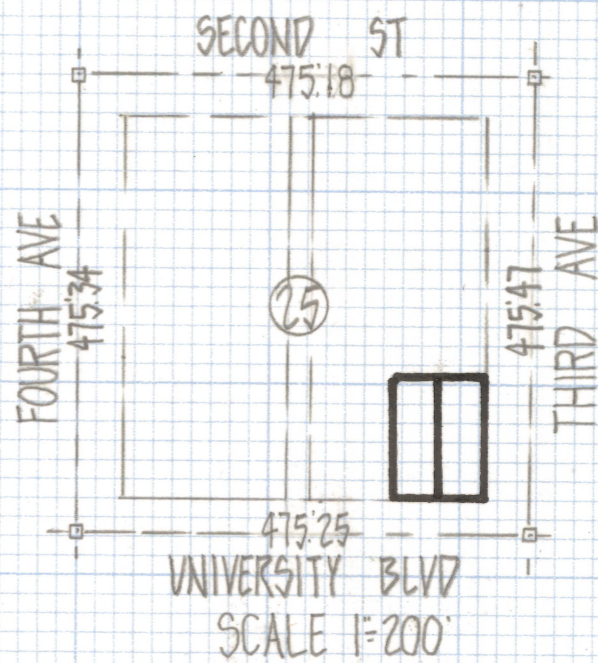


DISCLAIMER:

This unrecorded Record of Survey was donated to the City of Tucson. The City of Tucson provides this data for your personal use "as is." Additionally, the City of Tucson provides this information with the understanding that it is not guaranteed to be accurate, correct or complete and conclusions drawn from such information are the responsibility of the user.

INDICATES SET TAG MKP L.S. 4680 IN CONC UNLESS NOTED



RESULTS OF SURVEY

OF A PORTION OF BLOCK 25 CITY OF TUCSON RECORDED IN BOOK 3 OF MAPS AND PLATS AT PAGE 70 IN THE OFFICE OF THE PIMA COUNTY RECORDER PIMA COUNTY ARIZONA

NOTES

- (1) INDICATES SET TAG MKP L.S. 4680 IN CONC UNLESS NOTED
- (2) THIS TWO 4' STRIPS NOT INCLUDED IN CURRENT DEED DESCRIPTION OF PARCELS 46 AND 49 BUT ARE ASSESSED WITH THEM DUE TO THEIR CONVEYANCE TO SAID PARCELS AT MISC. RECORDS BOOK 48 PAGE 374 6/13/32
- (3) 0.4 WIDE STRIP NOT INCLUDED IN DEEDS BUT ASSESSED WITH PARCEL 49 DUE TO INCLUSION IN DESCRIPTION AT MISC RECORDS BOOK 48 PAGE 374
- (4) INDICATES PIN IN HANDHOLE FOUND
- (5) PARCEL NOT ASSESSED. LAST KNOWN TO BE OWNED BY WOLFE GOLDRING (PER D.R.E. BOOK 66 PAGE 400 10-29-19) WHO OWNED ALL LOTS 8, 9, AND 12 AND IN THE PROCESS OF SPLITTING UP THESE THREE LOTS NEVER CONVEYED THIS PARCEL TO ANYONE ELSE AND IN FACT SPECIFICALLY RETAINED THE PORTION OF IT IN LOT 9 AT MISC RECORDS BOOK 48 PAGE 374



ROBERT F. MELLEN
REGISTERED LAND SURVEYOR
TUCSON, ARIZONA
JOB # 81-60