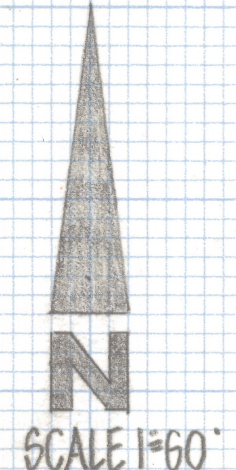
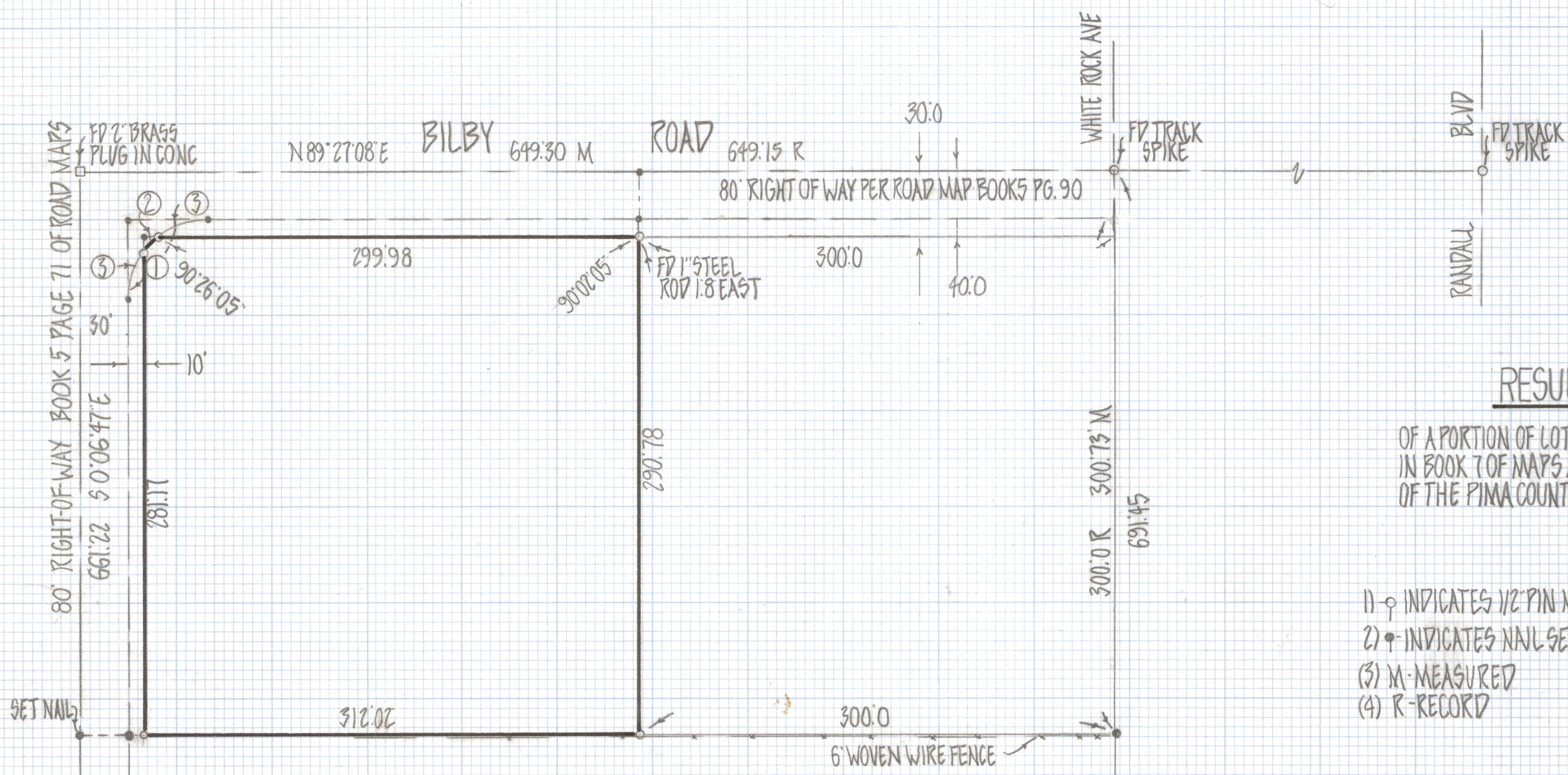


DISCLAIMER:

This unrecorded Record of Survey was donated to the City of Tucson. The City of Tucson provides this data for your personal use "as is." Additionally, the City of Tucson provides this information with the understanding that it is not guaranteed to be accurate, correct or complete and conclusions drawn from such information are the responsibility of the user.



RESULTS OF SURVEY

OF A PORTION OF LOT 183 LOS RANCHITOS No 5 RECORDED IN BOOK 7 OF MAPS AND PLATS AT PAGE 96 IN THE OFFICE OF THE PIMA COUNTY RECORDER PIMA COUNTY ARIZONA

NOTES

- 1) ♀ INDICATES 1/2" PIN MKD L.S. 4680 SET UNLESS NOTED
- 2) ♀ INDICATES NAIL SET
- (3) M-MEASURED
- (4) R-RECORD

CURVE DATA					
No	RADIUS	DELTA	TANGENT	LENGTH	CHORD
1	50.0	89°33'55"	49.62	78.16	70.44
2	50.0	15°51'51"	6.97	13.84	13.8
3	50.0	36°51'10"	16.66	32.16	31.61



ROBERT F. MELLEN
 REGISTERED LAND SURVEYOR
 TUCSON, ARIZONA
 JOB# 81-61