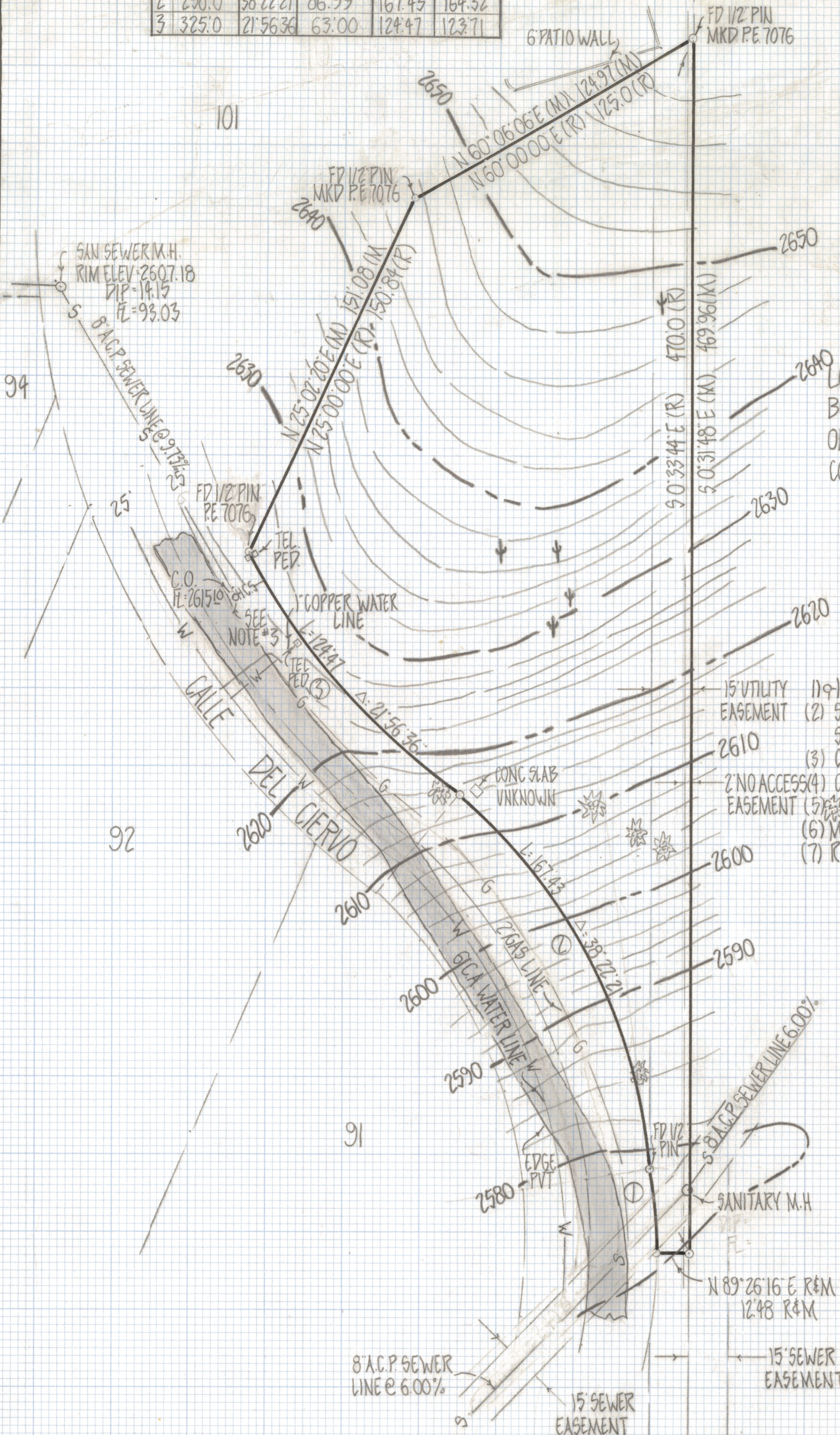
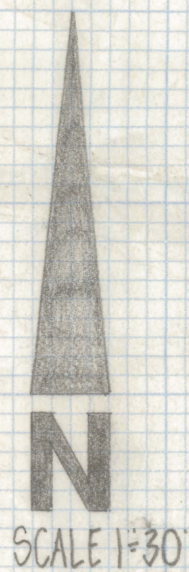


DISCLAIMER:

This unrecorded Record of Survey was donated to the City of Tucson. The City of Tucson provides this data for your personal use "as is." Additionally, the City of Tucson provides this information with the understanding that it is not guaranteed to be accurate, correct or complete and conclusions drawn from such information are the responsibility of the user.

CURVE TABLE				
Nº	RADIUS	DELTA	TANGENT	CHORD
1	175.0	10°45'05"	16.47	32.84
2	250.0	38°22'21"	86.99	167.43
3	325.0	21°56'36"	63.00	123.71



TOPOGRAPHICAL SURVEY
OF

LOT 100 LA BUENA VIDA ESTATES RECORDED IN BOOK 25 OF MAPS AND PLATS AT PAGE 26 IN THE OFFICE OF THE PIMA COUNTY RECORDER PIMA COUNTY ARIZONA

NOTES

- 1) INDICATES SET 1/2" STEEL PIN MKD L.S. 4680 UNLESS NOTED
- 2) SEWER DATA PLAN Nº 348-3 SHEET 5 PIMA COUNTY ARIZONA
- 3) CLEAN OUT FROM PLAN Nº 348-3 SHEET 5 NOT VERIFIED
- 4) CONTOUR INTERVAL 2 FOOT
- 5) INDICATES PALO VERDE TREE
- 6) M - MEASURED
- 7) R - MAP RECORD



ROBERT F. MELLEN
REGISTERED LAND SURVEYOR
TUCSON, ARIZONA
JOB # 81-63