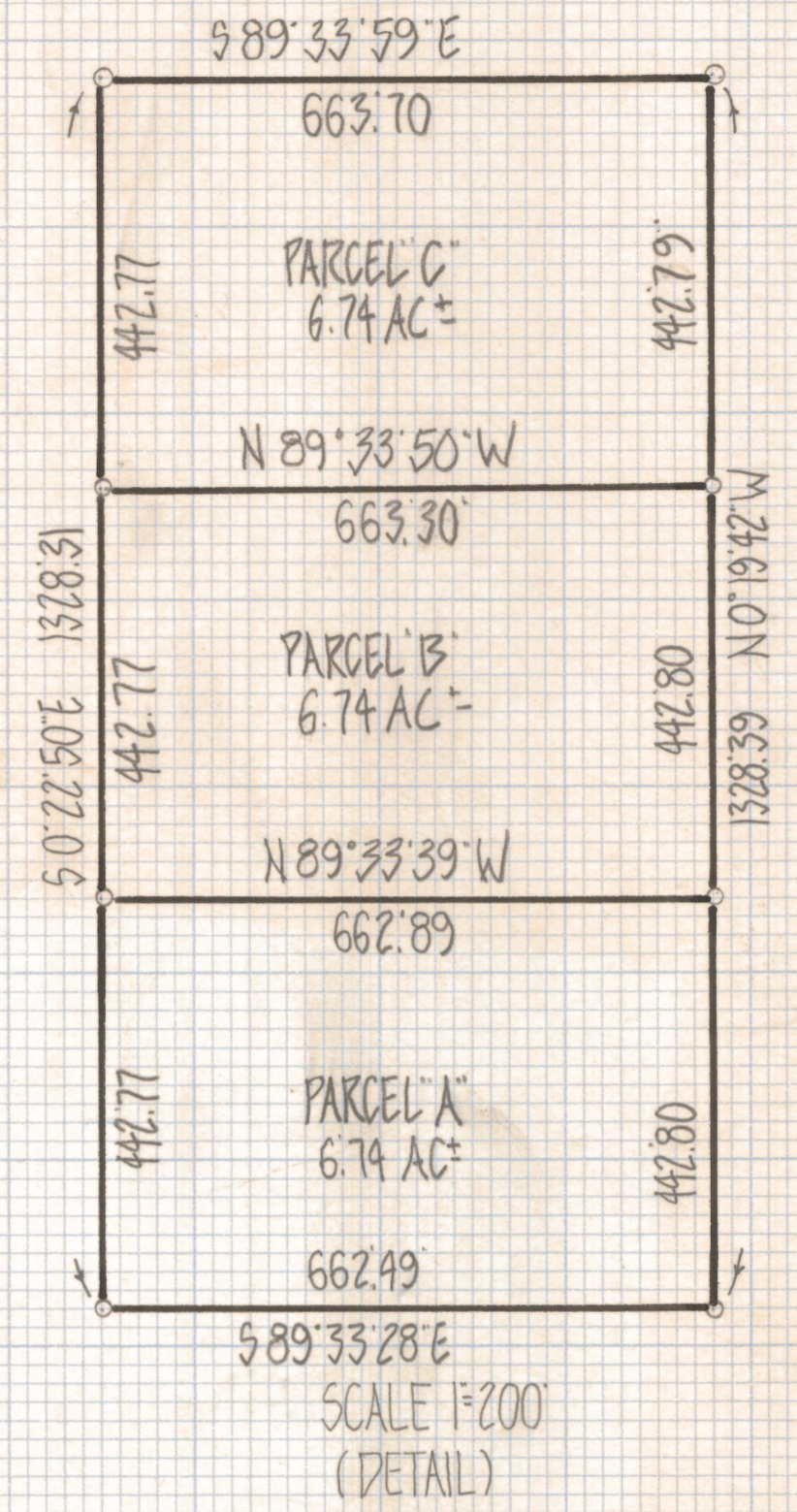
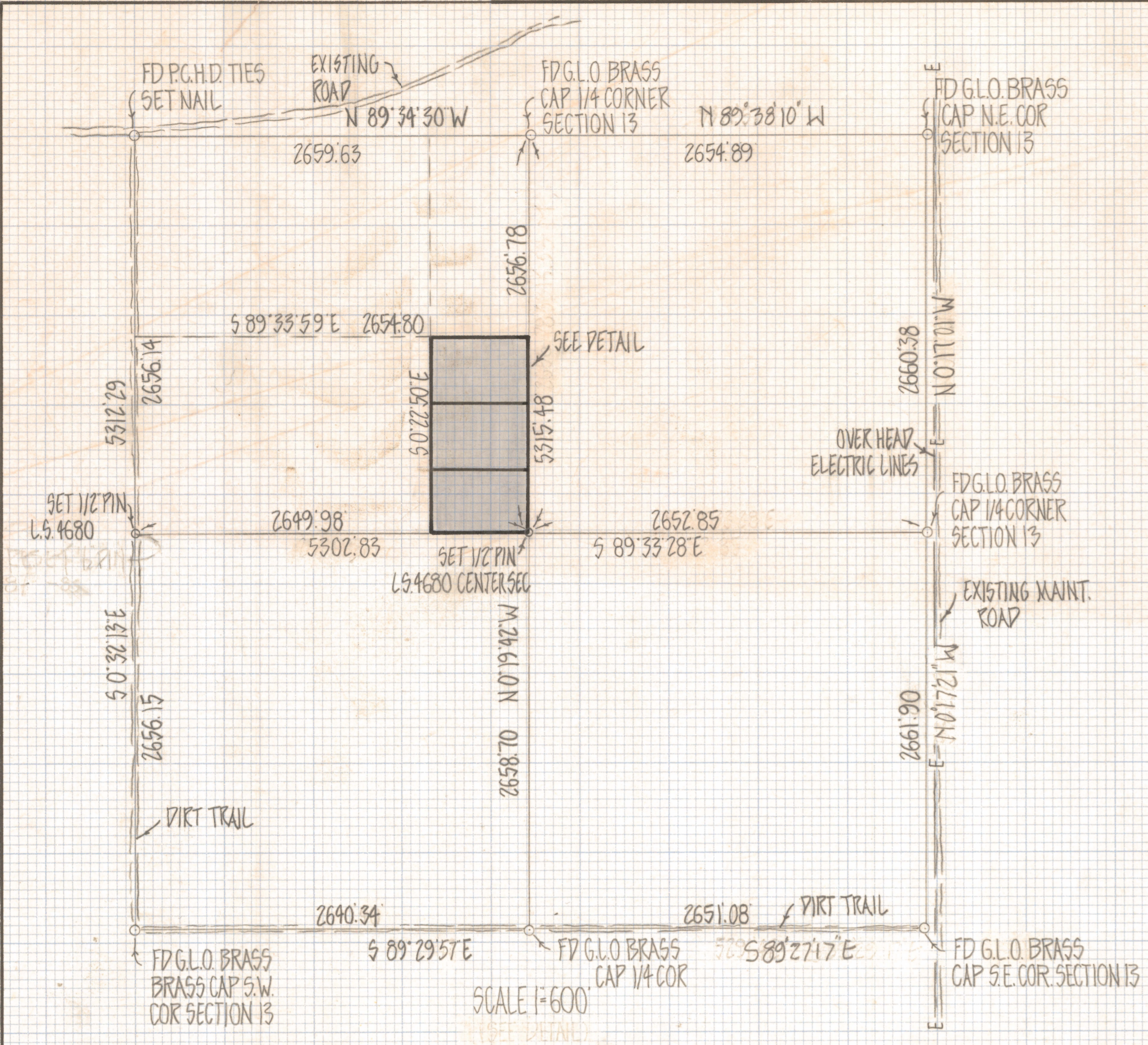


# **DISCLAIMER:**

**This unrecorded Record of Survey was donated to the City of Tucson. The City of Tucson provides this data for your personal use "as is." Additionally, the City of Tucson provides this information with the understanding that it is not guaranteed to be accurate, correct or complete and conclusions drawn from such information are the responsibility of the user.**



RESULTS OF SURVEY

OF THE EAST HALF OF THE SOUTHEAST QUARTER OF THE  
 NORTHWEST QUARTER SECTION 13 TOWNSHIP 17 SOUTH  
 RANGE 14 EAST GILA AND SALT RIVER BASE AND MERIDIAN  
 PINA COUNTY ARIZONA

NOTES

1) - indicates SET 1/2" PIN MKD L.S. 4680 UNLESS NOTED

REVISED 8-28-85 WEST 1/4 CORNER



ROBERT F. MELLEN  
 REGISTERED LAND SURVEYOR  
 TUCSON, ARIZONA  
 JOB# 81-66

Z-2020-268