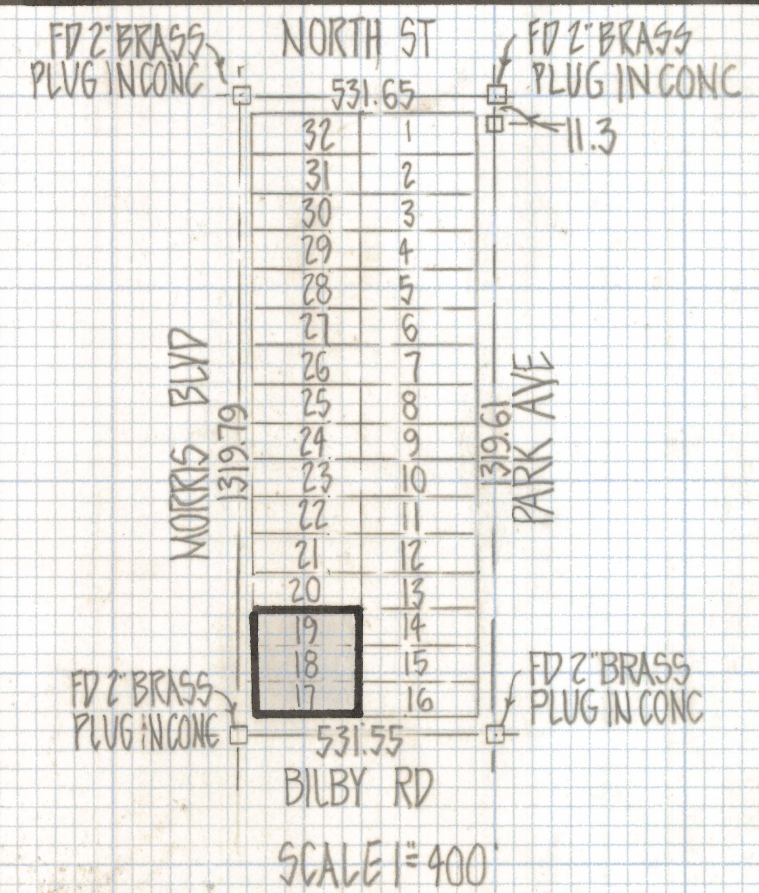
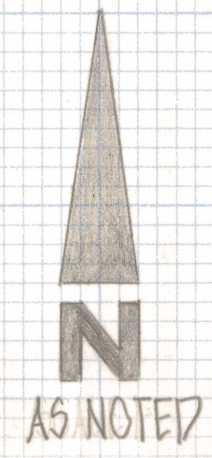
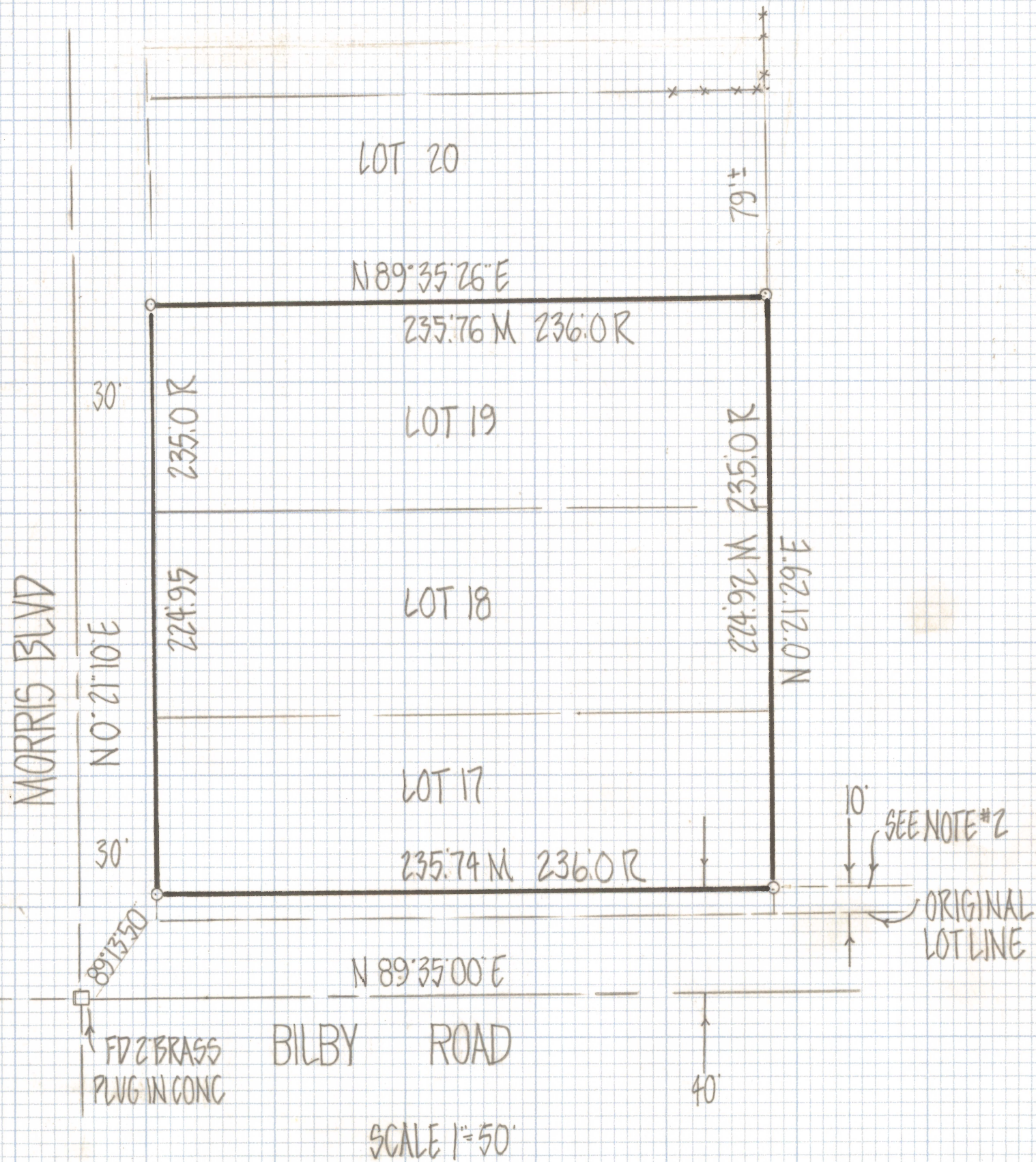


# **DISCLAIMER:**

**This unrecorded Record of Survey was donated to the City of Tucson. The City of Tucson provides this data for your personal use "as is." Additionally, the City of Tucson provides this information with the understanding that it is not guaranteed to be accurate, correct or complete and conclusions drawn from such information are the responsibility of the user.**



RESULTS OF SURVEY

OF LOTS 17, 18, AND 19 BLOCK 4 SOUTHLAND PARK AS RECORDED IN BOOK 5 OF MAPS AND PLATS AT PAGE 58 IN THE OFFICE OF THE PIMA COUNTY RECORDER PIMA COUNTY ARIZONA

NOTES

- 1) ♀ INDICATES SET 1/2" PIN MKD L.S. 4680 UNLESS NOTED
- 2) THE SOUTH 10' FEET OF LOT 17 WAS ACQUIRED FOR BILBY ROAD SEE ROAD MAP BOOK 5 PAGE 90
- 3) R=RECORD
- 4) M=MEASURED



ROBERT F. MELLEN  
 REGISTERED LAND SURVEYOR  
 TUCSON, ARIZONA  
 JOB # 81-67