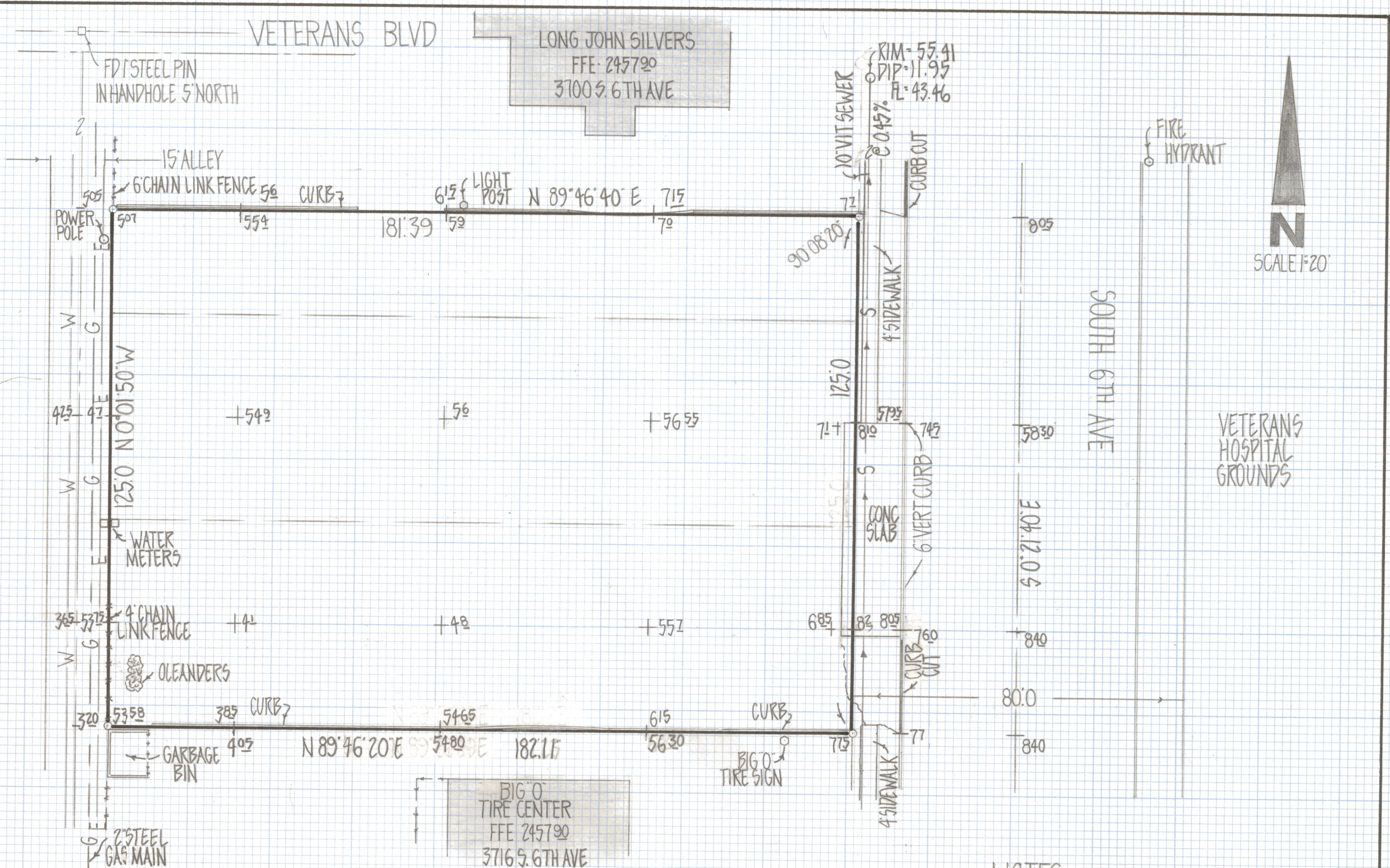


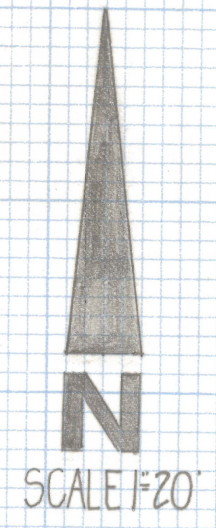
# **DISCLAIMER:**

**This unrecorded Record of Survey was donated to the City of Tucson. The City of Tucson provides this data for your personal use "as is." Additionally, the City of Tucson provides this information with the understanding that it is not guaranteed to be accurate, correct or complete and conclusions drawn from such information are the responsibility of the user.**



VETERANS BLVD

LONG JOHN SILVERS  
FFE 245720  
3700 S. 6TH AVE



RESULTS OF SURVEY

OF THE SOUTH HALF OF LOT 13 AND ALL OF LOTS 14 AND 15 BLOCK 2 OF VETERANS ADDITION SUBDIVISION AS RECORDED IN BOOK 5 OF MAPS AND PLATS AT PAGE 66 IN THE OFFICE OF THE PIMA COUNTY RECORDER, PIMA COUNTY, ARIZONA

NOTES

- 1) ♀ INDICATES 1/2" STEEL PIN MARKED LS. 4680 SET UNLESS NOTED
- 2) BASIS OF BEARINGS - ARIZONA HIGHWAY DEPT. RIGHT OF WAY MAP SHOWING ATO ROAD AS N 89°44'20"E
- 3) CAUTION UNDERGROUND UTILITIES IN AREA CALL BLUE STAKES BEFORE DIGGING 792-2211
- 4) SEWER FROM PLAN G-107 CITY OF TUCSON SHEET 1 OF 5 ADD 9.89 FOR ARIZONA HIGHWAY DEPT. DATUM
- 5) BENCH MARK 3" BRASS PLUG IN HEADWALL STATION 88+97.3 B.M. ELEV 2458.44 ARIZ HIGHWAY DEPT DATUM FED AID PROJECT #291935 SHEET 7 OF 14
- 6) SEE JOBS 79-1 AND 79-53
- 7) SEE LETTER ON BLOCK SHORTAGE JOB #79-1



ROBERT F. MELLEN  
REGISTERED LAND SURVEYOR  
TUCSON, ARIZONA  
JOB #81-69