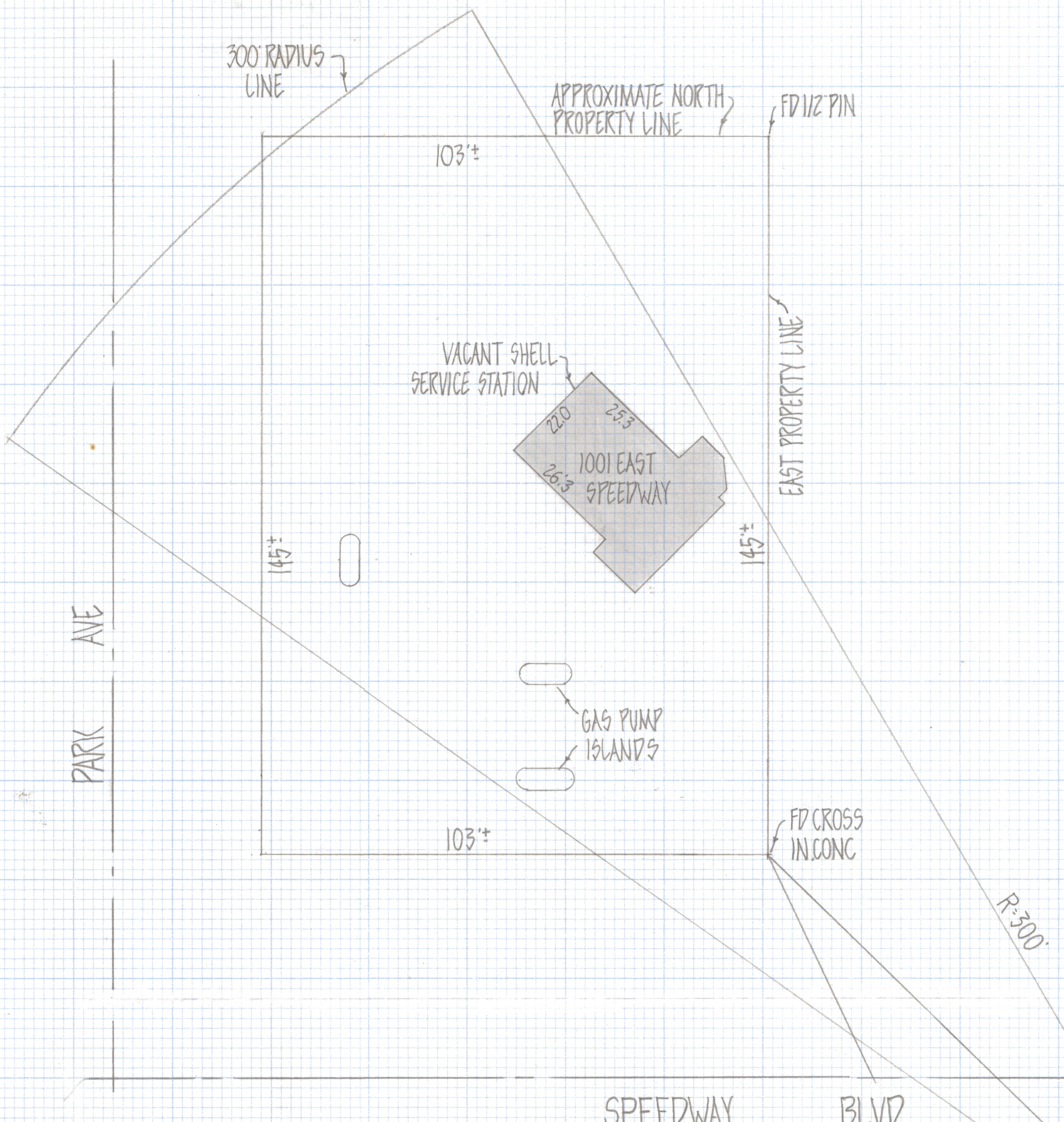
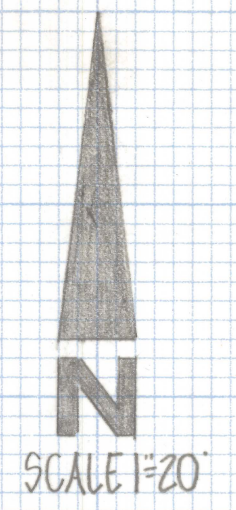


# **DISCLAIMER:**

**This unrecorded Record of Survey was donated to the City of Tucson. The City of Tucson provides this data for your personal use "as is." Additionally, the City of Tucson provides this information with the understanding that it is not guaranteed to be accurate, correct or complete and conclusions drawn from such information are the responsibility of the user.**





MAP  
SHOWING RELATIONSHIP OF VACANT SHELL SERVICE STATION AT 1001 EAST SPEEDWAY TO FINE ARTS BUILDING UNIVERSITY OF ARIZONA CAMPUS

DATA GAMES  
1010 EAST  
SPEEDWAY

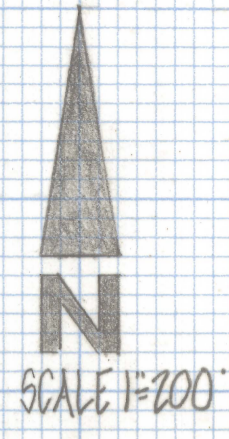
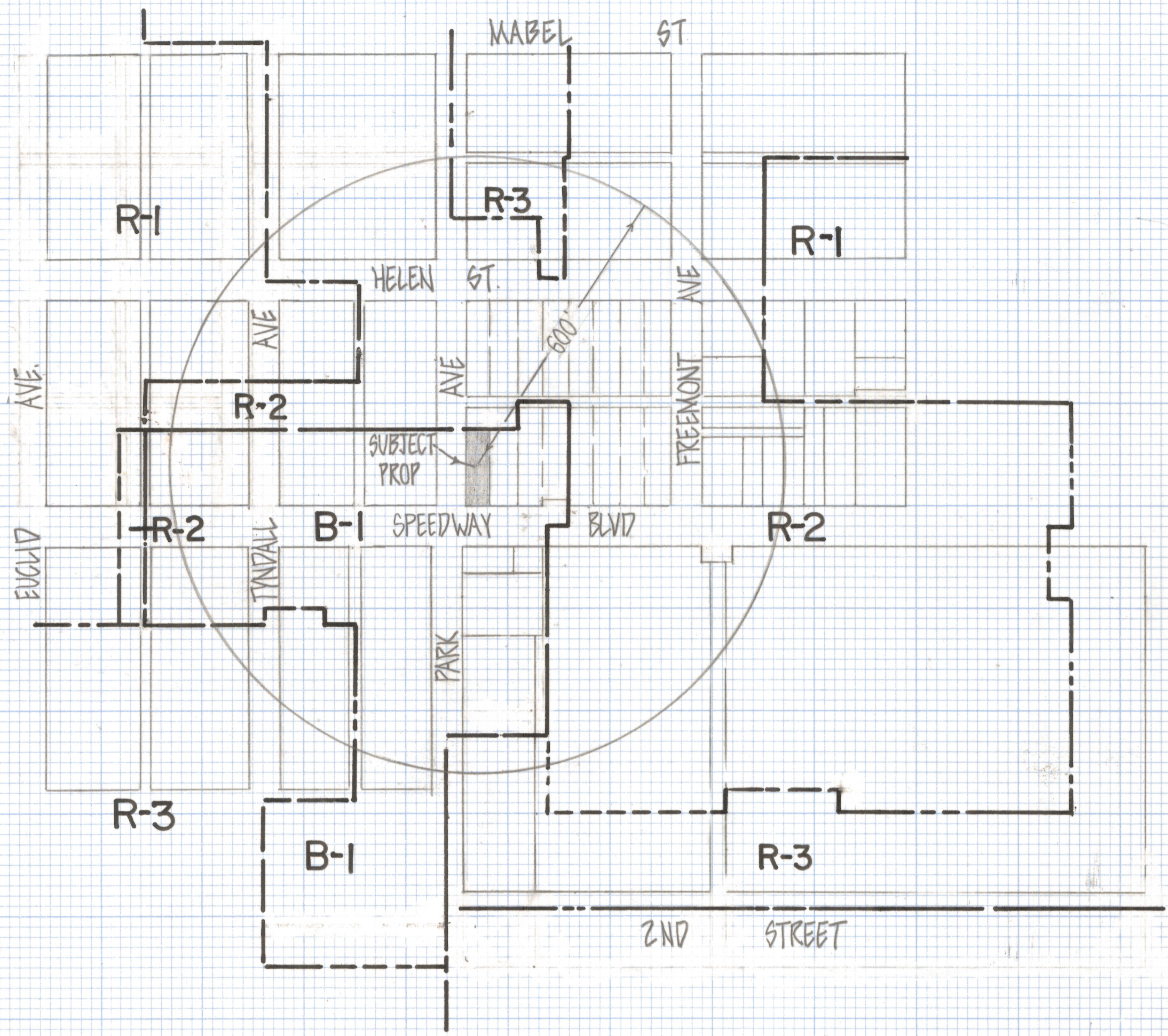
BRICK PATIO WALL  
UNIVERSITY OF ARIZONA

UNIVERSITY OF ARIZONA  
FINE ARTS BUILDING



ROBERT F. MELLEN  
REGISTERED LAND SURVEYOR  
TUCSON, ARIZONA  
JOB # 81-71





NOTES

DATA FROM BUILDING ZONE MAP  
ADOPTED BY MAYOR AND COUNCIL  
APRIL 12, 1954

- R-1
- R-2
- R-3
- B-1

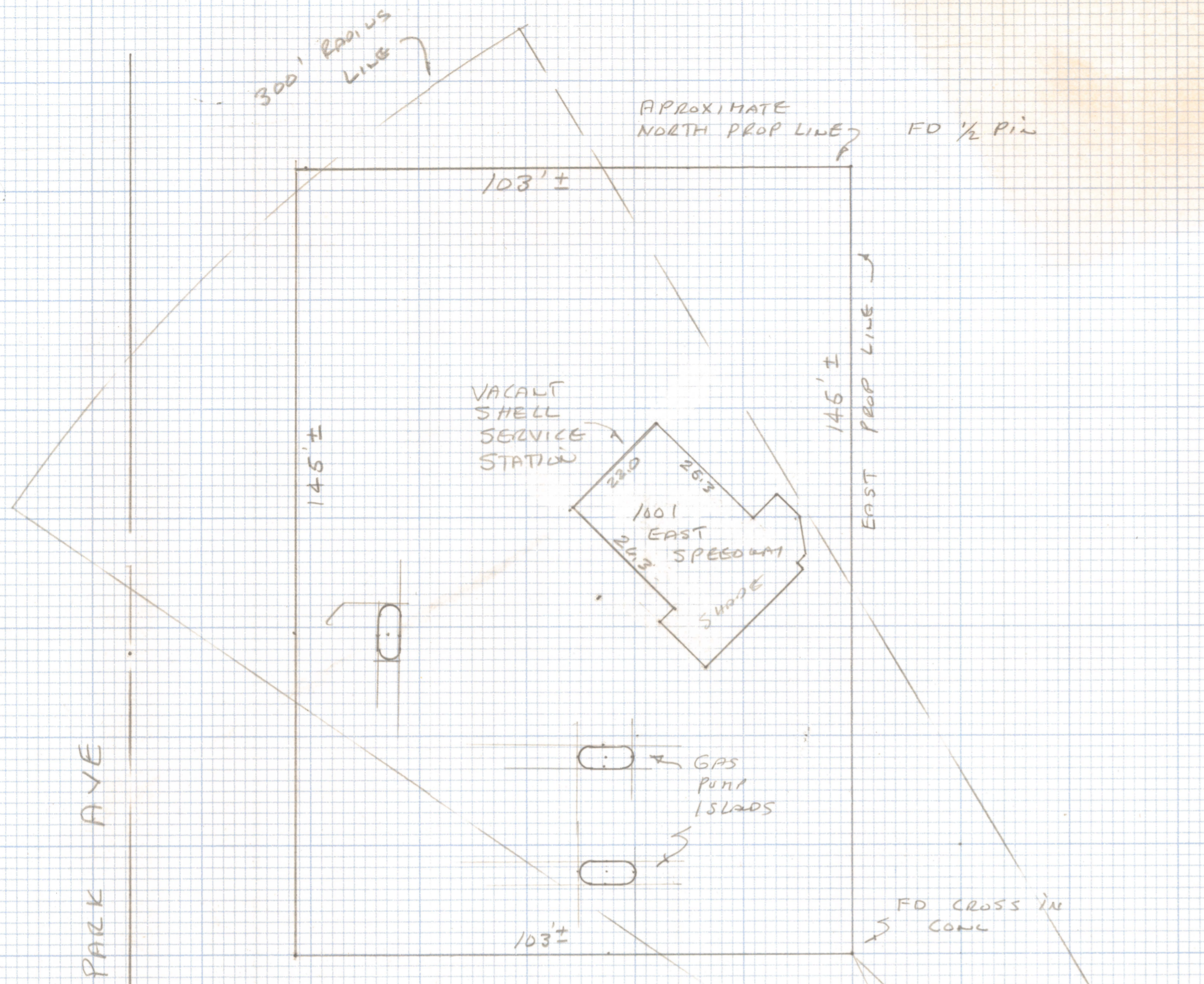
SKETCH  
OF

EXISTING ZONING IN AREA OF PARK AVE AND SPEEDWAY BLVD  
TUCSON, ARIZONA



ROBERT F. MELLEN  
REGISTERED LAND SURVEYOR  
TUCSON, ARIZONA  
JOB# 81-71





MAP  
 SHOWING RELATIONSHIP OF  
 VACANT SHELL SERVICE STATION  
 AT 1001 EAST SPEEDWAY TO  
 FINE ARTS BUILDING UNIVERSITY  
 OF ARIZONA CAMPUS



PARK AVE

SPEEDWAY

DATA  
 GATES  
 1010 E  
 SPEEDWAY

PATIO WALL  
 BRICK ~~ROOF~~  
 UNIVERSITY  
 OF ARIZONA

5' SHADE

UNIVERSITY OF ARIZONA  
 FINE ARTS BUILDING

ROBERT F. HELLEN  
 REGISTERED LAND  
 SURVEYOR  
 TULSA, ARIZONA  
 JDD # 81-71

Z-2020-273-003