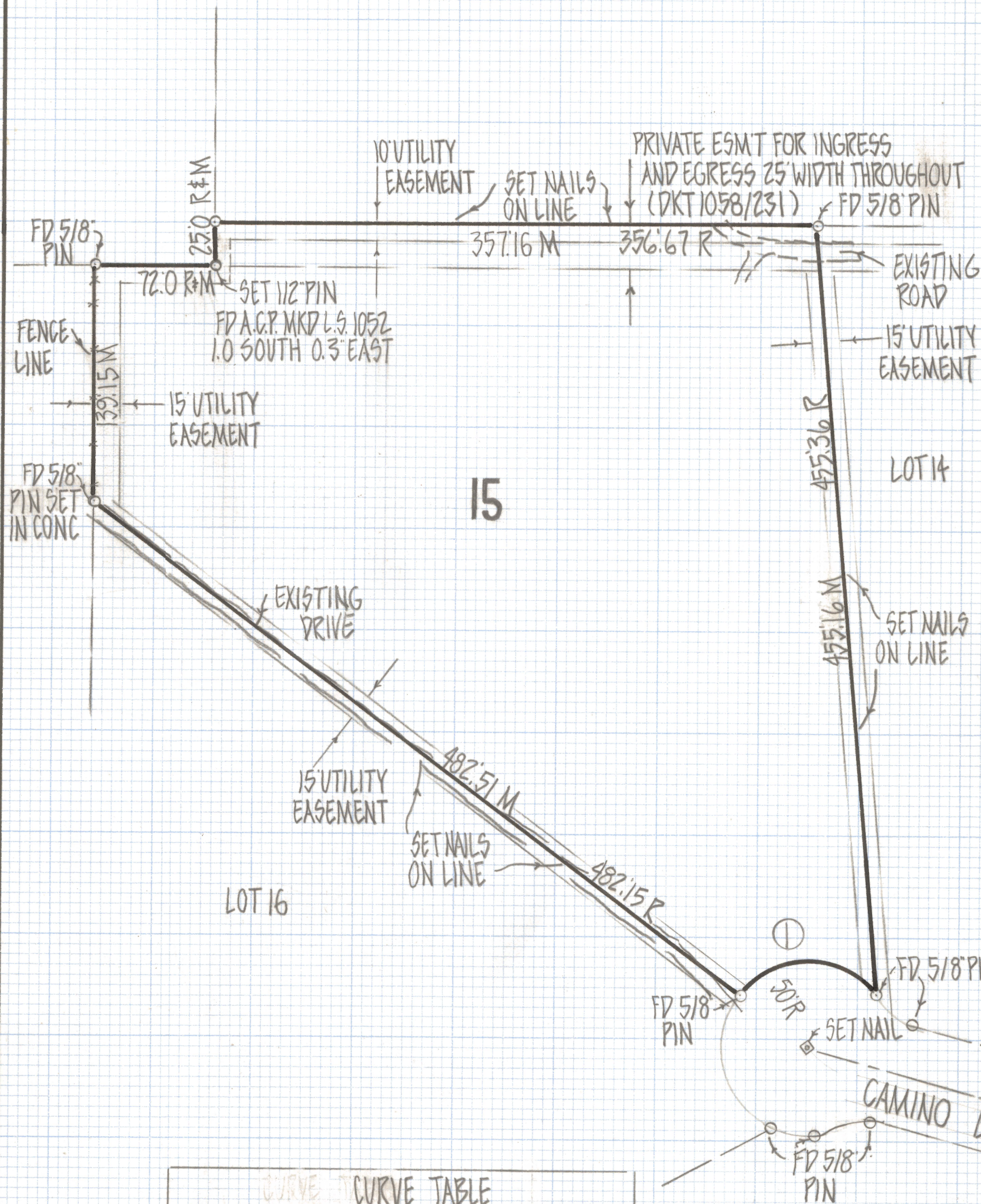
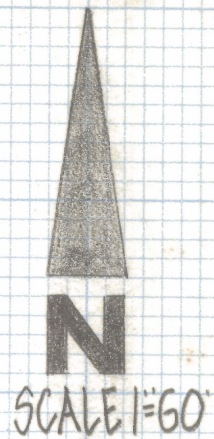


# **DISCLAIMER:**

**This unrecorded Record of Survey was donated to the City of Tucson. The City of Tucson provides this data for your personal use "as is." Additionally, the City of Tucson provides this information with the understanding that it is not guaranteed to be accurate, correct or complete and conclusions drawn from such information are the responsibility of the user.**





RESULTS OF SURVEY  
OF LOT 15 OF LOMAS DE ORO RECORDED IN BOOK 19 OF MAPS  
AND PLATS AT PAGE 11 IN THE OFFICE OF THE PINA COUNTY RECORDER  
PINA COUNTY ARIZONA

- NOTES
- 1) -  $\circ$  INDICATES SET 1/2 PIN MKD L.S. 4680 UNLESS NOTED
  - 2) M - MEASURED
  - 3) R - MAP RECORD

CURVE TABLE					
NO	RADIUS	DELTA	TANGENT	LENGTH	CHORD
1	50.0	104°53'45"	65.04	91.54	79.28



ROBERT F. MELLE  
REGISTERED LAND SURVEYOR  
TUCSON, ARIZONA  
JOB # 81-72

Z-2020-274

Z-2020-274