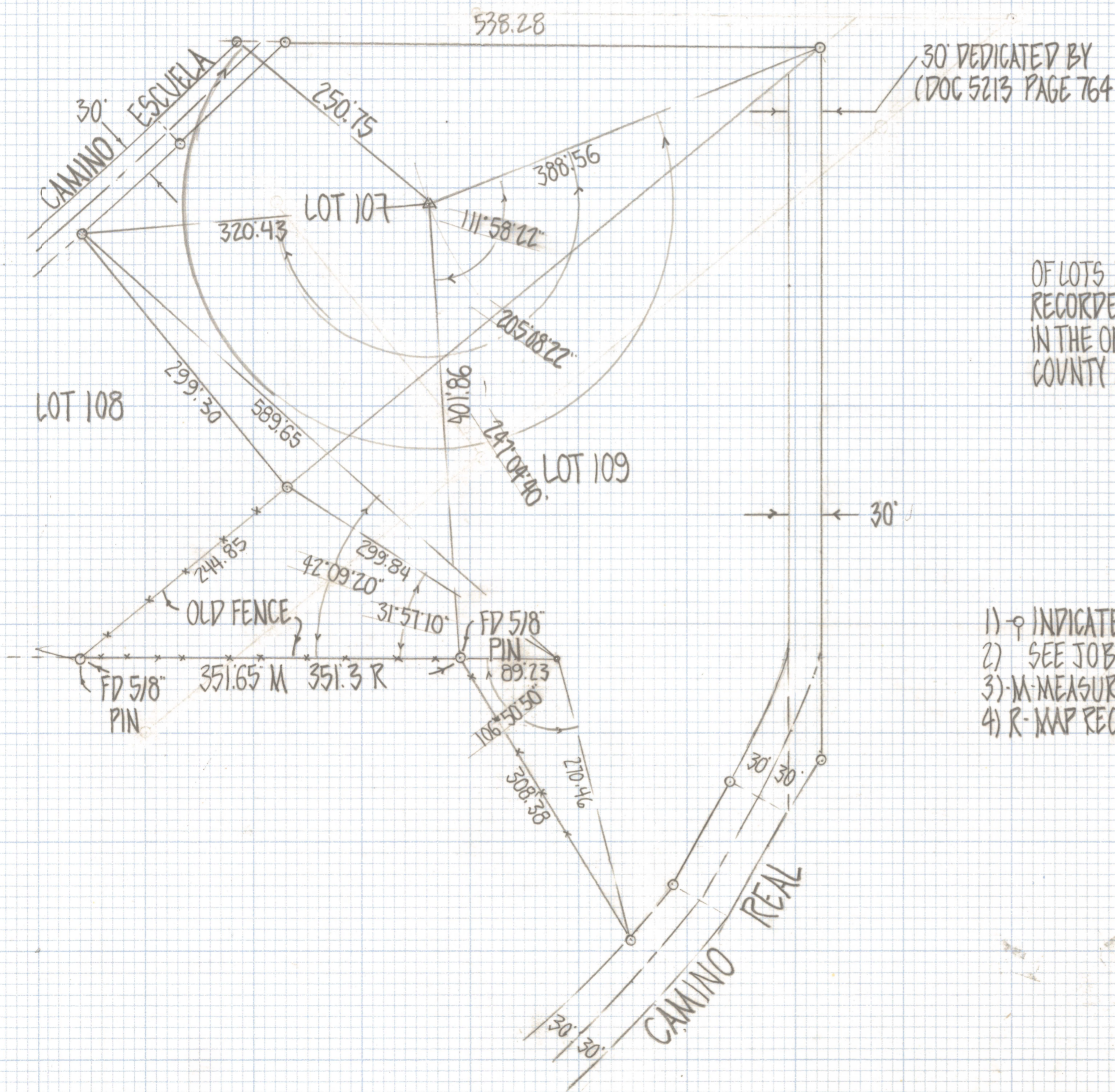
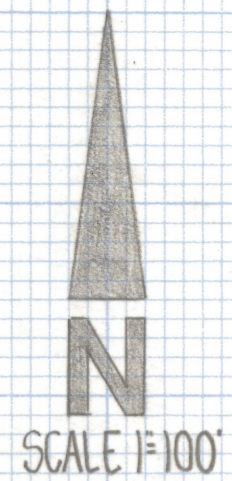


# **DISCLAIMER:**

**This unrecorded Record of Survey was donated to the City of Tucson. The City of Tucson provides this data for your personal use "as is." Additionally, the City of Tucson provides this information with the understanding that it is not guaranteed to be accurate, correct or complete and conclusions drawn from such information are the responsibility of the user.**



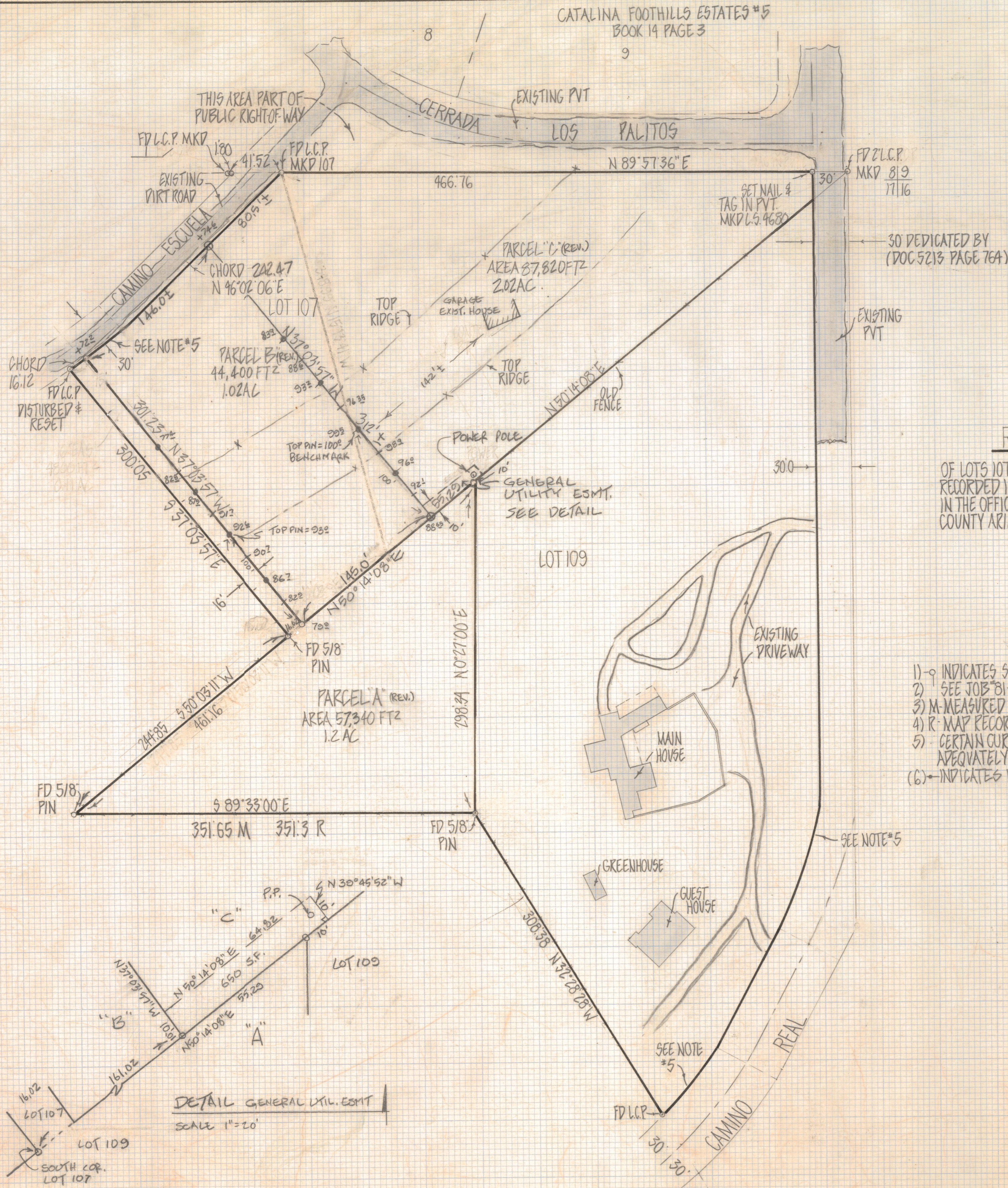
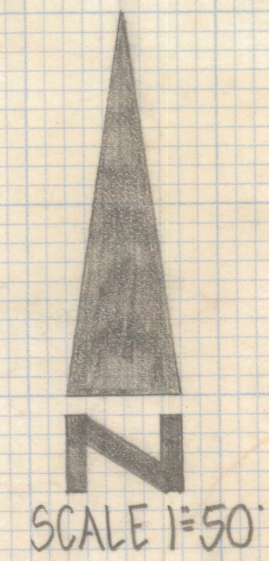
RESULTS OF SURVEY

OF LOTS 107 AND 109 OF CATALINA FOOTHILLS ESTATES  
 RECORDED IN BOOK 6 OF MAPS AND PLATS AT PAGE 57  
 IN THE OFFICE OF THE PINA COUNTY RECORDER PINA  
 COUNTY ARIZONA

NOTES

- 1) ♀ INDICATES SET 1/2" PIN MKD L.S. 4680 UNLESS NOTED
- 2) SEE JOB # 81-73
- 3) M- MEASURED
- 4) R- MAP RECORD

ROBERT F. MELLEN  
 REGISTERED LAND SURVEYOR  
 TUCSON, ARIZONA  
 JOB # 81-74



RESULTS OF SURVEY

OF LOTS 107 AND 109 OF CATALINA FOOTHILLS ESTATES RECORDED IN BOOK 6 OF MAPS AND PLATS AT PAGE 57 IN THE OFFICE OF THE PIMA COUNTY RECORDER PIMA COUNTY ARIZONA

NOTES

- 1) - indicates SET 1/2" PIN MKD L.S. 4680 UNLESS NOTED
- 2) - SEE JOB #81-73
- 3) M-MEASURED
- 4) R-MAP RECORD
- 5) CERTAIN CURVES IN THIS SUBDIVISION ARE NOT DEFINED ADEQUATELY AND WERE NOT SURVEYED
- 6) - INDICATES NAILS SET ON LINE

DETAIL GENERAL UTIL. ESMT  
SCALE 1"=20'



ROBERT F. MELLEN  
REGISTERED LAND SURVEYOR  
TUCSON, ARIZONA  
JOB # 81-74

REVISED PARCELA#C 3/13/82 on (± 10' ESMT)  
REVISED PARCELA#B 1/16/81