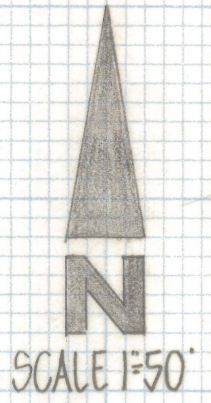
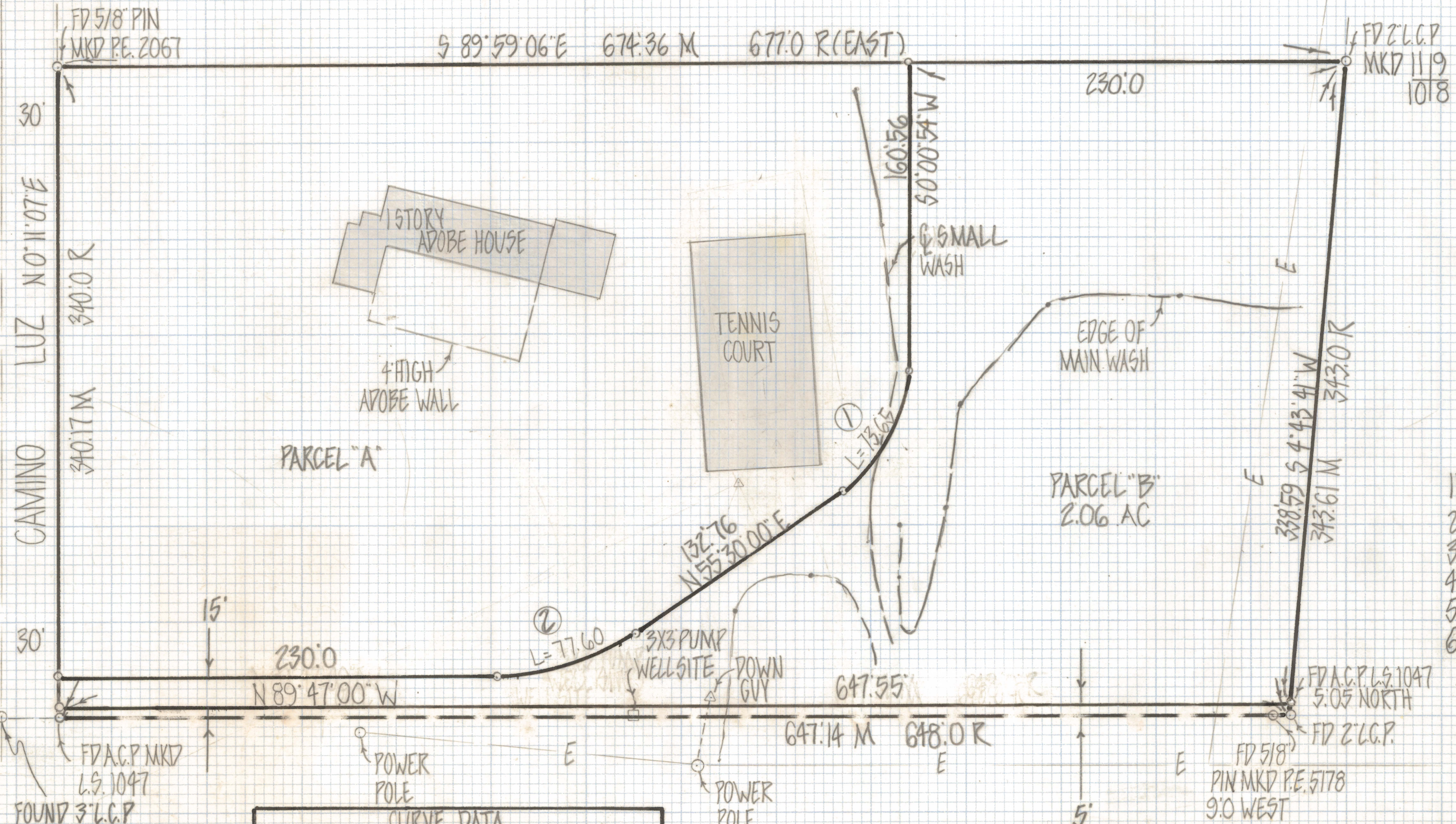


# **DISCLAIMER:**

**This unrecorded Record of Survey was donated to the City of Tucson. The City of Tucson provides this data for your personal use "as is." Additionally, the City of Tucson provides this information with the understanding that it is not guaranteed to be accurate, correct or complete and conclusions drawn from such information are the responsibility of the user.**





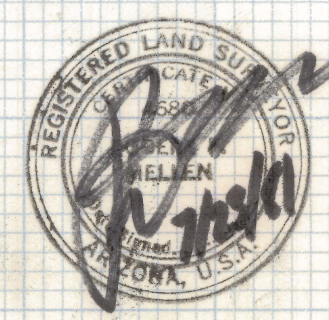
RESULTS OF SURVEY

OF LOT 10 OF CATALINA FOOTHILLS ESTATES RECORDED IN BOOK 6 OF MAPS AND PLATS AT PAGE 57 IN THE OFFICE OF THE PIMA COUNTY RECORDER PIMA COUNTY ARIZONA (EXCEPT THE SOUTH 5 FEET)

NOTES

- 1) ♀ INDICATES SET 1/2" PIN MKD L.S. 4680 UNLESS NOTED
- 2) M - MEASURED
- 3) R - MAP RECORD
- 4) HOUSE FROM DRAWING FURNISHED BY OWNER NOT VERIFIED
- 5) AREA 222,290 FT<sup>2</sup> 5.10 AC
- 6) ○ INDICATES 60D NAIL SET ON EDGE OF MAIN WASH

CURVE DATA				
NO.	RADIUS	DELTA	TANGENT	LENGTH
1	76.05	55°29'06"	40.0	73.65
2	129.69	34°17'00"	40.0	77.60



ROBERT F. MELLEN  
REGISTERED LAND SURVEYOR  
TUCSON, ARIZONA  
JOB # 81-80