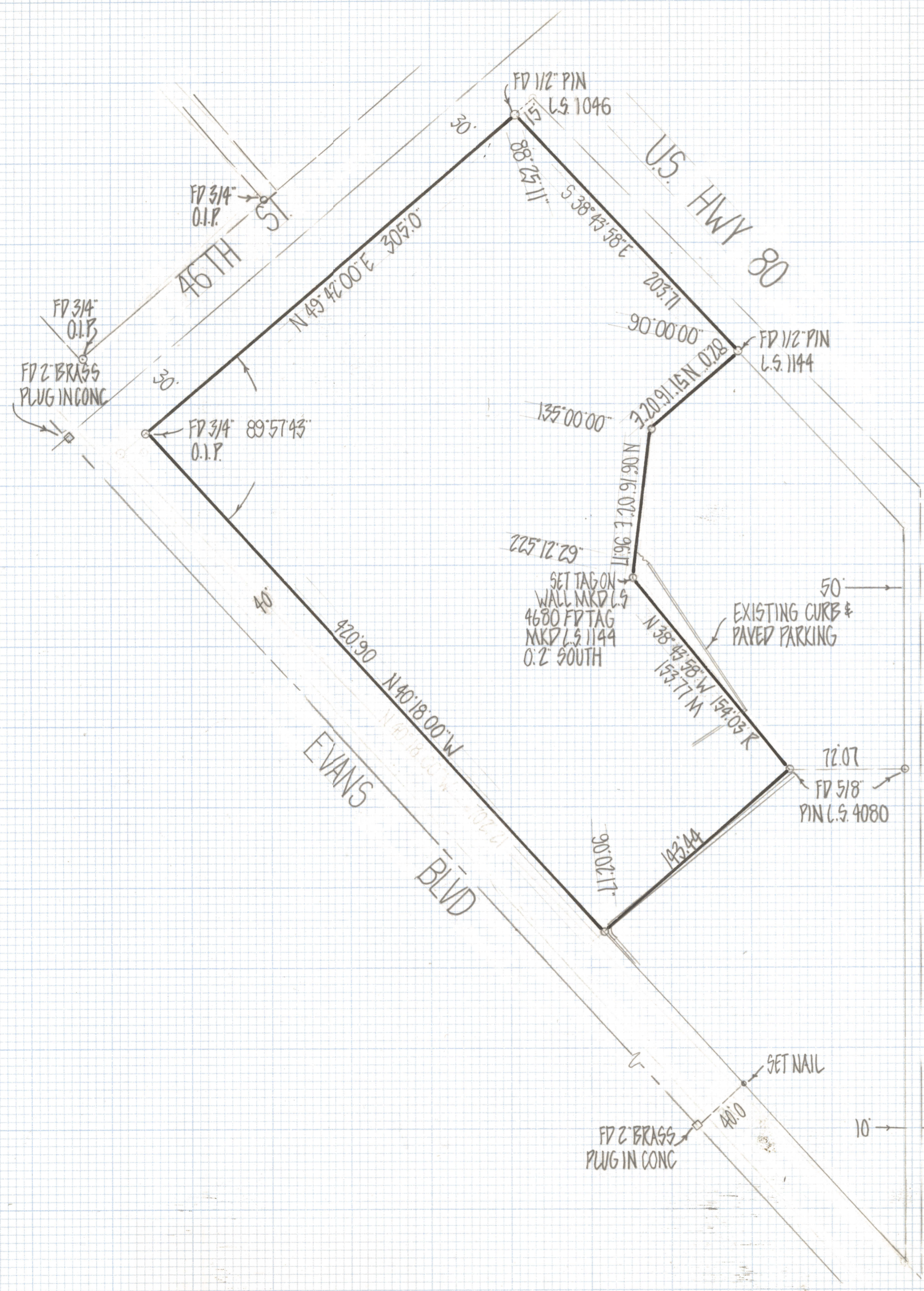
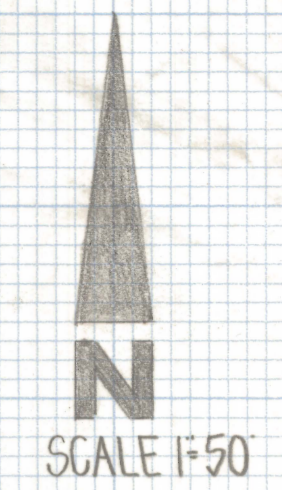


DISCLAIMER:

This unrecorded Record of Survey was donated to the City of Tucson. The City of Tucson provides this data for your personal use "as is." Additionally, the City of Tucson provides this information with the understanding that it is not guaranteed to be accurate, correct or complete and conclusions drawn from such information are the responsibility of the user.



RESULTS OF SURVEY

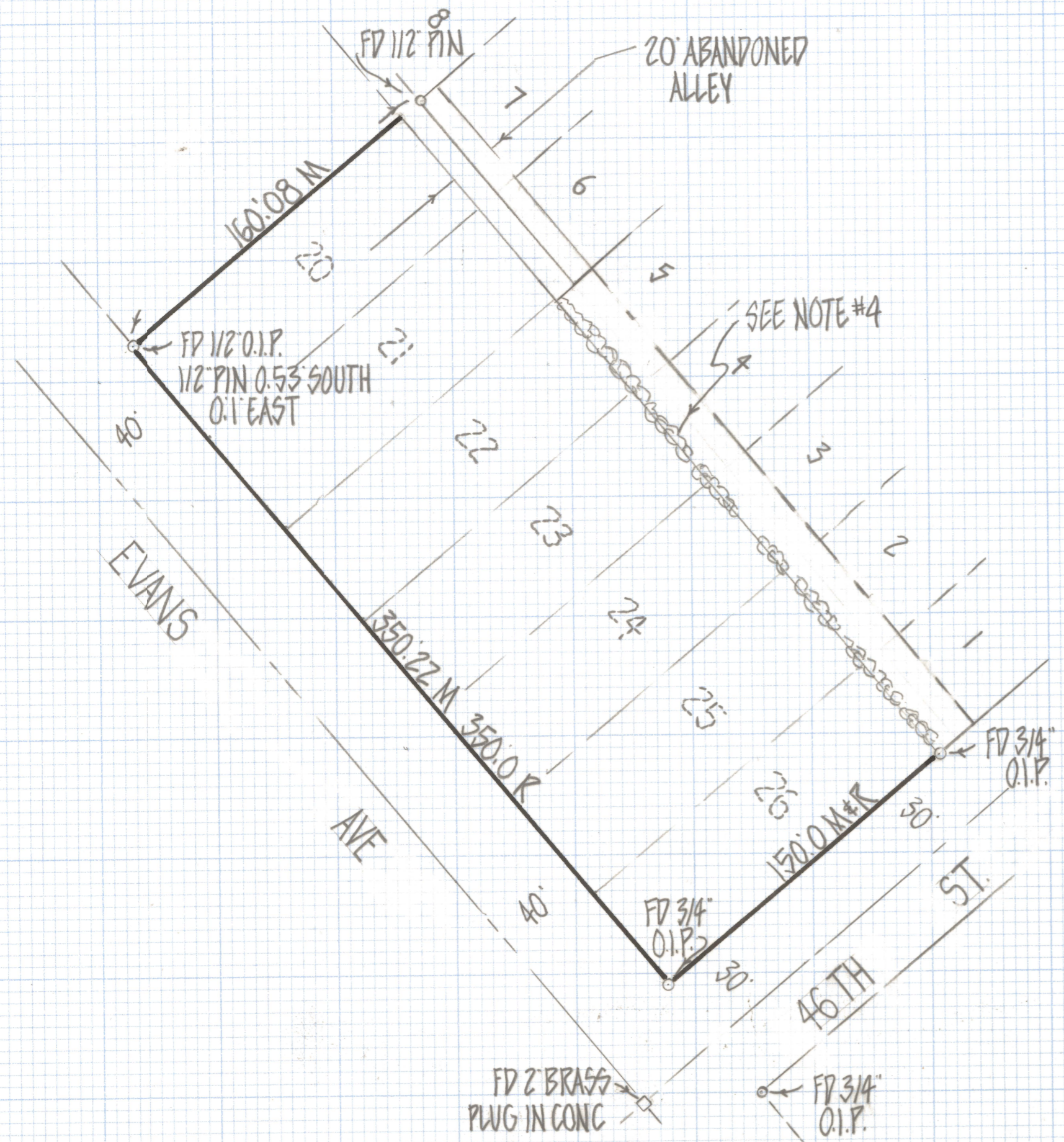
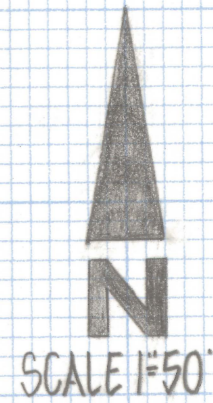
OF A PORTION OF LOTS 1 THRU 22 BLOCK 2 BROADWAY OF AMERICA RECORDED IN BOOK 6 OF MAPS AND PLATS AT PAGE 81 IN THE OFFICE OF THE PIMA COUNTY RECORDER PIMA COUNTY ARIZONA

NOTES

- 1) ♀ INDICATES SET 1/2" PIN MKD L.S. 4680 UNLESS NOTED
- 2) M- MEASURED
- 3) R- MAP RECORD



ROBERT F. MELLEN
 REGISTERED LAND SURVEYOR
 TUCSON, ARIZONA
 JOB # 81-81



RESULTS OF SURVEY

OF LOTS 20 THRU 26 OF BROADWAY OF AMERICA AS RECORDED IN BOOK 6 OF MAPS AND PLATS AT PAGE 81 IN THE OFFICE OF THE PIMA COUNTY RECORDER PIMA COUNTY ARIZONA

NOTES

- 1) ♀ INDICATES SET 1/2" PIN MKD L.S. 4680 UNLESS NOTED
- 2) M-MEASURED
- 3) R- MAP RECORD
- 4) THIS PORTION OF THE ABANDONED ALLEY IS OCCUPIED AS A PARKING LOT AND PLANTER AREA. OWNERSHIP APPEARS TO BE CLOUDED.



ROBERT F. MELLEN
 REGISTERED LAND SURVEYOR
 TUCSON ARIZONA
 JOB# 81-81-A