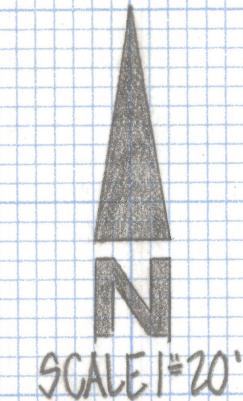
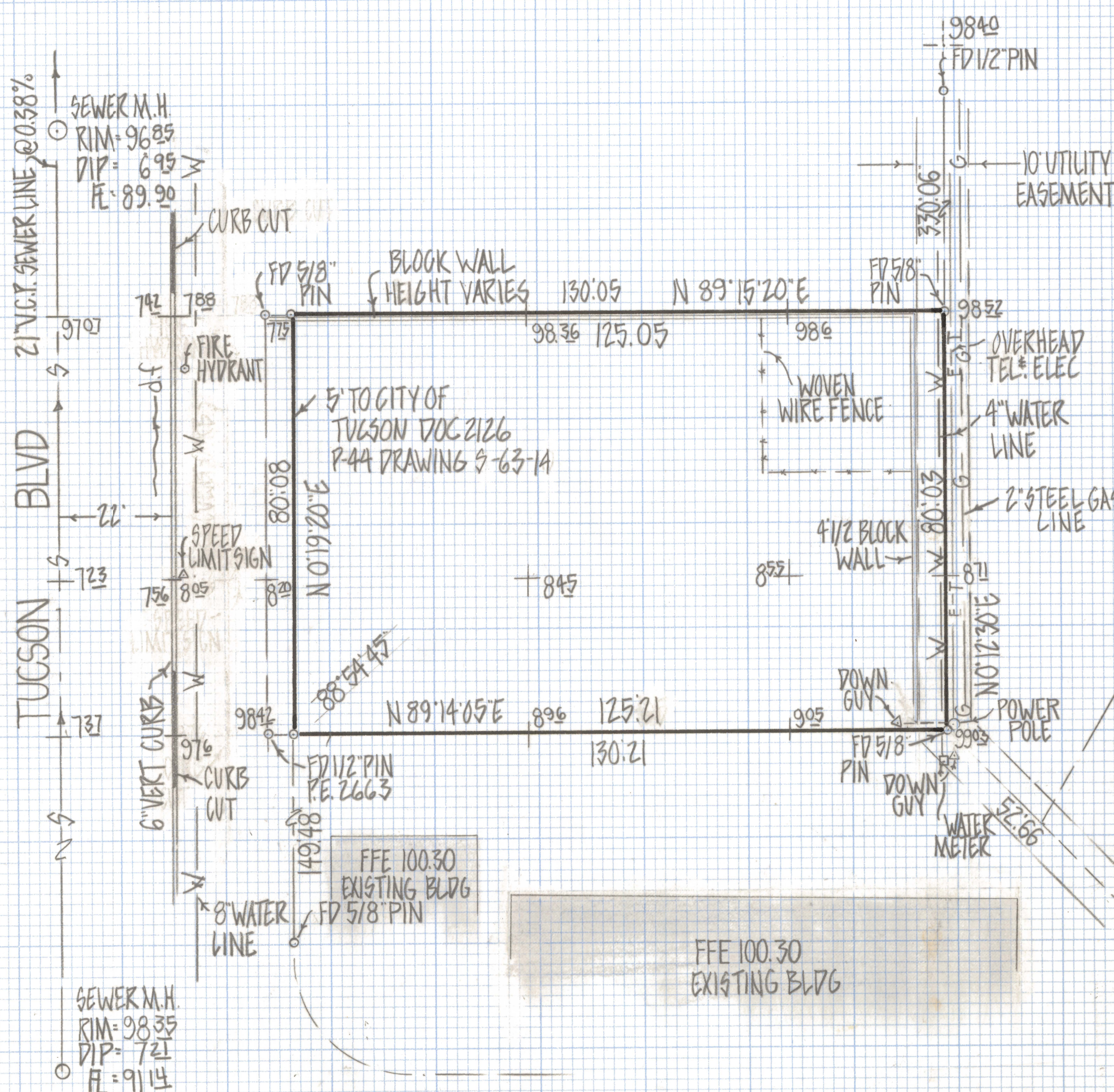


DISCLAIMER:

This unrecorded Record of Survey was donated to the City of Tucson. The City of Tucson provides this data for your personal use "as is." Additionally, the City of Tucson provides this information with the understanding that it is not guaranteed to be accurate, correct or complete and conclusions drawn from such information are the responsibility of the user.



RESULTS OF SURVEY

OF LOT 16 BLOCK 1 LA MADERA SUBDIVISION
 RECORDED IN BOOK 7 OF MAPS AND PLATS AT
 PAGE 92 IN THE OFFICE OF THE PIMA COUNTY
 RECORDER PIMA COUNTY ARIZONA

NOTES

- 1) \odot INDICATES SET 1/2" PIN MKD L.S. 4680 UNLESS NOTED
- 2) SEWER DATA CITY OF TUCSON PLAN G-141 SHEET 13 OF 23 BENCH MARK DATUM THIS PLAN F.E.M.H.#71 F.L.=2689.90
- 3) STREET PLANS CITY OF TUCSON I-74-10
- 4) ALL UTILITY LINES FROM EXISTING MAPS CALL BLUE STAKE 792-2211



ROBERT F. MELLEN
 REGISTERED LAND SURVEYOR
 TUCSON, ARIZONA
 JOB# 81-95