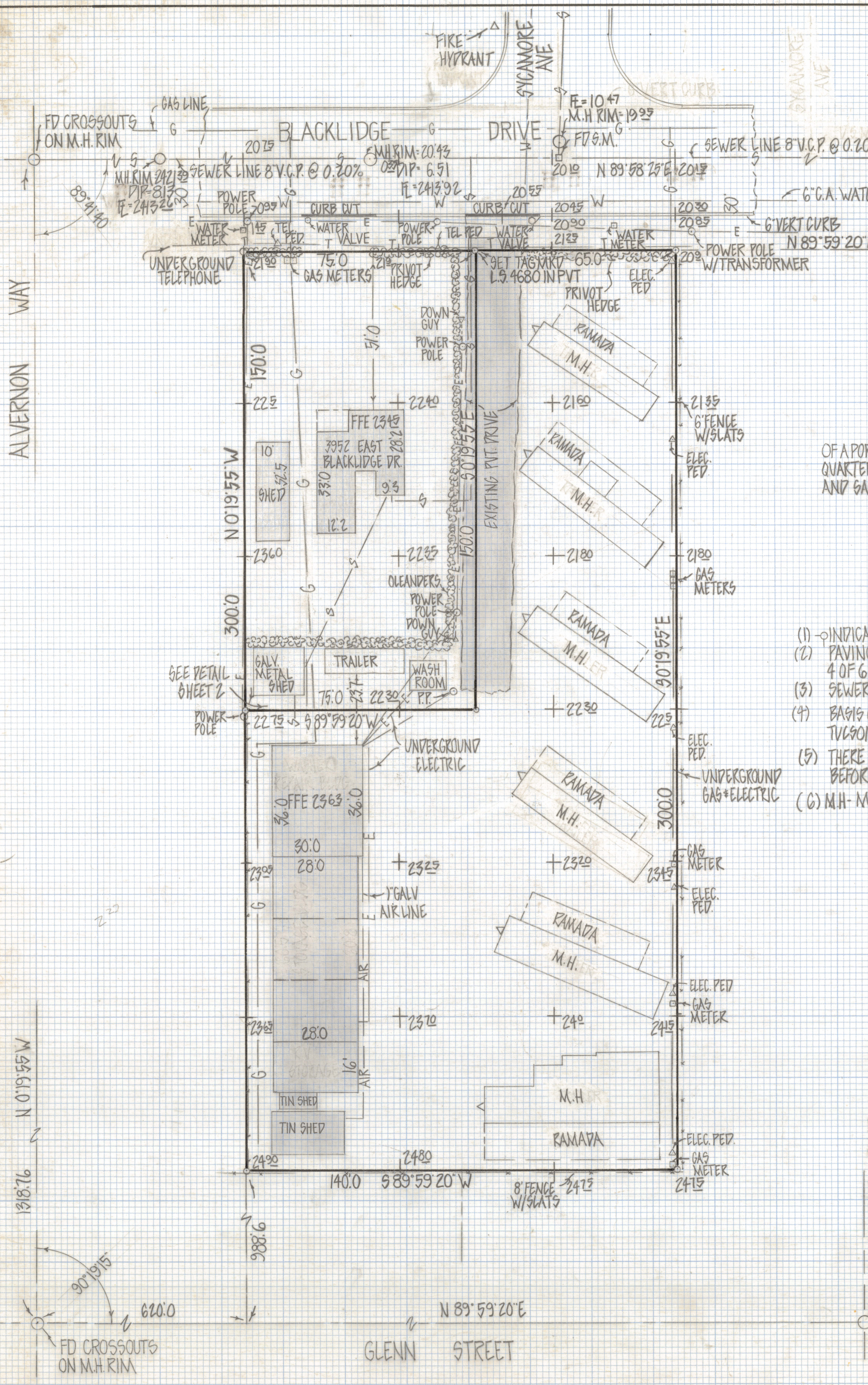
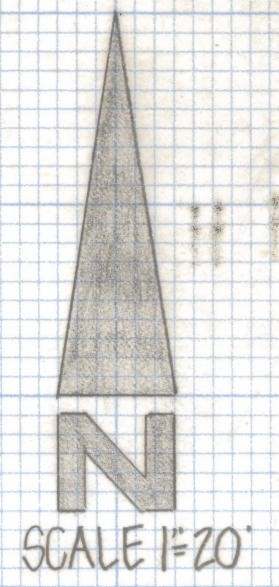


# **DISCLAIMER:**

**This unrecorded Record of Survey was donated to the City of Tucson. The City of Tucson provides this data for your personal use "as is." Additionally, the City of Tucson provides this information with the understanding that it is not guaranteed to be accurate, correct or complete and conclusions drawn from such information are the responsibility of the user.**



**RESULTS OF SURVEY**

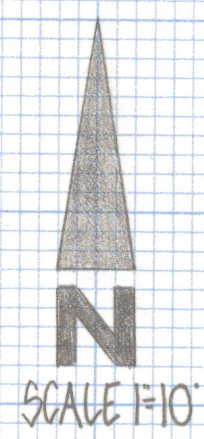
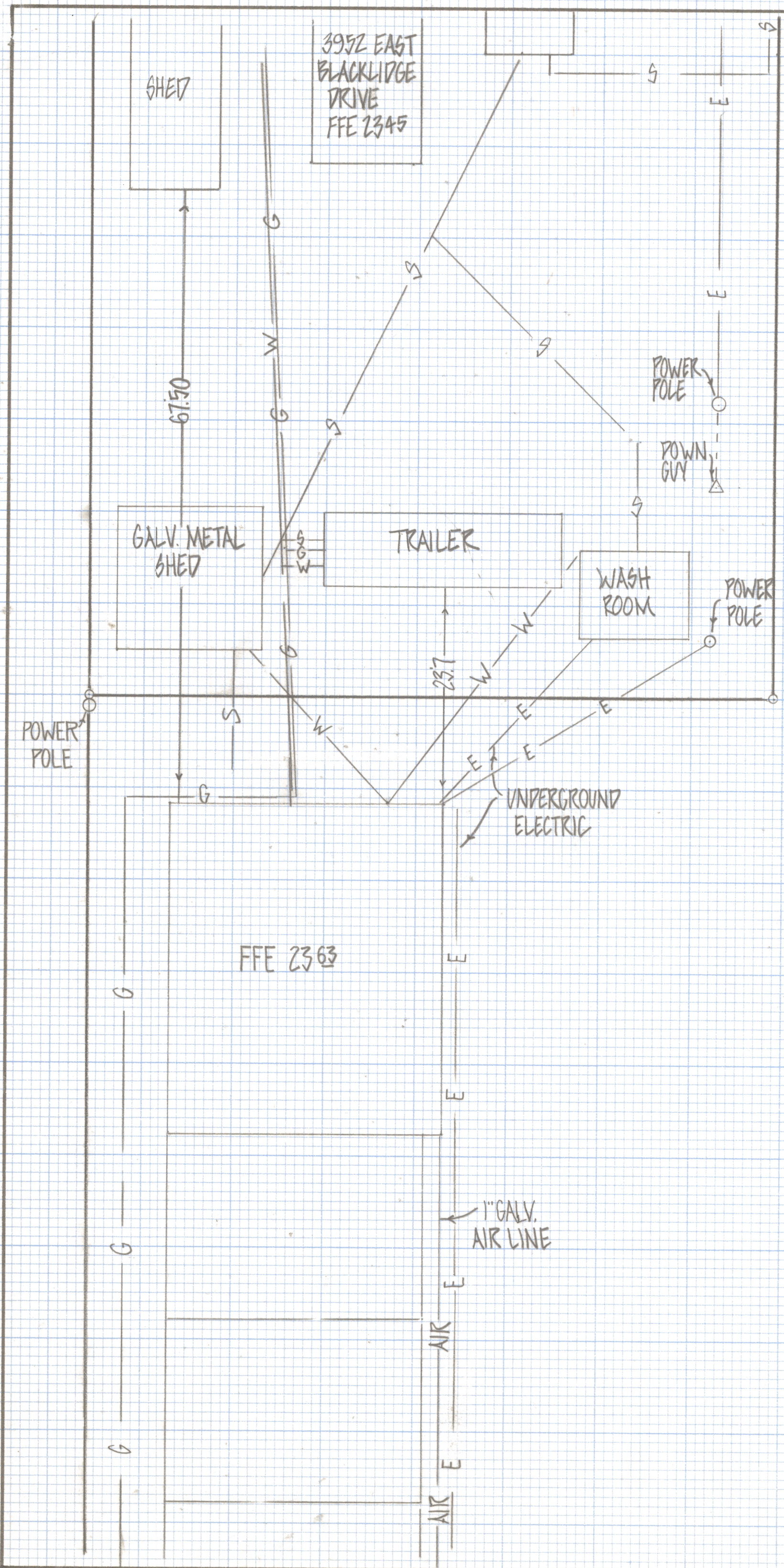
OF A PORTION OF THE SOUTHWEST QUARTER OF THE NORTHWEST QUARTER SECTION 34 TOWNSHIP 13 SOUTH RANGE 14 EAST GILA AND SALT RIVER BASE AND MERIDIAN PIMA COUNTY ARIZONA

**NOTES**

- (1)  $\odot$  INDICATES SET 1/2 PIN MKD L.S. 4680 UNLESS NOTED
- (2) PAVING PLANS PIMA COUNTY ARIZONA PLAN NO I-65-76 SHEET 4 OF 6
- (3) SEWER PLANS PIMA COUNTY ARIZONA PLAN NO G-182 SHEET 23 OF 43
- (4) BASIS OF BEARINGS N 0°19'55\" W FOR ALVERNON WAY PER CITY OF TUCSON PLAN R-67-6
- (5) THERE ARE UNDERGROUND UTILITIES IN THE AREA CALL BLUE STAKE BEFORE DIGGING OR IF LOCATION IS CRITICAL FOR DESIGN PURPOSES 792-2211
- (6) M.H. - MOBILE HOME



ROBERT F. MELLEN  
REGISTERED LAND SURVEYOR  
TUCSON, ARIZONA  
JOB # 81-101  
SHEET # 1 OF 2



SKETCH

SHOWING UTILITIES BEHIND 3952 EAST BLACKLIDGE DRIVE

NOTES

- (1) G - INDICATES GAS LINE
- (2) S - INDICATES SEWER LINE
- (3) W - INDICATES WATER LINE



ROBERT F. MELLEN  
 REGISTERED LAND SURVEYOR  
 TUCSON, ARIZONA  
 JOB # 81-101  
 SHEET 2

REVISED 10/2/81