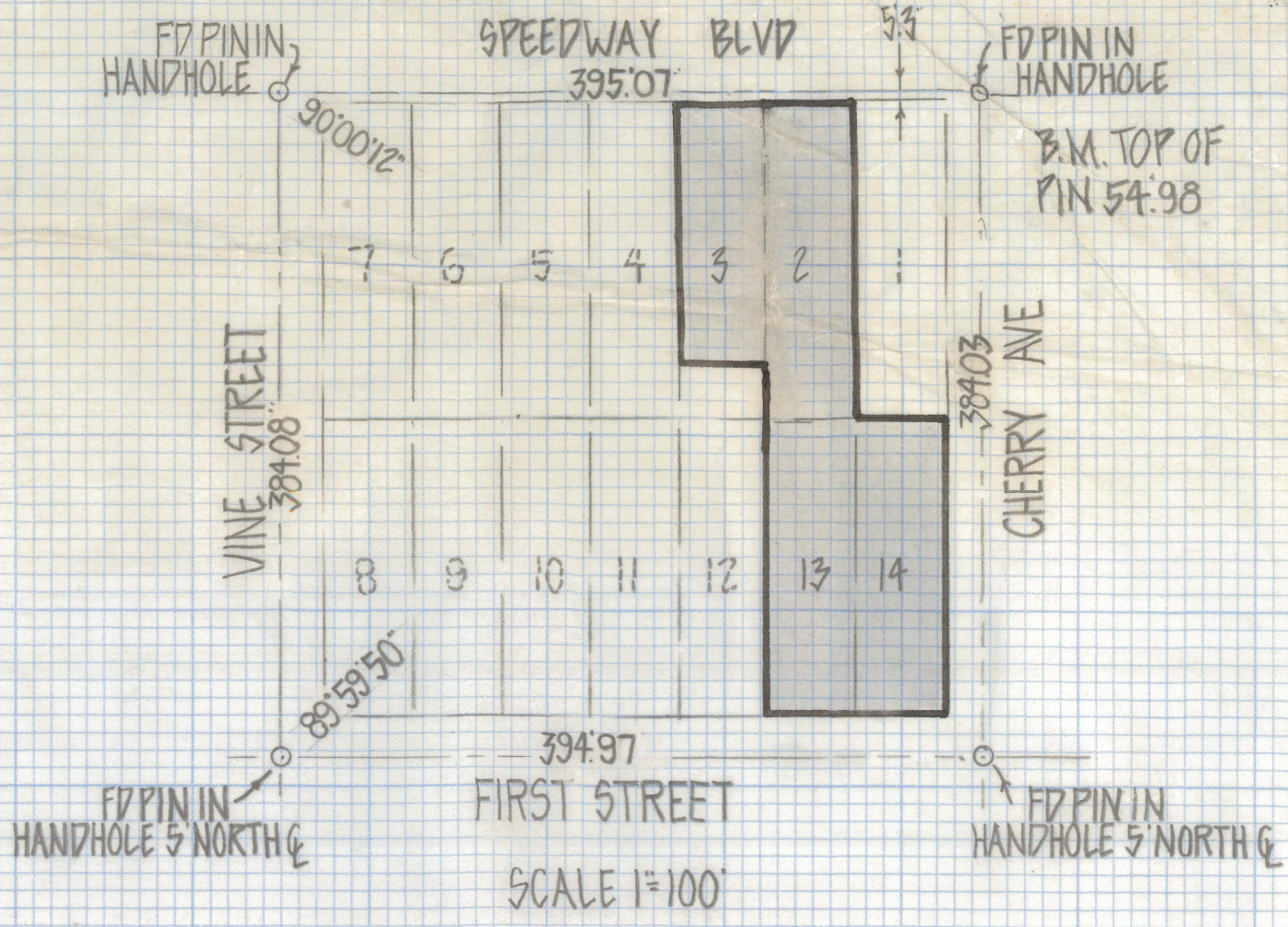


# **DISCLAIMER:**

**This unrecorded Record of Survey was donated to the City of Tucson. The City of Tucson provides this data for your personal use "as is." Additionally, the City of Tucson provides this information with the understanding that it is not guaranteed to be accurate, correct or complete and conclusions drawn from such information are the responsibility of the user.**



**RESULTS OF SURVEY**

OF LOTS 13 AND 14 AND PORTIONS OF LOTS 2 AND 3 BLOCK 5 OF UNIVERSITY EXTENSION ADDITION RECORDED IN BOOK 1 OF MAPS AND PLATS AT PAGE 18 IN THE OFFICE OF THE PIMA COUNTY RECORDER PIMA COUNTY ARIZONA

**NOTES**

- (1) -  $\odot$  INDICATES SET 1/2" PIN MKD L.S. 4680 UNLESS NOTED
- (2) - BENCH MARK CITY OF TUCSON DATUM PLAN I - SHEET 1 OF
- (3) - E- OVERHEAD ELECTRIC LINES
- (4) - UNDERGROUND UTILITIES IN THE AREA CALL BLUE STAKE BEFORE YOU DIG 792-2211
- (5) - BASIS OF BEARINGS N 0° 24' 44" W FOR CHERRY AVE CITY OF TUCSON PLAN I -

ROBERT F. MELLE  
 REGISTERED LAND SURVEYOR  
 TUCSON, ARIZONA  
 JOB # 81-106