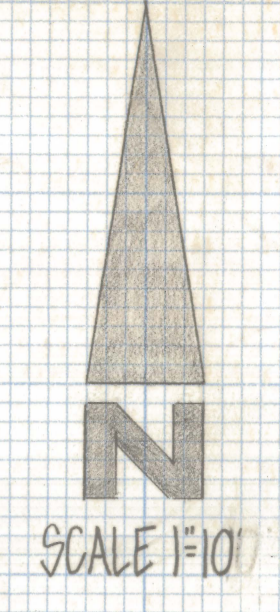


DISCLAIMER:

This unrecorded Record of Survey was donated to the City of Tucson. The City of Tucson provides this data for your personal use "as is." Additionally, the City of Tucson provides this information with the understanding that it is not guaranteed to be accurate, correct or complete and conclusions drawn from such information are the responsibility of the user.

S 89° 46' 00" E

AJO WAY



RESULTS OF SURVEY

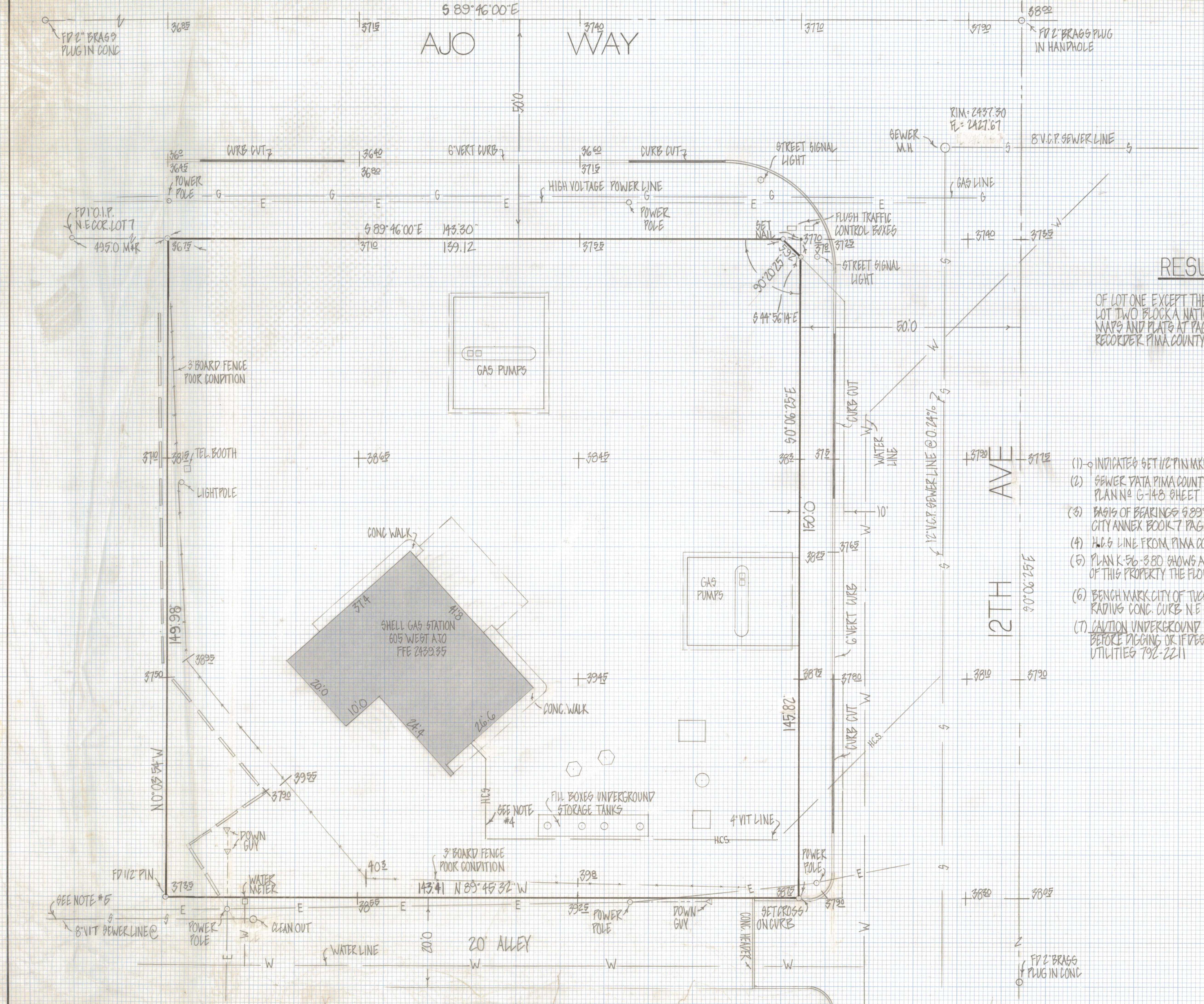
OF LOT ONE EXCEPT THE EAST 10 FEET, AND THE EAST 15 FEET OF LOT TWO BLOCK A NATIONAL CITY ANNEX, RECORDED IN BOOK 7 OF MAPS AND PLATS AT PAGE 62 IN THE OFFICE OF THE PINA COUNTY RECORDER PINA COUNTY ARIZONA.

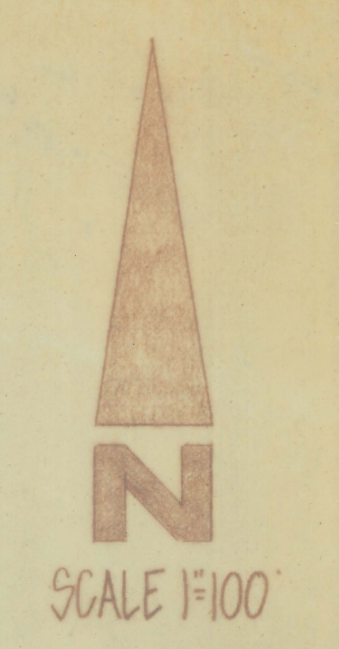
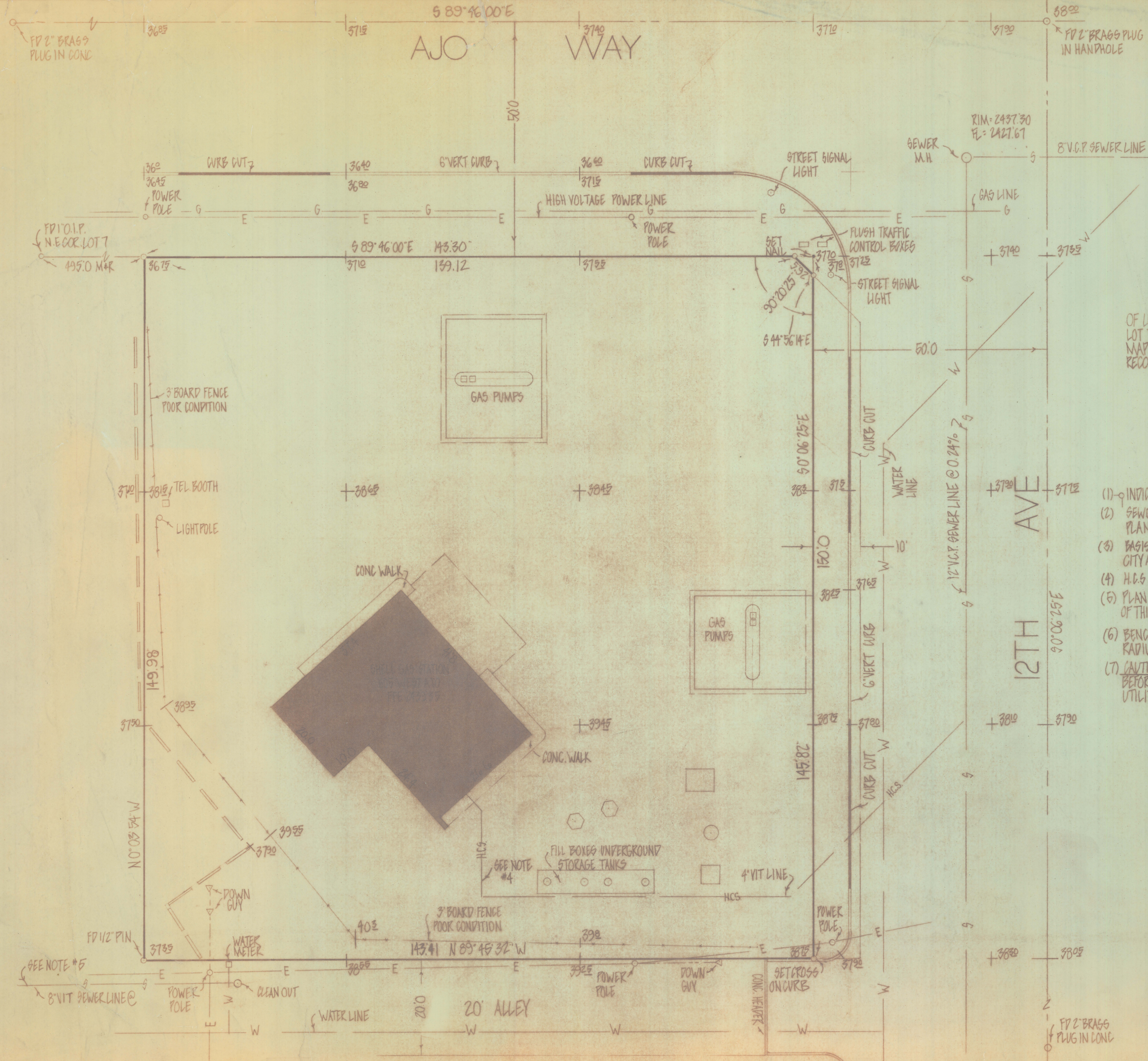
NOTES

- (1) - INDICATES SET 1/2" PIN MKD L.S. 4680 UNLESS NOTED
- (2) SEWER DATA PINA COUNTY ARIZONA PLAN NO K-56-380 SHEET 2 OF 7 AND PLAN NO G-148 SHEET 10 OF 22 AND PLAN NO G-331
- (3) BASIS OF BEARINGS S 89° 46' 00" E AS SHOWN FOR AJO ROAD ON NATIONAL CITY ANNEX BOOK 7 PAGE 62 MAPS AND PLATS
- (4) H.C.S. LINE FROM PINA COUNTY RECORDS NOT VERIFIED
- (5) PLAN K-56-380 SHOWS A 8" VIT SEWER LINE AT THE SOUTHWEST CORNER OF THIS PROPERTY THE FLOW LINE ELEVATION IS NOT LEGIBLE
- (6) BENCH MARK CITY OF TUCSON DATUM ELEVATION 2437.36 CROSS ON MID RADIUS CONC. CURB N.E. COR. 12TH AND AJO WAY
- (7) CAUTION UNDERGROUND UTILITIES ARE IN THE AREA CALL BLUE STAKE BEFORE DIGGING OR IF DESIGN OF PROTECT MAY CONFLICT WITH UNDERGROUND UTILITIES 792-2211



ROBERT F. MELLEN
REGISTERED LAND SURVEYOR
TUCSON, ARIZONA
JOB # 81-110





RESULTS OF SURVEY

OF LOT ONE EXCEPT THE EAST 10 FEET, AND THE EAST 15 FEET OF LOT TWO BLOCK A NATIONAL CITY ANNEX, RECORDED IN BOOK 7 OF MAPS AND PLATS AT PAGE 62 IN THE OFFICE OF THE PIMA COUNTY RECORDER PIMA COUNTY ARIZONA.

NOTES

- (1) - INDICATES SET 1/2" PIN MKD L.S. 4680 UNLESS NOTED
- (2) SEWER DATA PIMA COUNTY ARIZONA PLAN N° K-56-380 SHEET 2 OF 7 AND PLAN N° G-148 SHEET 10 OF 22 AND PLAN N° G-331
- (3) BASIS OF BEARINGS $89^{\circ}46'00''E$ AS SHOWN FOR AJO ROAD ON NATIONAL CITY ANNEX BOOK 7 PAGE 62 MAPS AND PLATS
- (4) H.C.S. LINE FROM PIMA COUNTY RECORDS NOT VERIFIED
- (5) PLAN K-56-380 SHOWS A 8" VIT SEWER LINE AT THE SOUTHWEST CORNER OF THIS PROPERTY THE FLOW LINE ELEVATION IS NOT LEGIBLE
- (6) BENCH MARK CITY OF TUCSON DATUM ELEVATION 2437.36 CROSS ON MID RADIUS CONC. CURB N.E. COR. 12TH AND AJO WAY
- (7) CAUTION UNDERGROUND UTILITIES ARE IN THE AREA CALL BLUE STAKE BEFORE DIGGING OR IF DESIGN OF PROJECT MAY CONFLICT WITH UNDERGROUND UTILITIES 792-2211



ROBERT F. MELLEN
REGISTERED LAND SURVEYOR
TUCSON, ARIZONA
JOB # 81-110