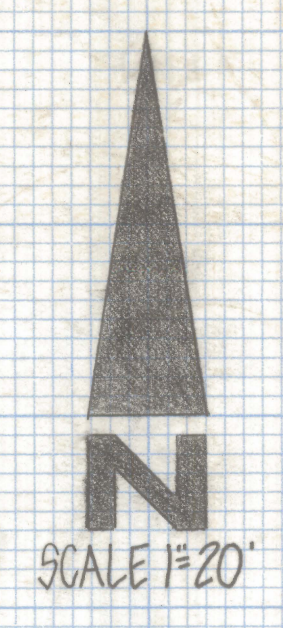
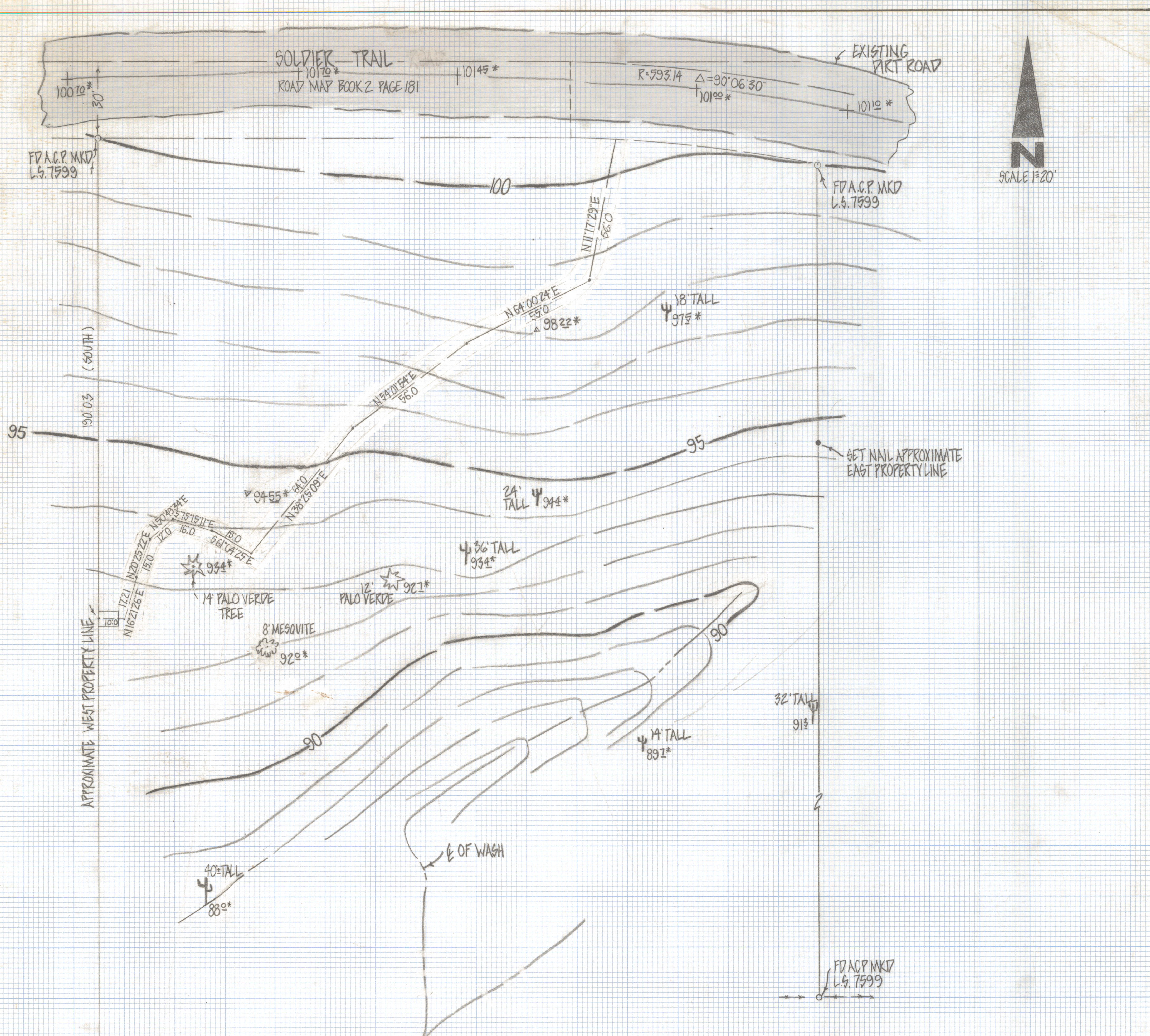


# **DISCLAIMER:**

**This unrecorded Record of Survey was donated to the City of Tucson. The City of Tucson provides this data for your personal use "as is." Additionally, the City of Tucson provides this information with the understanding that it is not guaranteed to be accurate, correct or complete and conclusions drawn from such information are the responsibility of the user.**





RESULTS OF  
TOP TOPOGRAPHICAL SURVEY

OF A PORTION OF THE SOUTHEAST QUARTER SECTION 18 TOWNSHIP 13 SOUTH RANGE 16 EAST GILA AND SALT RIVER BASE AND MERIDIAN PIMA COUNTY ARIZONA

NOTES

- (1) NORTHWEST CORNER OF PROPERTY ASSUMED ELEVATION 100<sup>00</sup>
- (2) Δ - INDICATES HUB AND TACK AND ELEVATION
- (3) Ψ 34' - INDICATES SAGUARO AND APPROXIMATE HEIGHT
- (4) ☆ 12' - INDICATES PALO VERDE TREE AND APPROXIMATE HEIGHT
- (5) ⚙ 12' - INDICATES MESQUITE TREE AND APPROXIMATE HEIGHT
- (6) ACP - ALUMINUM CAPPED PIN
- (7) THIS IS NOT A BOUNDARY SURVEY ALL MEASUREMENTS BY STADIA
- (8) CONTOUR INTERVAL 1 FOOT
- (9) \* - INDICATES ELEVATION



ROBERT F. MELLEN  
REGISTERED LAND SURVEYOR  
TUCSON, ARIZONA  
JOB # 81-112