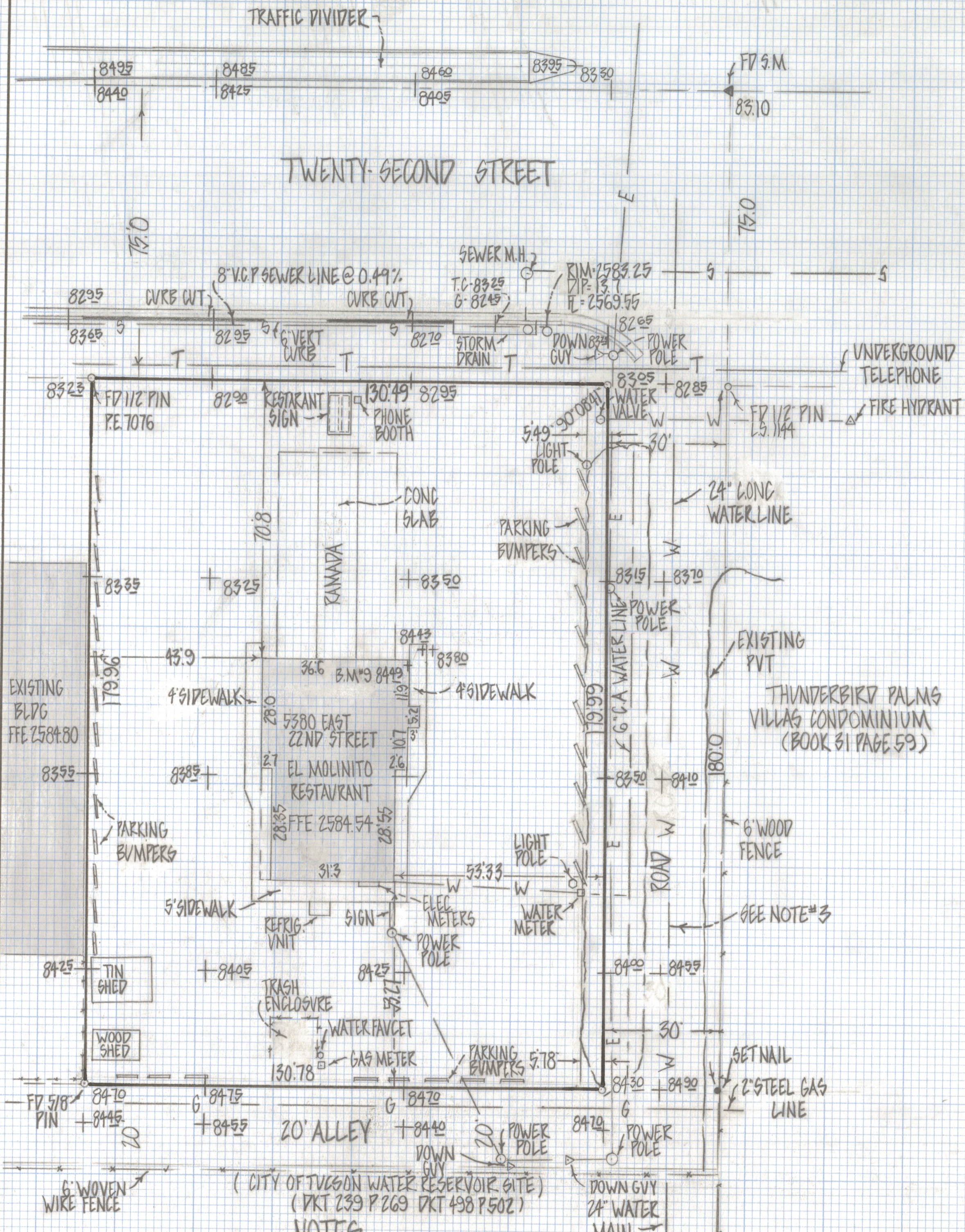
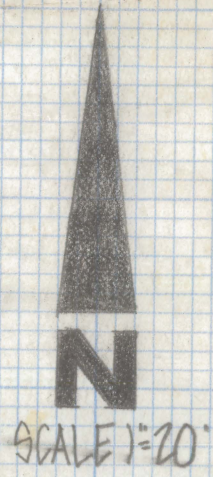


DISCLAIMER:

This unrecorded Record of Survey was donated to the City of Tucson. The City of Tucson provides this data for your personal use "as is." Additionally, the City of Tucson provides this information with the understanding that it is not guaranteed to be accurate, correct or complete and conclusions drawn from such information are the responsibility of the user.

RESULTS OF SURVEY

OFA PORTION OF THE EAST HALF OF THE
NORTHEAST QUARTER SECTION 23 TOWNSHIP
14 SOUTH RANGE 14 EAST GILA AND GALT RIVER
BASE AND MERIDIAN PIMA COUNTY ARIZONA



NOTES

- (1) \circ INDICATES SET 1/2" PIN MKD L.S. 4680 UNLESS NOTED
- (2) SEWER DATA PLAN NO G-303 SHEET #2 PIMA COUNTY ARIZONA
- (3) NOTE UTILITY LINES ARE LOCATED FROM EXISTING MAPS AND ARE NOT INTENDED TO BE ACCURATE CALL BLUE STAKE AT 792-2211 FOR ACCURATE LOCATION
- (4) BENCH MARK CITY OF TUCSON DATUM PLAN G-303 SHEET #2 B.M.#9 CROSS ON CONC. N.E. COR OF EL MOLINITO RESTAURANT 5380 EAST 22ND STREET ELEV 2584.49



ROBERT F. MELLEN
REGISTERED LAND SURVEYOR
TUCSON, ARIZONA
JOB # 81-117

REVISED 11-2-81