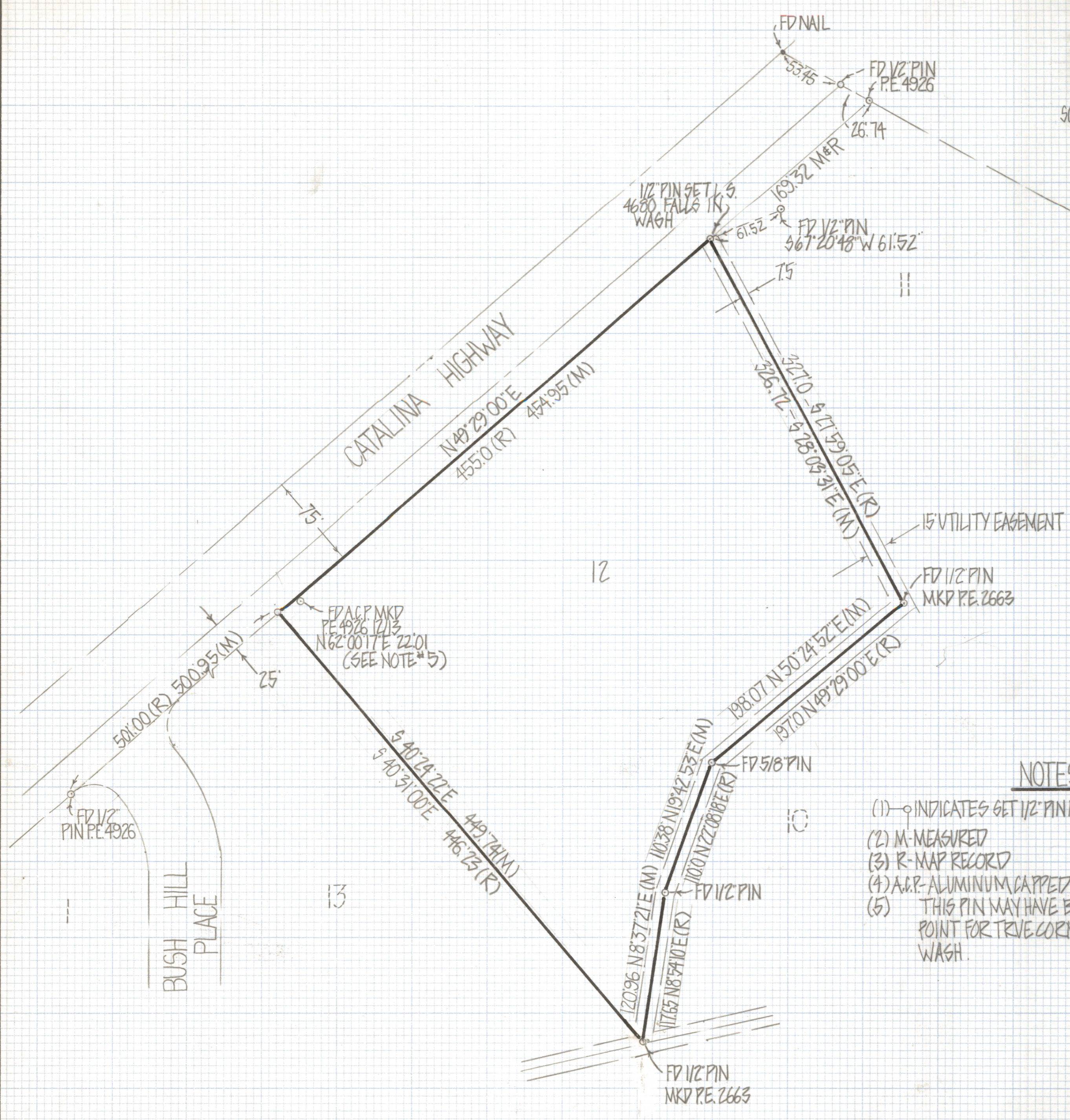
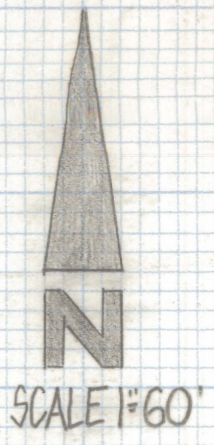


DISCLAIMER:

This unrecorded Record of Survey was donated to the City of Tucson. The City of Tucson provides this data for your personal use "as is." Additionally, the City of Tucson provides this information with the understanding that it is not guaranteed to be accurate, correct or complete and conclusions drawn from such information are the responsibility of the user.



NOTES

- (1) - \circ INDICATES SET 1/2" PIN MKD L.S. 4680 UNLESS NOTED
- (2) M - MEASURED
- (3) R - MAP RECORD
- (4) A.C.P. - ALUMINUM CAPPED PIN
- (5) THIS PIN MAY HAVE BEEN SET AS A REFERENCE POINT FOR TRUE CORNER WHICH FALLS IN WASH.

RESULTS OF SURVEY

OF LOT 12 INDIAN HILLS No 2 RECORDED IN BOOK 19 OF MAPS AND PLATS AT PAGE 80 IN THE OFFICE OF THE PIMA COUNTY RECORDER PIMA COUNTY ARIZONA



ROBERT F. MELLEN
 REGISTERED LAND SURVEYOR
 TUCSON, ARIZONA
 JOB #81-131