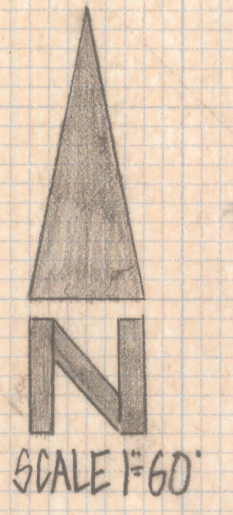


DISCLAIMER:

This unrecorded Record of Survey was donated to the City of Tucson. The City of Tucson provides this data for your personal use "as is." Additionally, the City of Tucson provides this information with the understanding that it is not guaranteed to be accurate, correct or complete and conclusions drawn from such information are the responsibility of the user.

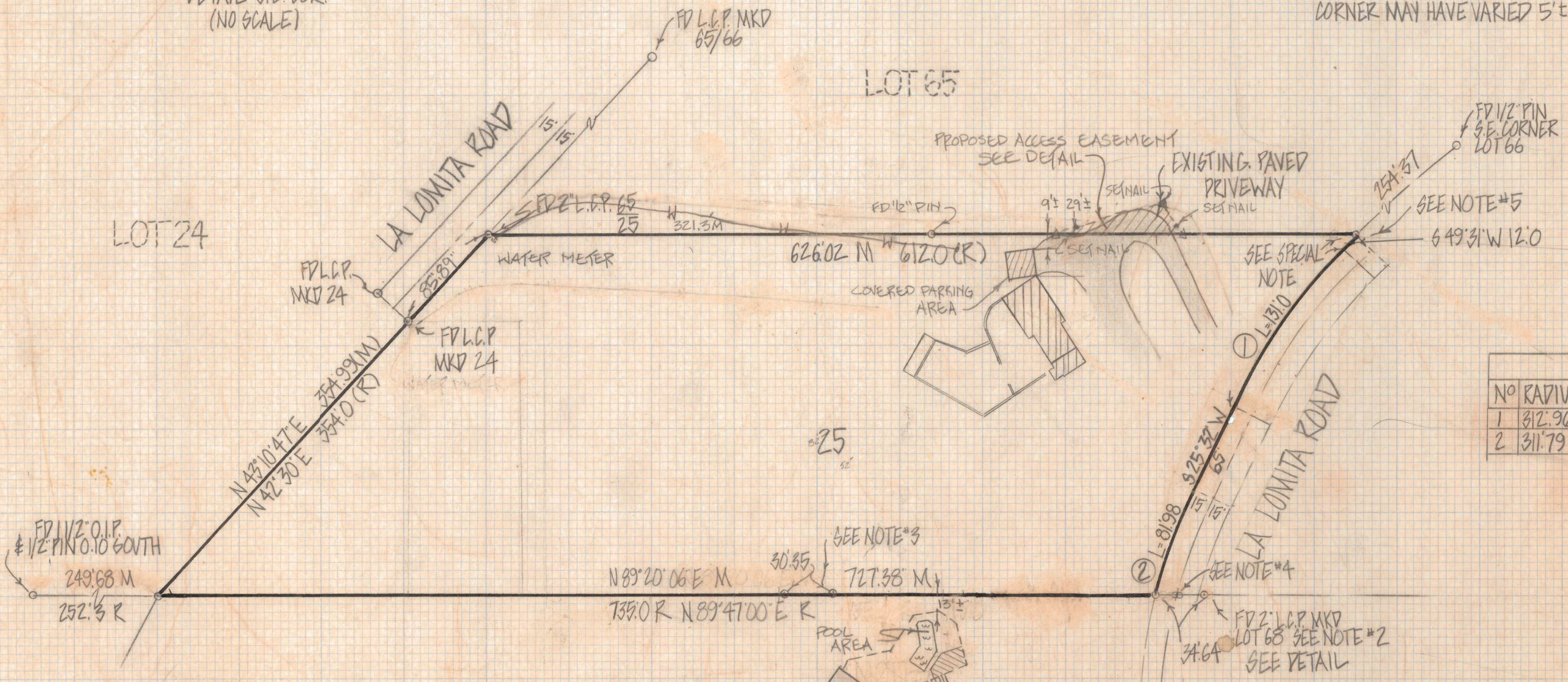
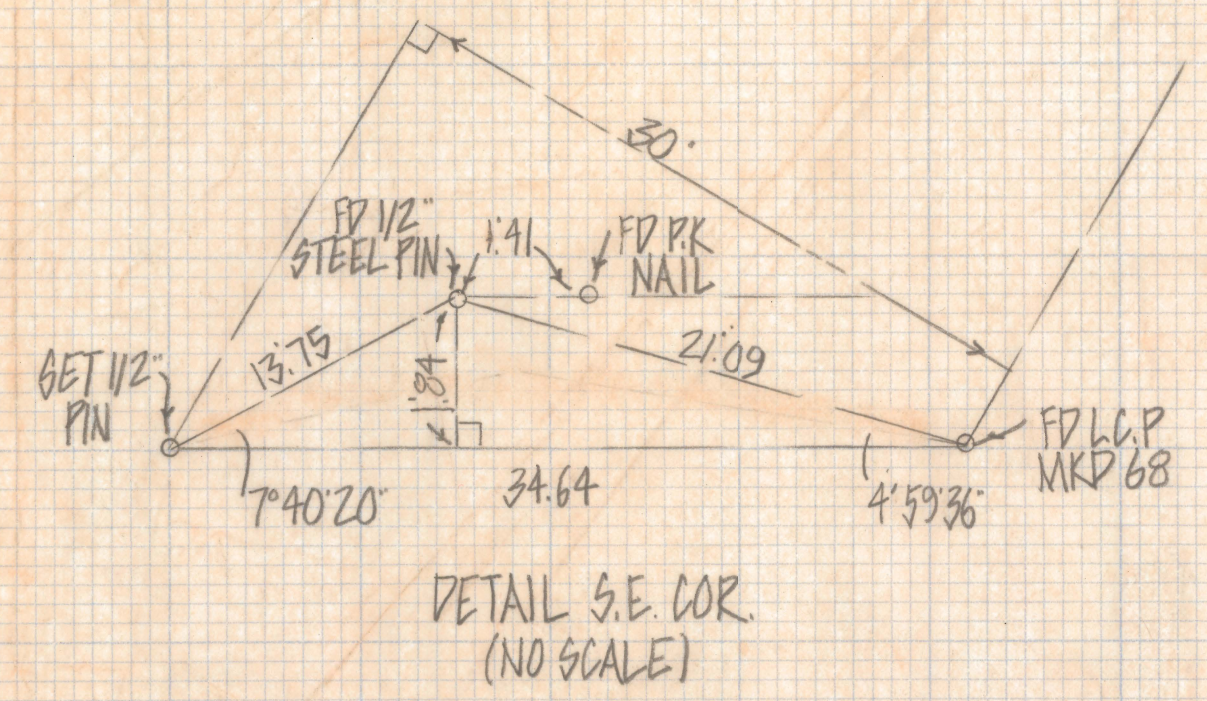


RESULTS OF SURVEY

OF LOT 25 CATALINA FOOTHILLS ESTATES RECORDED IN BOOK 6 OF MAPS AND PLATS AT PAGE 57 IN THE OFFICE OF THE PIMA COUNTY RECORDER PIMA COUNTY ARIZONA

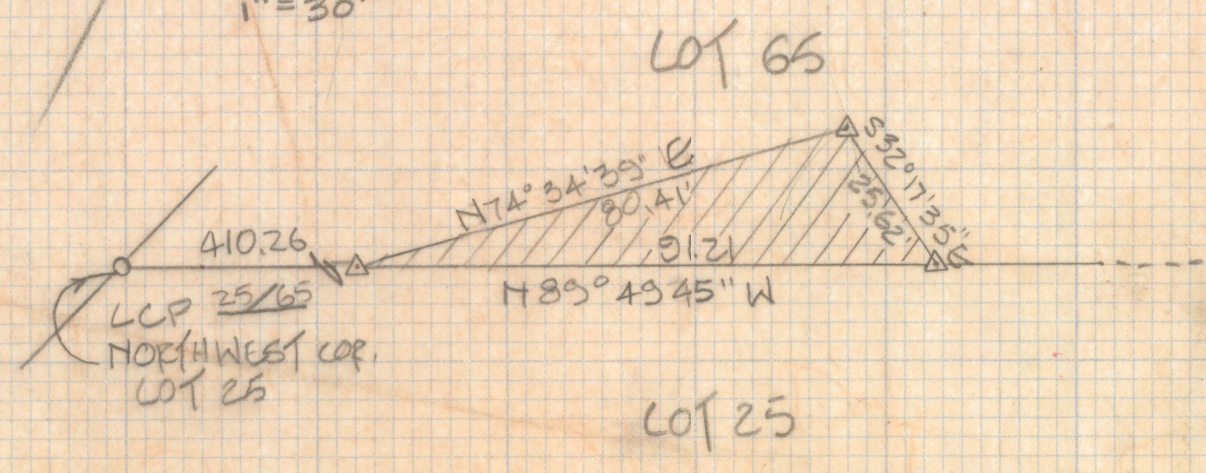
* SPECIAL NOTE *

THE NORTHEAST CORNER OF LOT 25 IS NOT CLEARLY SHOWN ON THE SUBDIVISION MAP OR CAN IT BE IDENTIFIED ACCURATELY IN THE FIELD THE ORIGINAL CORNER MAY HAVE VARIED 5'± FROM POINT SET



CURVE DATA					
NO	RADIUS	DELTA	TANGENT	LENGTH	CHORD
1	312.96	23°59'00"	66.47'	131.0	30.05
2	311.79	150°52'	41.23'	81.98	81.74

DETAIL
1"=30'



NOTES

- (1) - INDICATES 1/2" PIN MKD L.S. 4680 UNLESS NOTED
- (2) THIS CORNER APPARENTLY MARKED IN ERROR
- (3) FOUND 2 A.C.P MKD L.S. 7599 1.5'± NORTH OF LINE
- (4) FOUND 1/2" PIN AND P.K. NAIL APPROXIMATELY ON THIS LINE SEE DETAIL
- (5) THIS CORNER MOVED EAST ON LINE TO FIT PAVEMENT
- (6) AREA OF WHOLE PARCEL 166,430 FT²± 3.82 ACRES



ROBERT F. MELLEN
REGISTERED LAND SURVEYOR
TUCSON, ARIZONA
JOB #82-5

REVISED HOUSES & WATERLINE 5-17-86 GW