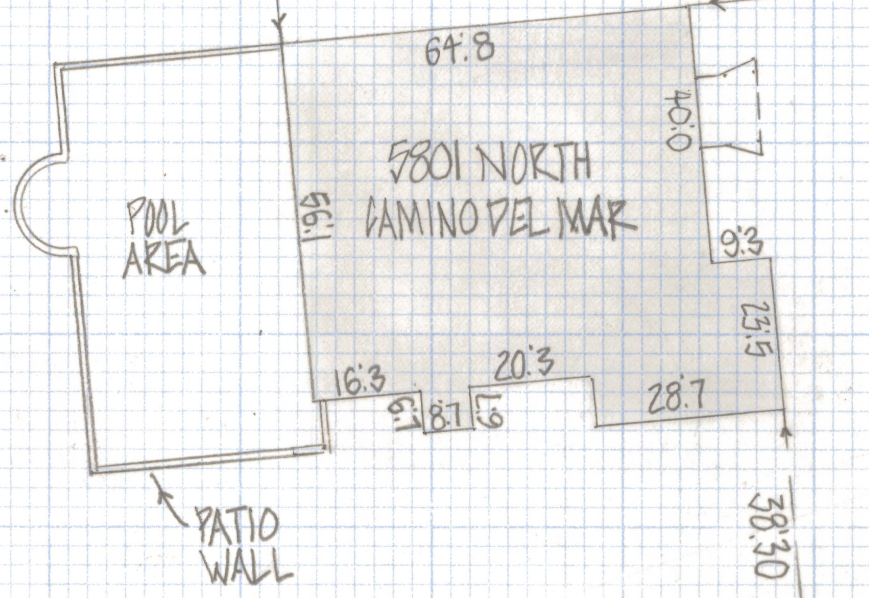
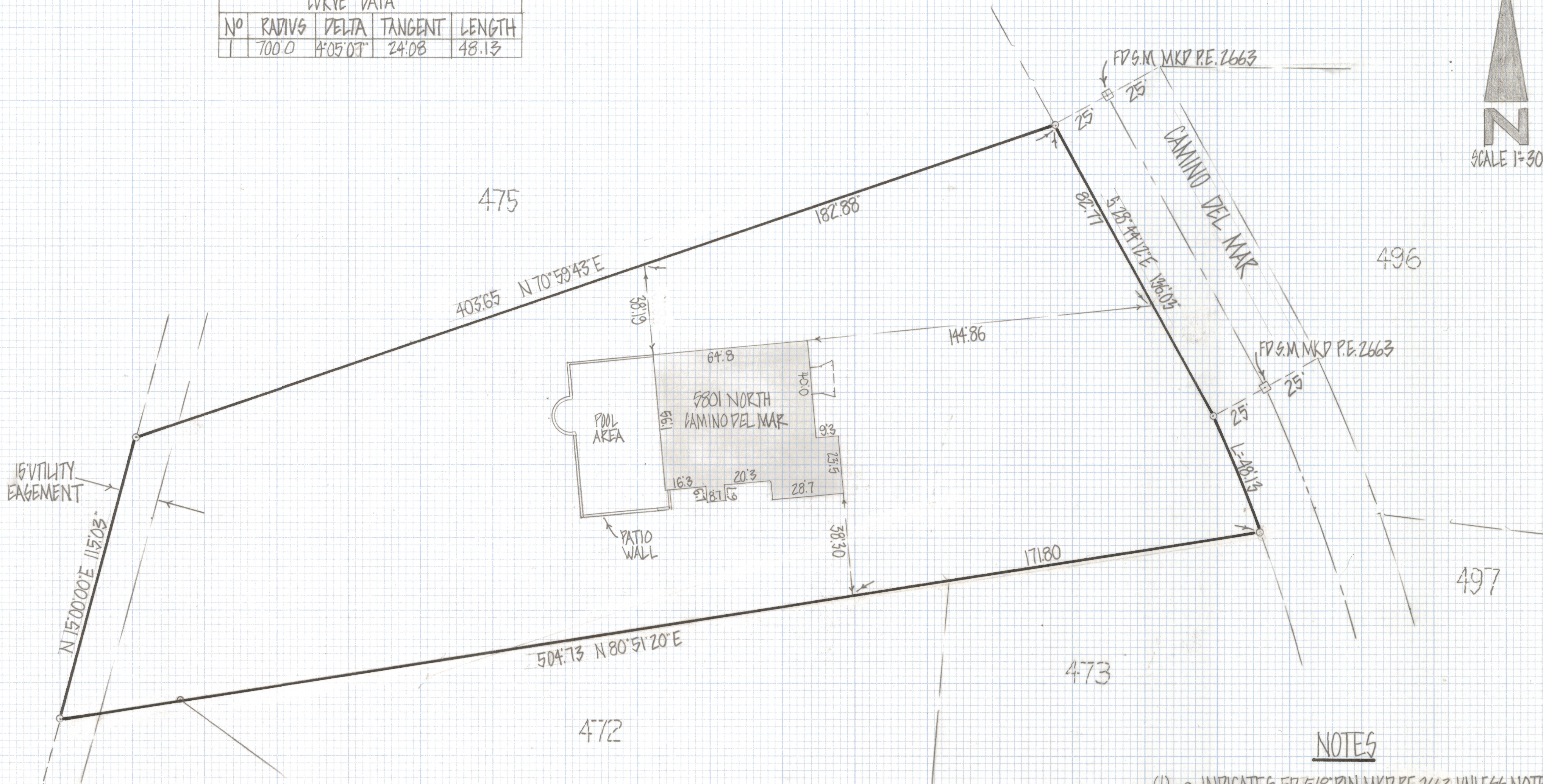
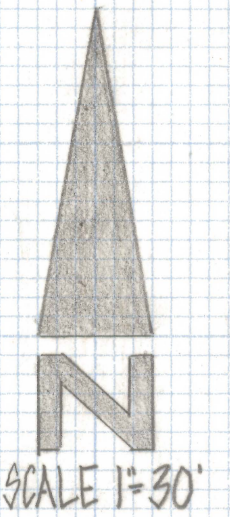


DISCLAIMER:

This unrecorded Record of Survey was donated to the City of Tucson. The City of Tucson provides this data for your personal use "as is." Additionally, the City of Tucson provides this information with the understanding that it is not guaranteed to be accurate, correct or complete and conclusions drawn from such information are the responsibility of the user.

CURVE DATA				
NO	RADIUS	DELTA	TANGENT	LENGTH
1	700.0	4°05'07"	24'08"	48.13



NOTES

(1)  INDICATES FD 5/8\" PIN MKD P.E. 2663 UNLESS NOTED

RESULTS OF SURVEY

OF LOT 474 SKYLINE BELAIR ESTATES RECORDED IN BOOK 22 OF MAPS AND PLATS AT PAGE 88 IN THE OFFICE OF THE PIMA COUNTY RECORDER PIMA COUNTY ARIZONA



ROBERT F. MELLEN
REGISTERED LAND SURVEYOR
TUCSON, ARIZONA
JOB# 82-7