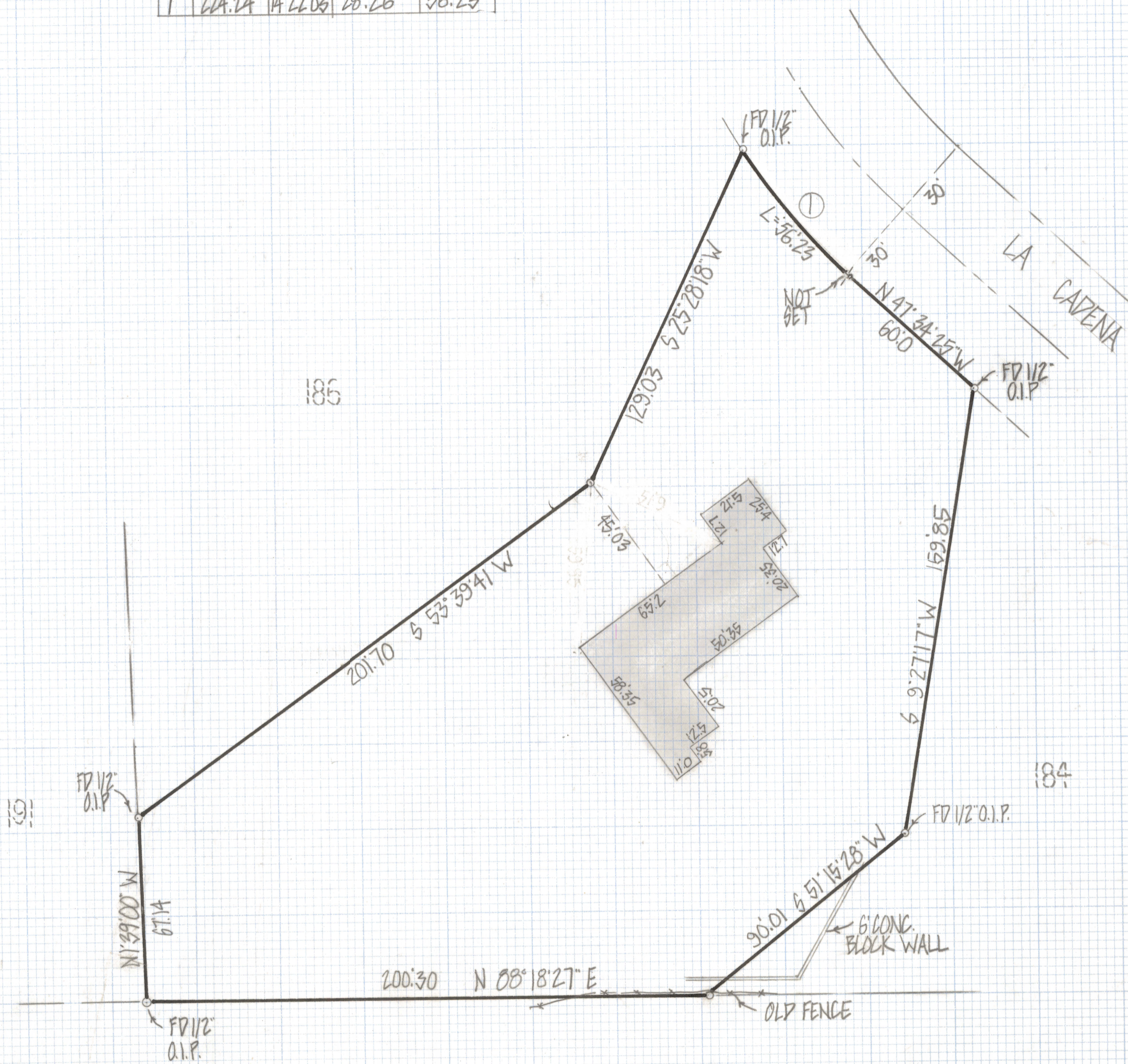
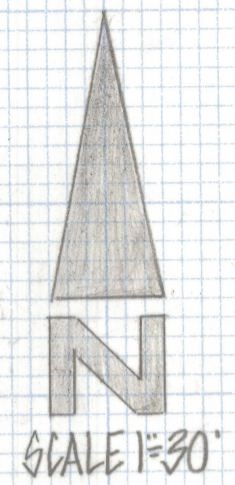


DISCLAIMER:

This unrecorded Record of Survey was donated to the City of Tucson. The City of Tucson provides this data for your personal use "as is." Additionally, the City of Tucson provides this information with the understanding that it is not guaranteed to be accurate, correct or complete and conclusions drawn from such information are the responsibility of the user.

CURVE DATA				
NO	RADIUS	DELTA	TANGENT	LENGTH
1	224.24	14°22'03"	28.26	56.23



RESULTS OF SURVEY
 OF LOT 185 FLECHA CAIYA RANCH ESTATES #4 RECORDED IN BOOK 12 OF MAPS AND PLATS AT PAGE 86 IN THE OFFICE OF THE PINA COUNTY RECORDER, PINA COUNTY, ARIZONA

- NOTES
- (1) - 9 INDICATES 1/2" PIN SET MKD L.S. 4680 UNLESS NOTED
 - (2) ONLY THOSE PORTIONS OF PATIO WALL WHICH PROTECT BEYOND THE PROPERTY LINE WERE LOCATED
 - (3) O.I.P. - OPEN IRON PIPE
 - (4) ① - INDICATES CURVE NO SEE CURVE TABLE



ROBERT F. MELLEN
 REGISTERED LAND SURVEYOR
 TUCSON, ARIZONA
 JOB # 82-10