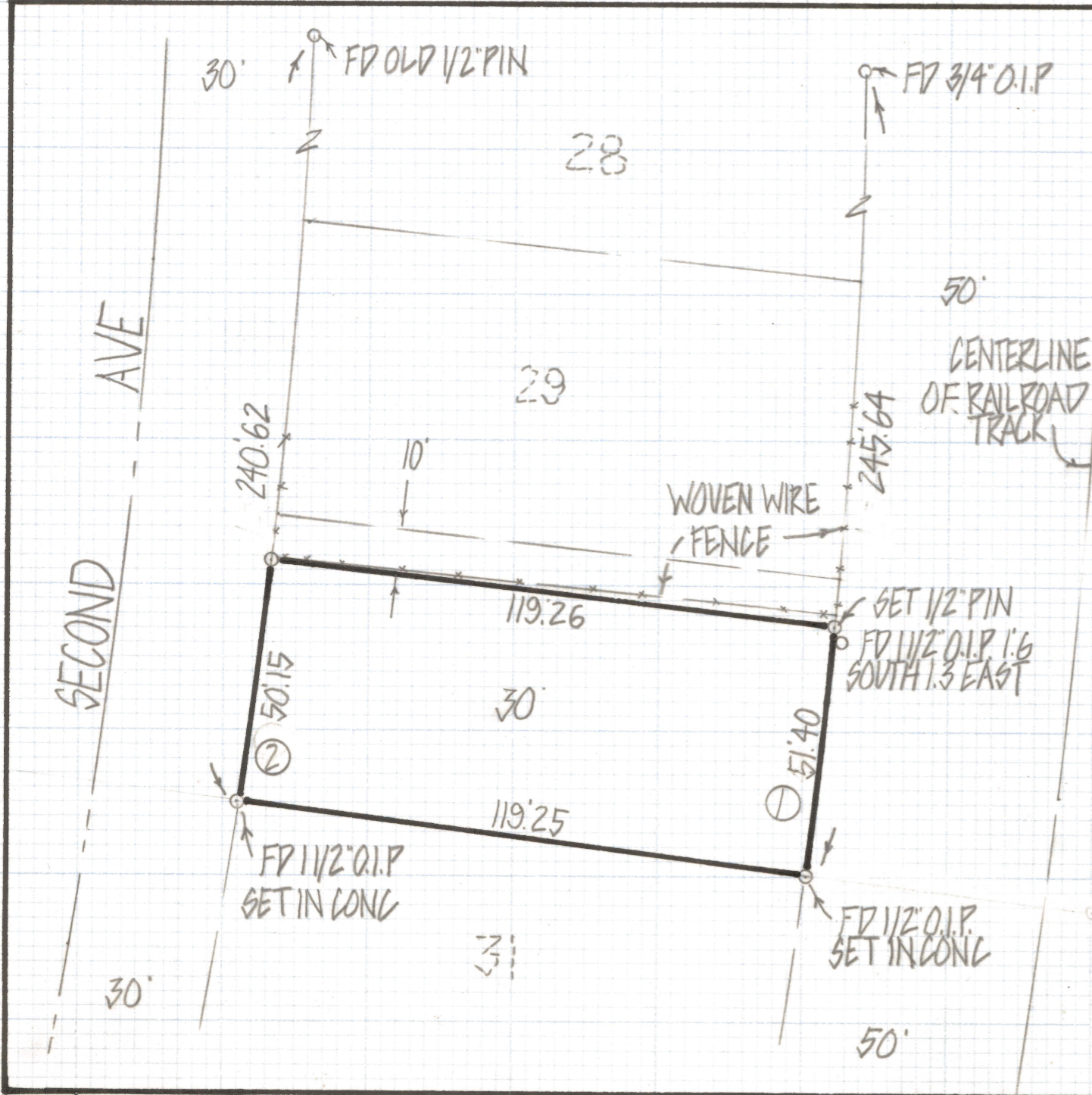


# **DISCLAIMER:**

**This unrecorded Record of Survey was donated to the City of Tucson. The City of Tucson provides this data for your personal use "as is." Additionally, the City of Tucson provides this information with the understanding that it is not guaranteed to be accurate, correct or complete and conclusions drawn from such information are the responsibility of the user.**



CURVE DATA					
Nº	RADIUS	DELTA	TANGENT	LENGTH	CHORD
1	5679.65	0°31'06"	25.70	51.40	51.40
2	5559.65	0°31'00"	25.07	50.15	50.15



RESULTS OF SURVEY

OF LOT 30 BLOCK 1 EXCEPT THE NORTH 10 FEET HOMELAND SUBDIVISION RECORDED IN BOOK 7 OF MAPS AND PLATS AT PAGE 31 IN THE OFFICE OF THE PIMA COUNTY RECORDER PIMA COUNTY ARIZONA

NOTES

(1) -  $\odot$  INDICATES SET 1/2" PIN MKD L.S. 4680 UNLESS NOTED



ROBERT F. MELLEN  
REGISTERED LAND SURVEYOR  
TULSON, ARIZONA  
JOB # 82-20