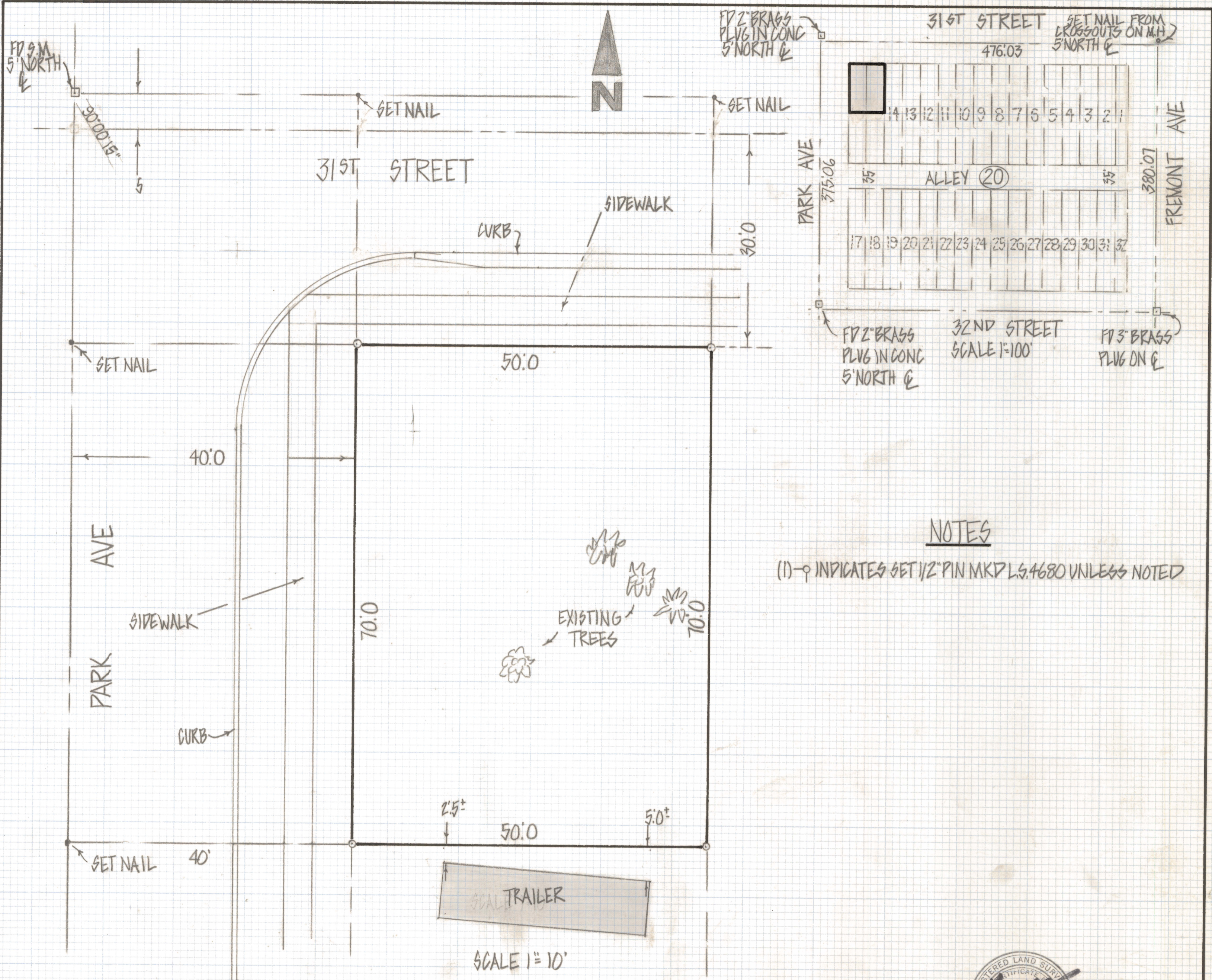


# **DISCLAIMER:**

**This unrecorded Record of Survey was donated to the City of Tucson. The City of Tucson provides this data for your personal use "as is." Additionally, the City of Tucson provides this information with the understanding that it is not guaranteed to be accurate, correct or complete and conclusions drawn from such information are the responsibility of the user.**





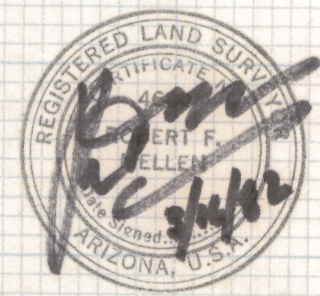
|            |    |    |    |    |    |    |    |    |    |    |    |    |    |    |    |
|------------|----|----|----|----|----|----|----|----|----|----|----|----|----|----|----|
| 14         | 13 | 12 | 11 | 10 | 9  | 8  | 7  | 6  | 5  | 4  | 3  | 2  | 1  |    |    |
| ALLEY (20) |    |    |    |    |    |    |    |    |    |    |    |    |    |    |    |
| 17         | 18 | 19 | 20 | 21 | 22 | 23 | 24 | 25 | 26 | 27 | 28 | 29 | 30 | 31 | 32 |

NOTES

(1) -  $\circ$  INDICATES SET 1/2" PIN MKP L.S. 4680 UNLESS NOTED

RESULTS OF SURVEY

OF THE NORTH HALF OF LOTS 16 AND 15 BLOCK 20 MIRASOL ADDITION RECORDED IN BOOK 5 OF MAPS AND PLATS AT PAGE 53 IN THE OFFICE OF THE PIMA COUNTY RECORDER PIMA COUNTY ARIZONA



ROBERT F. MELLEN  
 REGISTERED LAND SURVEYOR  
 TUCSON, ARIZONA  
 JOB# 82-25