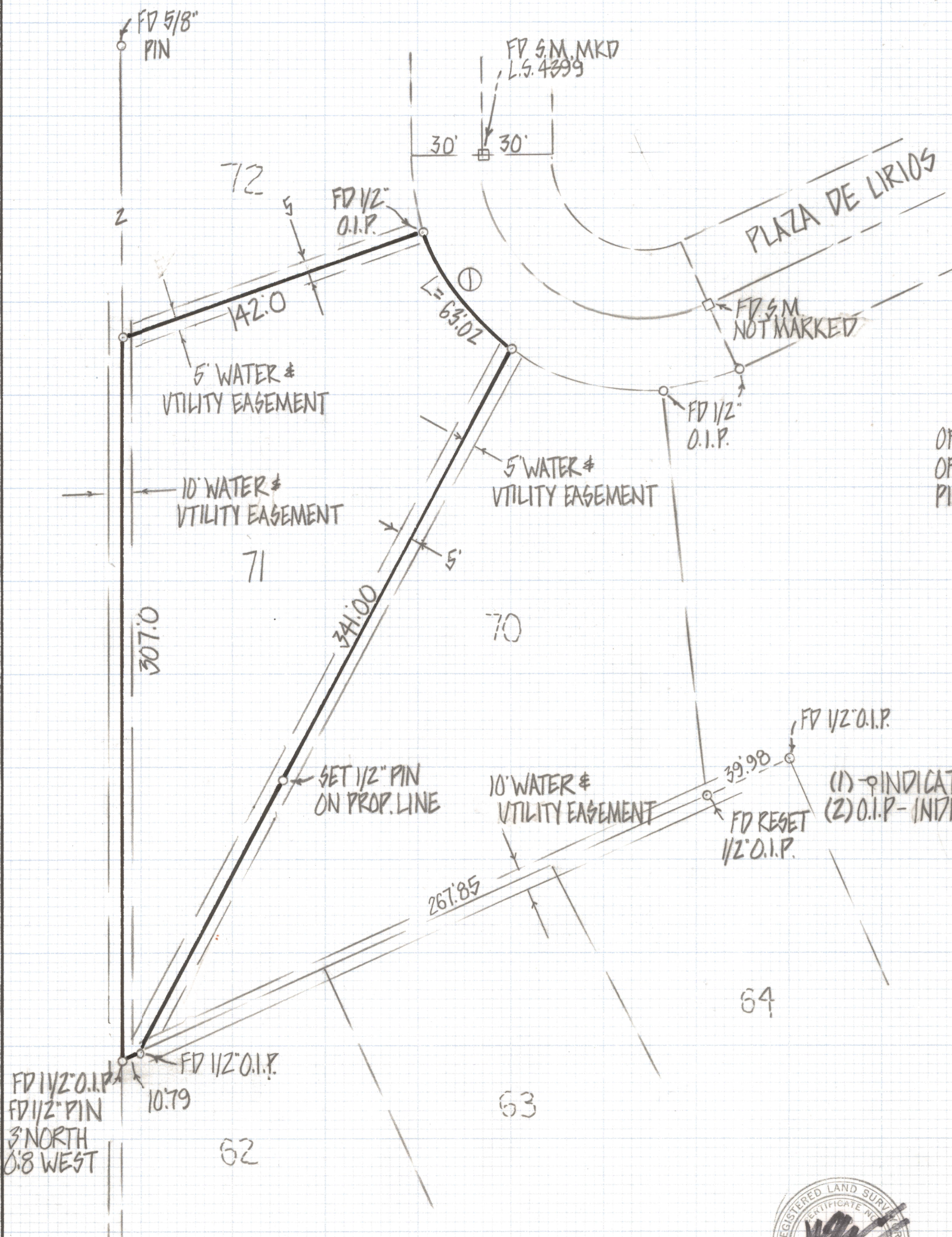
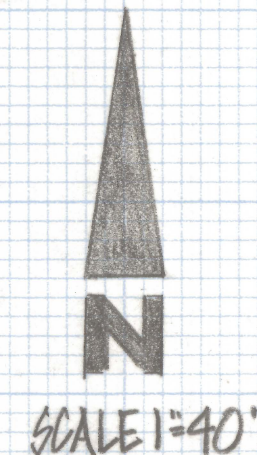


DISCLAIMER:

This unrecorded Record of Survey was donated to the City of Tucson. The City of Tucson provides this data for your personal use "as is." Additionally, the City of Tucson provides this information with the understanding that it is not guaranteed to be accurate, correct or complete and conclusions drawn from such information are the responsibility of the user.

CURVE DATA					
N°	RADIUS	DELTA	TANGENT	CHORD	LENGTH
1	100.0	36°06'23"	32'59"	61.98	63'02"



RESULTS OF SURVEY

OF LOT 71 MIRAFLORES ESTATES RECORDED IN BOOK 12
OF MAPS AND PLATS AT PAGE 90 IN THE OFFICE OF THE
PIMA COUNTY RECORDER PIMA COUNTY ARIZONA

NOTES

- (1) - INDICATES SET 1/2" PIN MKD L.S. 4680 UNLESS NOTED
(2) O.I.P. - INDICATES OPEN IRON PIPE



ROBERT F. MELLEN
REGISTERED LAND SURVEYOR
TUCSON, ARIZONA
JOB# 82-27