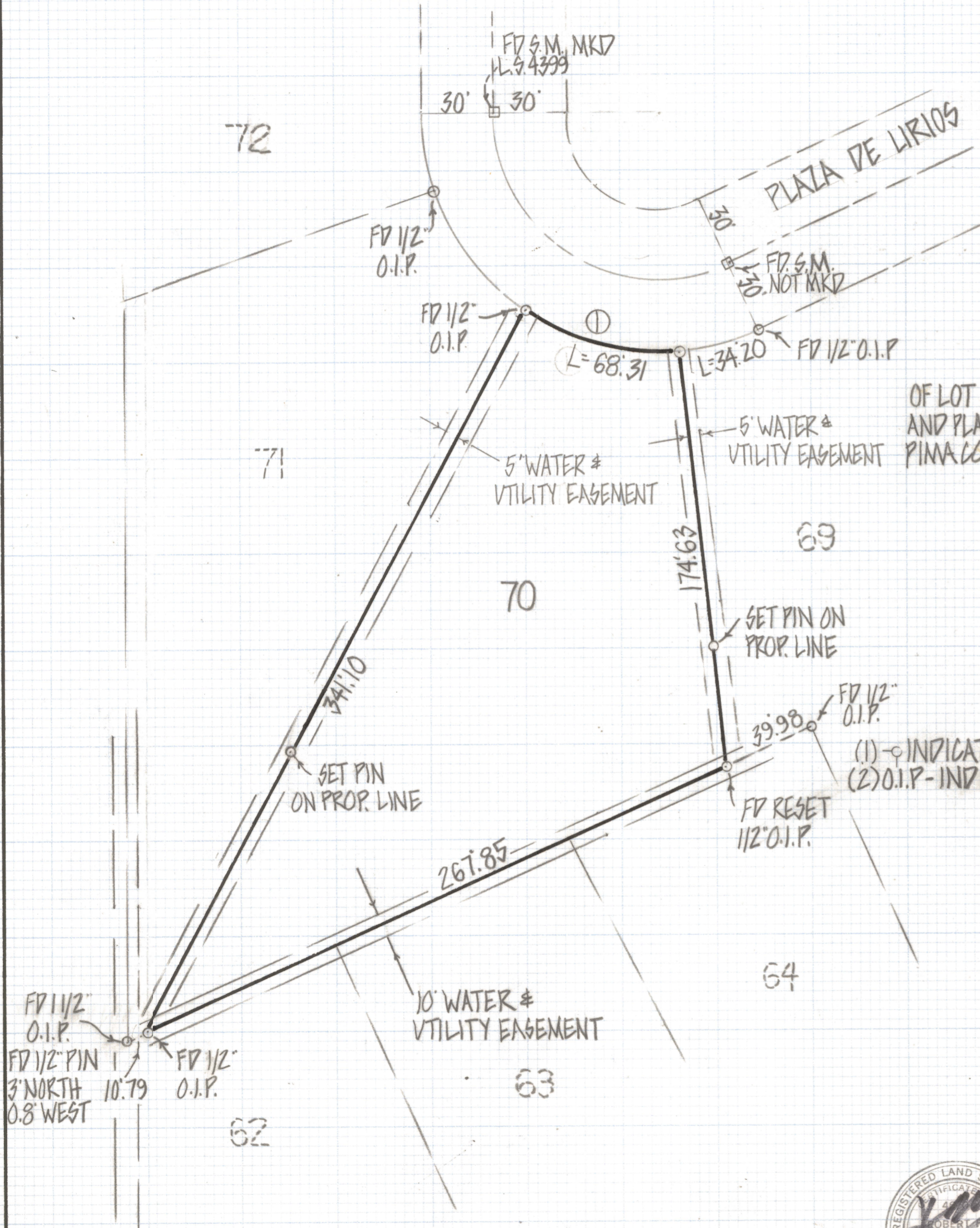
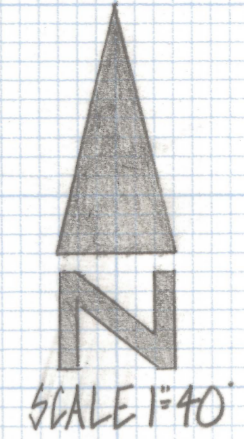


DISCLAIMER:

This unrecorded Record of Survey was donated to the City of Tucson. The City of Tucson provides this data for your personal use "as is." Additionally, the City of Tucson provides this information with the understanding that it is not guaranteed to be accurate, correct or complete and conclusions drawn from such information are the responsibility of the user.

CURVE DATA					
NO	RADIUS	DELTA	TANGENT	CHORD	LENGTH
1	100.0	39°08'19"	55.55	66.99	68.31



RESULTS OF SURVEY

OF LOT 70 MIRAFLORES ESTATES RECORDED IN BOOK 12 OF MAPS AND PLATS AT PAGE 90 IN THE OFFICE OF THE PIMA COUNTY RECORDER PIMA COUNTY ARIZONA

NOTES

- (1) \odot INDICATES SET 1/2" PIN MKD L.G. 4680 UNLESS NOTED
- (2) O.I.P. - INDICATES OPEN IRON PIPE



ROBERT F. MELLEN
 REGISTERED LAND SURVEYOR
 TUCSON, ARIZONA
 JOB# 82-27