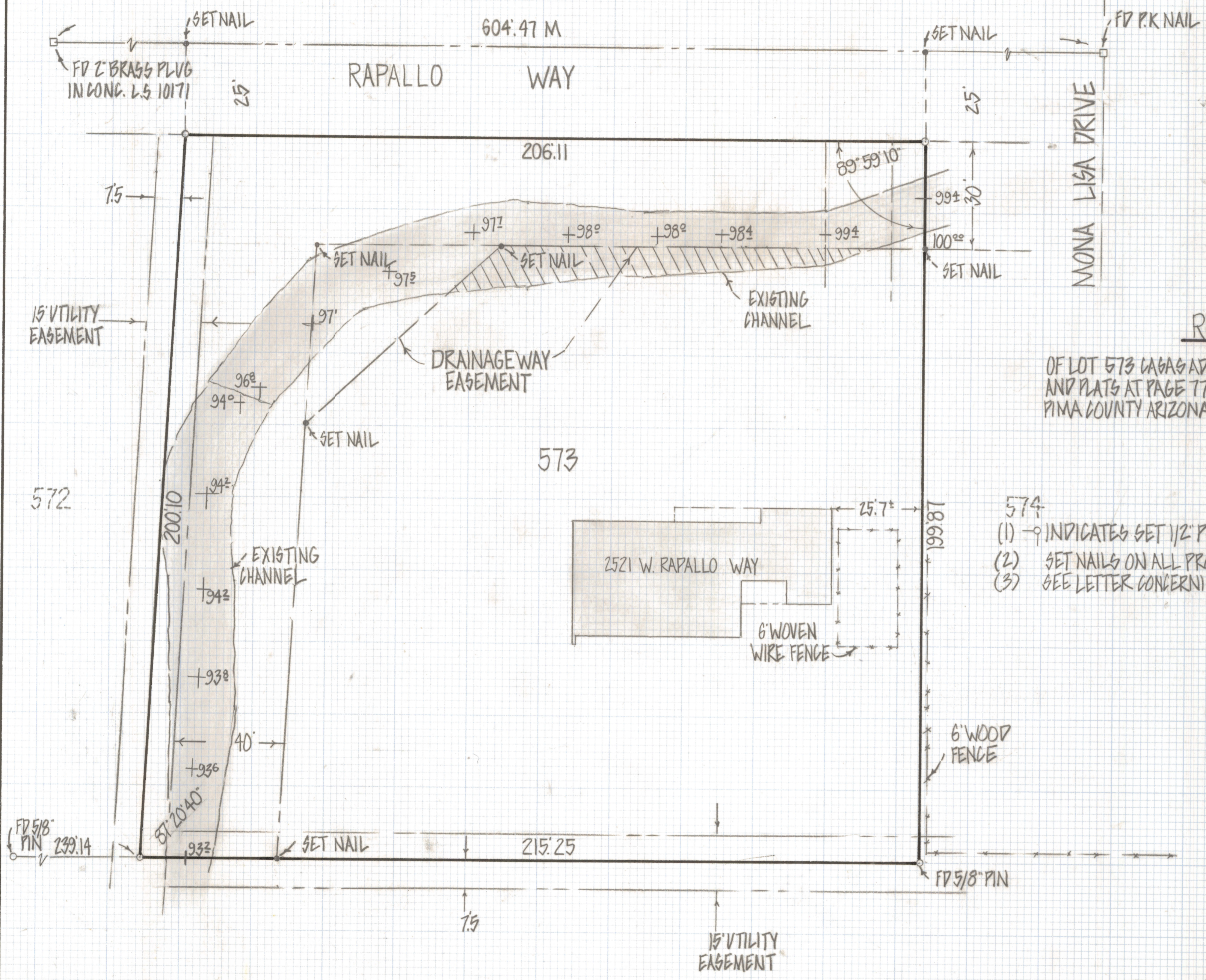


# **DISCLAIMER:**

**This unrecorded Record of Survey was donated to the City of Tucson. The City of Tucson provides this data for your personal use "as is." Additionally, the City of Tucson provides this information with the understanding that it is not guaranteed to be accurate, correct or complete and conclusions drawn from such information are the responsibility of the user.**



RESULTS OF SURVEY

OF LOT 573 CAGAS ADOBES ESTATES RECORDED IN BOOK 17 OF MAPS AND PLATS AT PAGE 77 IN THE OFFICE OF THE PIMA COUNTY RECORDER PIMA COUNTY ARIZONA

NOTES

- 574
- (1)  $\circ$  INDICATES SET 1/2" PIN MKD L.S. 4680 UNLESS NOTED
  - (2) SET NAILS ON ALL PROPERTY LINES
  - (3) SEE LETTER CONCERNING DRAINAGE CHANNEL



ROBERT F. MELLEN  
REGISTERED LAND SURVEYOR  
TUCSON, ARIZONA  
JOB # 82-38