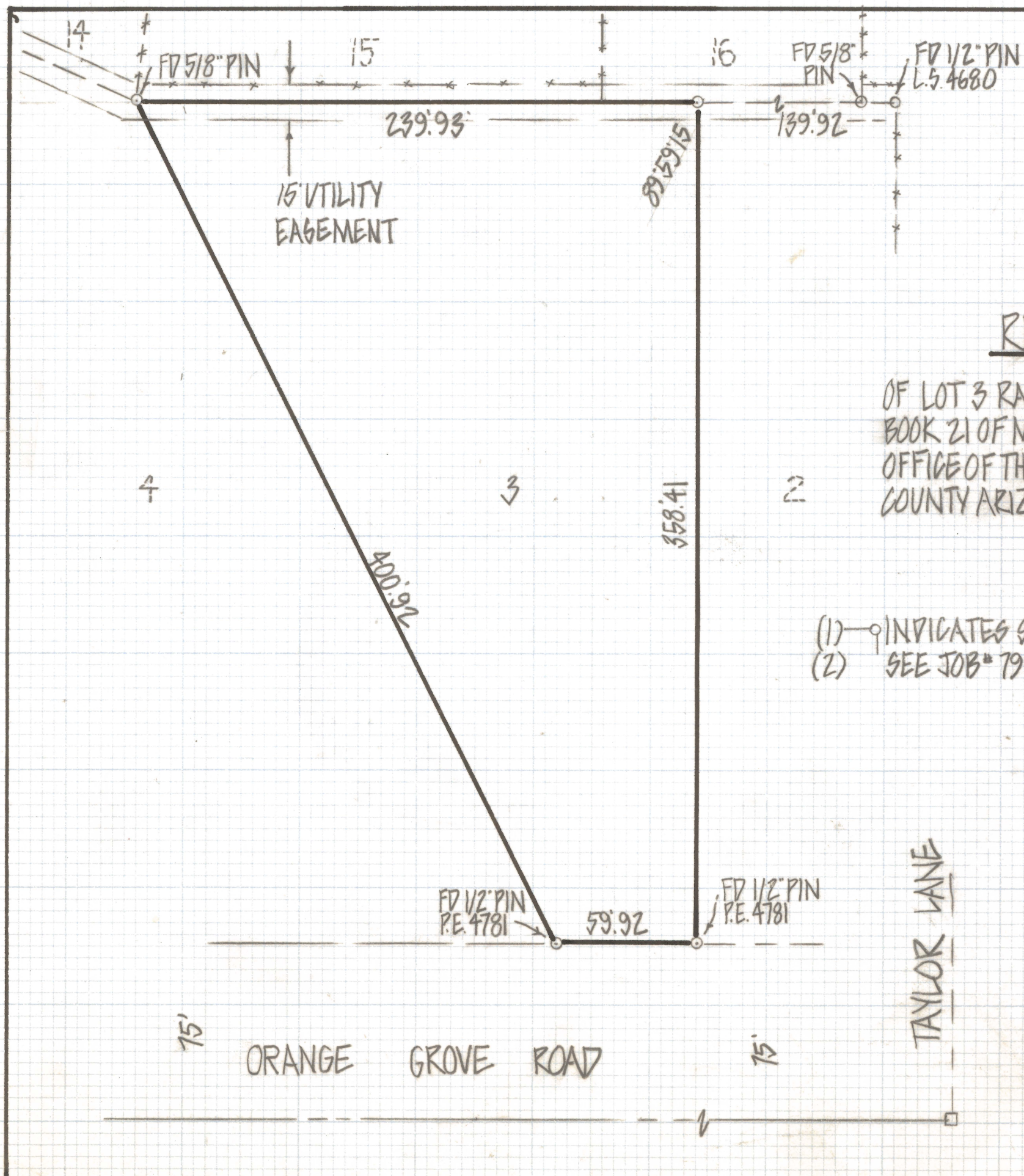


# **DISCLAIMER:**

**This unrecorded Record of Survey was donated to the City of Tucson. The City of Tucson provides this data for your personal use "as is." Additionally, the City of Tucson provides this information with the understanding that it is not guaranteed to be accurate, correct or complete and conclusions drawn from such information are the responsibility of the user.**





RESULTS OF SURVEY

OF LOT 3 RANCHO DEL NORTE RECORDED IN BOOK 21 OF MAPS AND PLATS AT PAGE 70 IN THE OFFICE OF THE PIMA COUNTY RECORDER PIMA COUNTY ARIZONA

NOTES

- (1) —○ INDICATES SET 1/2" PIN MKD L.S. 4680 UNLESS NOTED
- (2) SEE JOB# 79-78



ROBERT F. MELLEN  
 REGISTERED LAND SURVEYOR  
 TUCSON, ARIZONA  
 JOB# 82-43