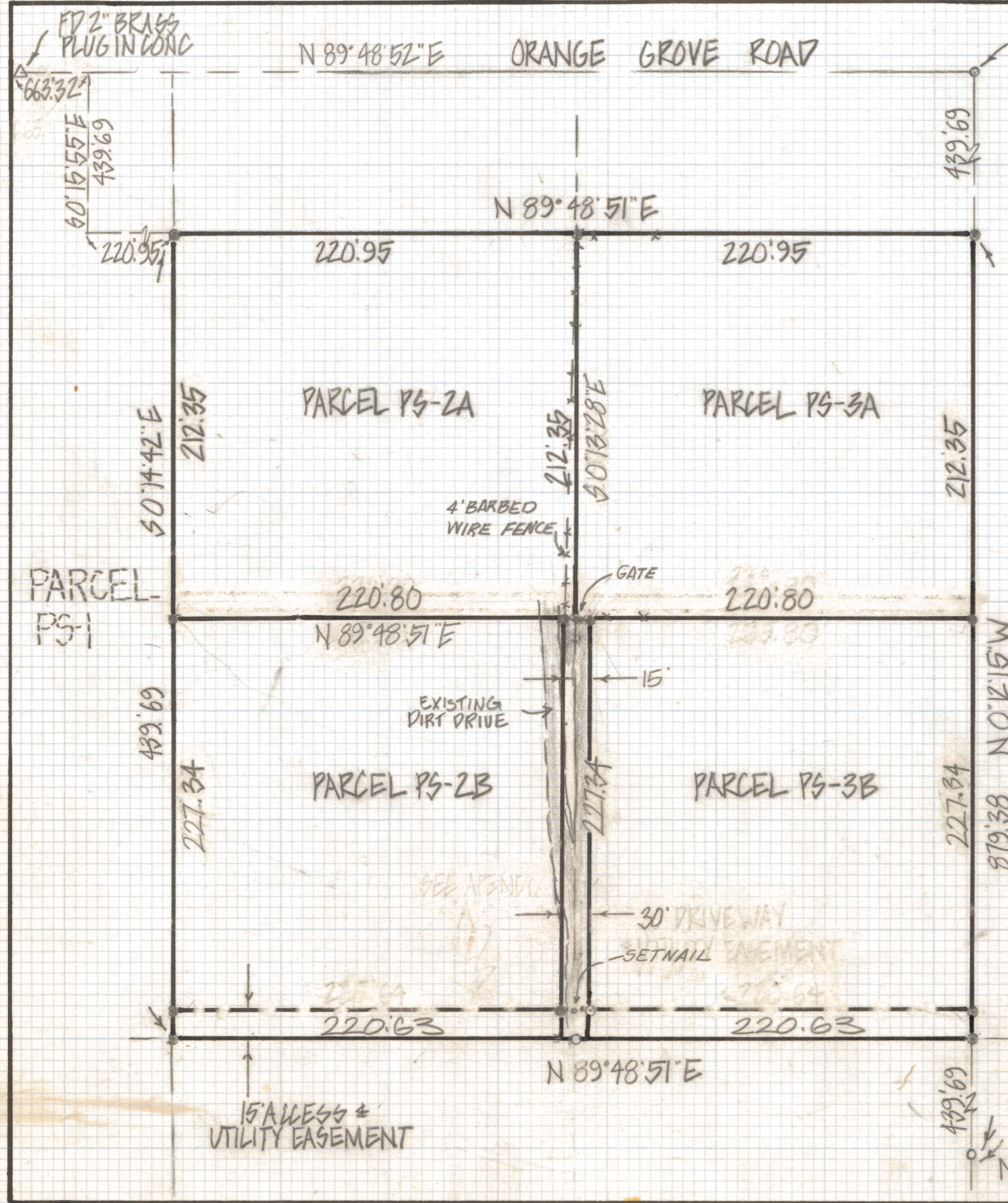


DISCLAIMER:

This unrecorded Record of Survey was donated to the City of Tucson. The City of Tucson provides this data for your personal use "as is." Additionally, the City of Tucson provides this information with the understanding that it is not guaranteed to be accurate, correct or complete and conclusions drawn from such information are the responsibility of the user.



RESULTS OF SURVEY

OF A PORTION OF THE NORTHWEST QUARTER OF THE
 NORTHEAST QUARTER OF SECTION 9 TOWNSHIP 13
 SOUTH RANGE 11 EAST GILA AND SALT RIVER BASE
 AND MERIDIAN PIMA COUNTY ARIZONA

NOTES

- (1) - INDICATES END 1/2" PIN MKD L.S. 4680 UNLESS NOTED
- (2) - SEE JOB # 81-41 AND JOB # 80-17
- (3) - INDICATES SET 1/2 PIN L.S. 4680 11/18/87 UNLESS NOTED



ROBERT F. MELLEN
 REGISTERED LAND SURVEYOR
 TUCSON, ARIZONA
 JOB # 82-43

FD A.C.P MKD
 NEWLIN P.E. 1918
 11/18/87 REVISED CORNERS, FENCE
 REVISED DRIVE 6/20/83
 8/2/83