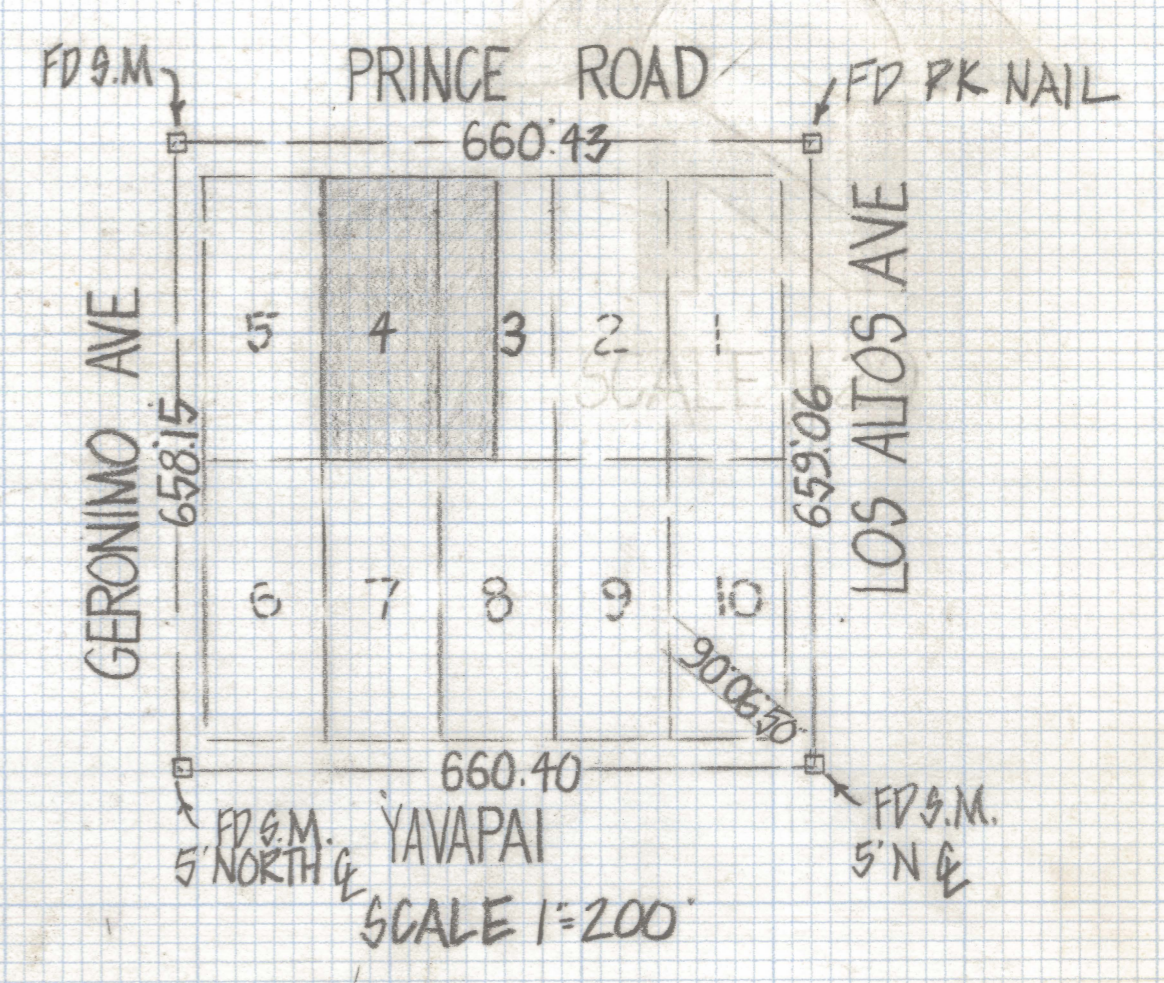
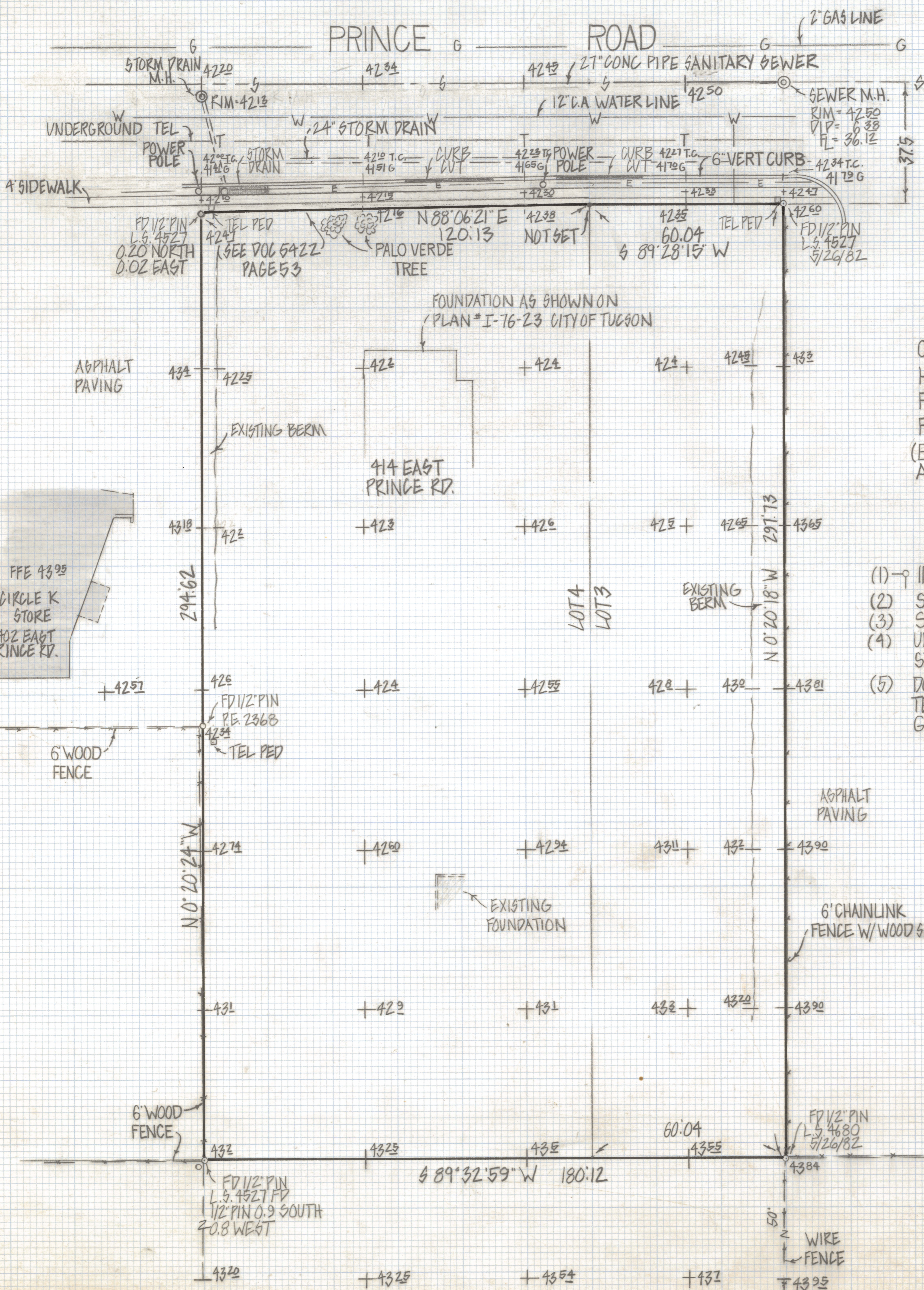


DISCLAIMER:

This unrecorded Record of Survey was donated to the City of Tucson. The City of Tucson provides this data for your personal use "as is." Additionally, the City of Tucson provides this information with the understanding that it is not guaranteed to be accurate, correct or complete and conclusions drawn from such information are the responsibility of the user.



RESULTS OF SURVEY

OF LOT 4 AND THE WEST HALF OF LOT 3 BLOCK 2 GARDEN HOMES ADDITION RECORDED IN BOOK 6 OF MAPS AND PLATS AT PAGE 41 IN THE OFFICE OF THE PIMA COUNTY RECORDER PIMA COUNTY ARIZONA (EXCEPT THAT PORTION OF LOT 4 DESCRIBED IN DOC 5442 AT PAGE 53)

NOTES

- (1) - INDICATES SET 1/2" PIN MKD L.S. 4680 UNLESS NOTED
- (2) SEE JOB # 81-21
- (3) SEE CITY OF TUCSON PLAN I-76-23
- (4) UNDERGROUND UTILITIES FROM AVAILABLE MAPS CALL BLUE STAKE 792-2221 FOR CRITICAL LOCATION
- (5) DOC 49 PAGE 623 IS A BLANKET EASEMENT FOR ELECTRIC AND TELEPHONE LINES OVER THE WEST ONE HALF OF BLOCK 2 GARDEN HOMES



ROBERT F. MELLEN
REGISTERED LAND SURVEYOR
TUCSON, ARIZONA
JOB # 82-48