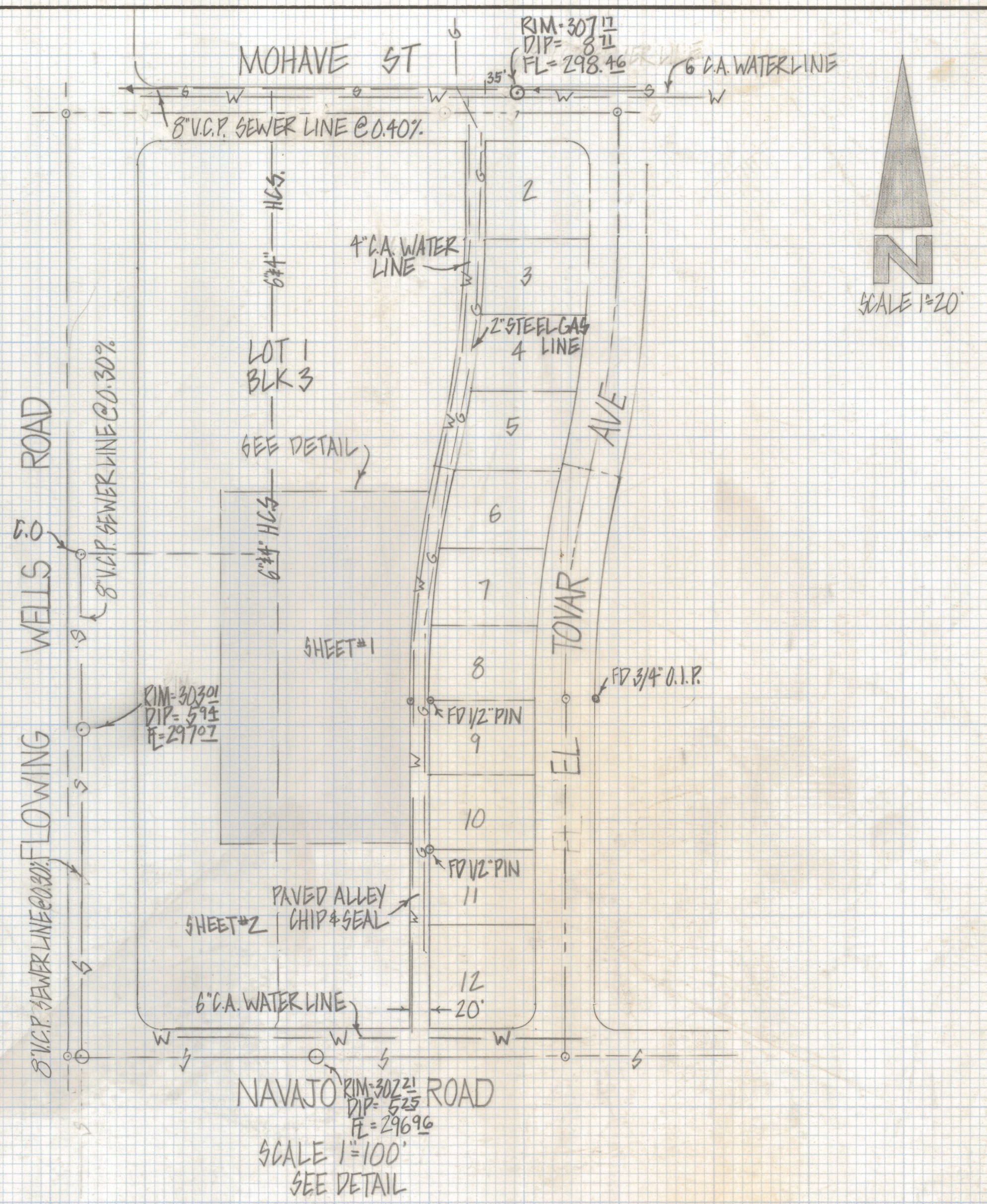
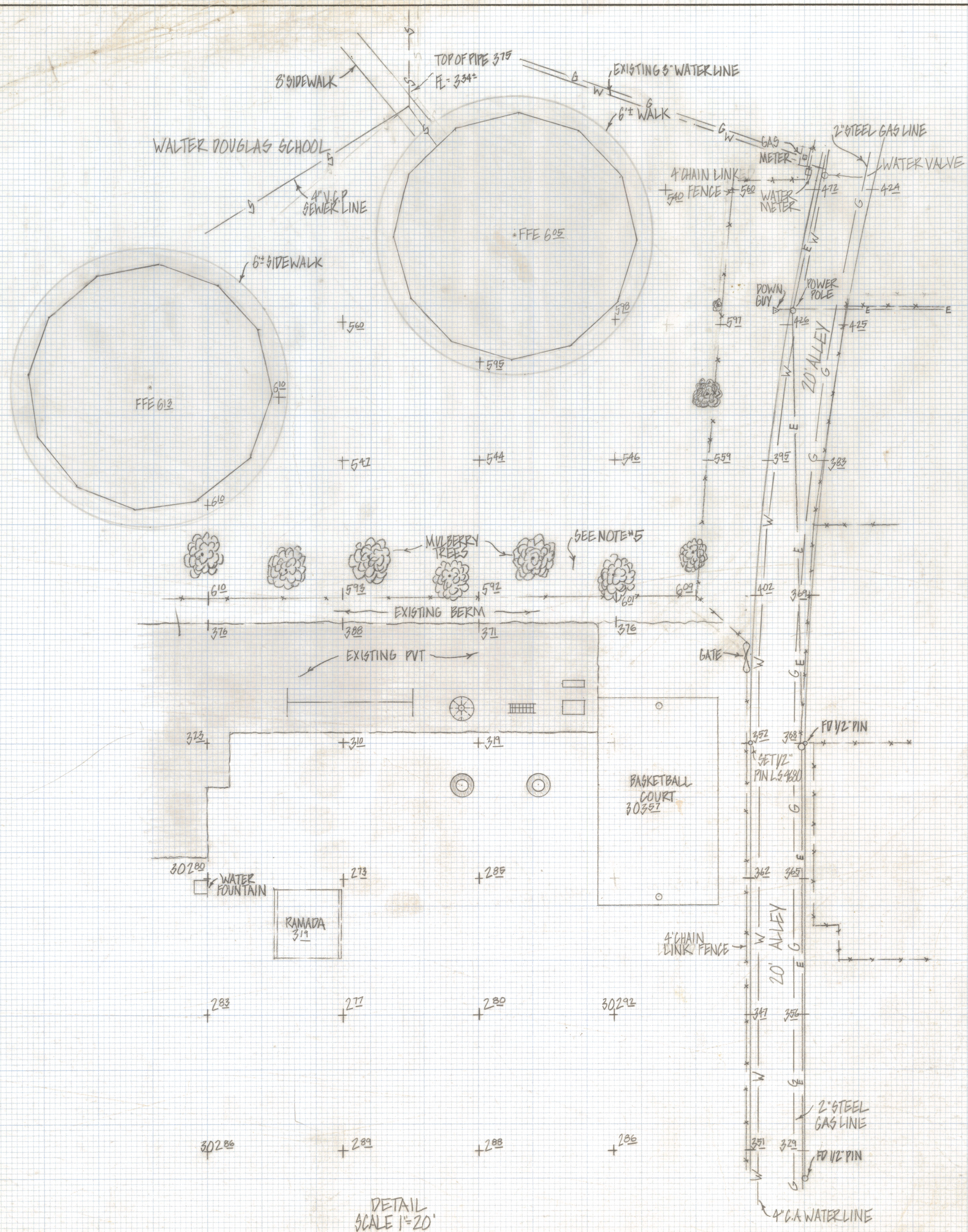


DISCLAIMER:

This unrecorded Record of Survey was donated to the City of Tucson. The City of Tucson provides this data for your personal use "as is." Additionally, the City of Tucson provides this information with the understanding that it is not guaranteed to be accurate, correct or complete and conclusions drawn from such information are the responsibility of the user.



RESULTS OF SURVEY
OF A PORTION OF LOT 1 BLOCK 3 FLOWING WELLS VILLAGE RECORDED IN BOOK 10 OF MAPS AND PLATS AT PAGE 59 IN THE OFFICE OF THE PINA COUNTY RECORDER PINA COUNTY ARIZONA

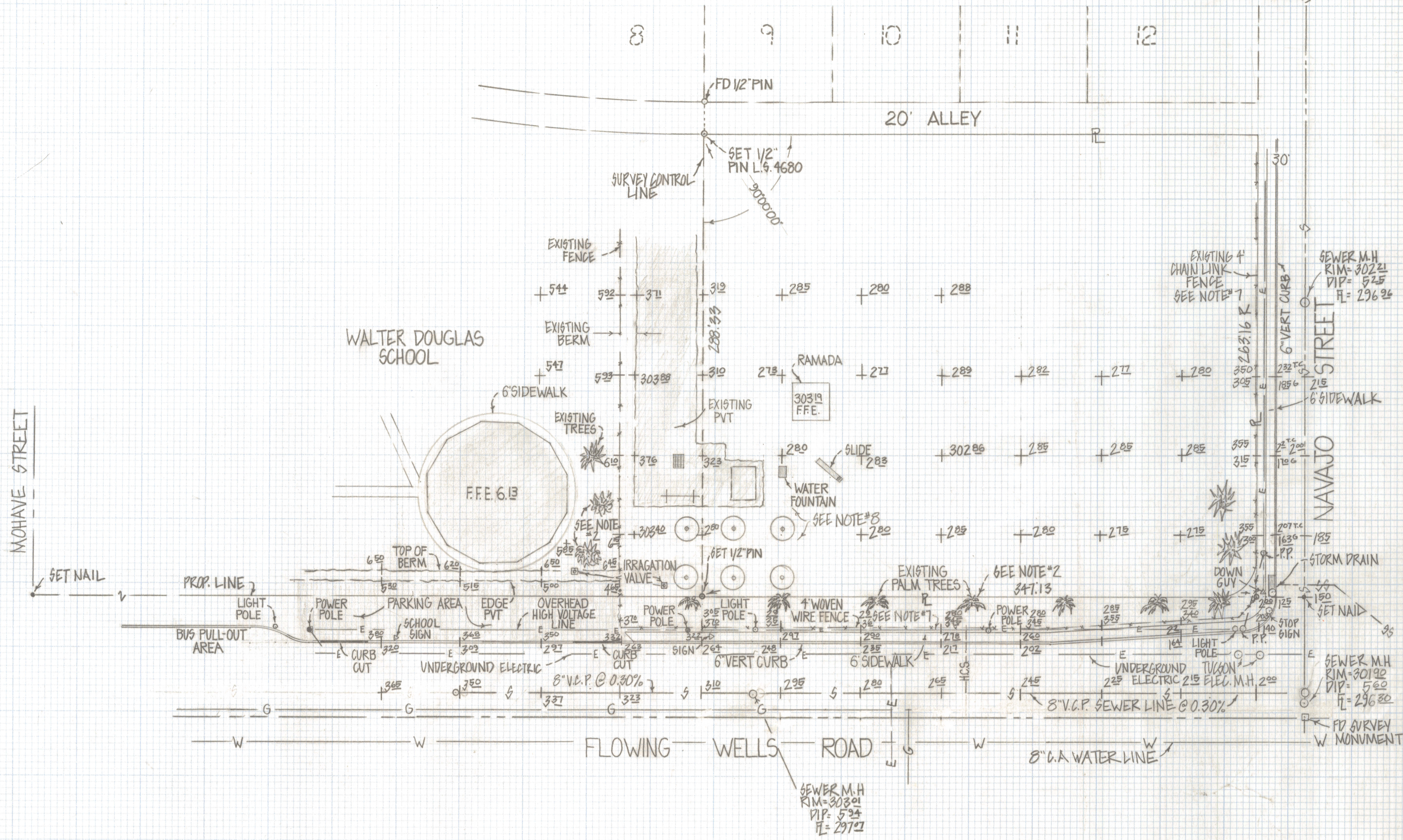
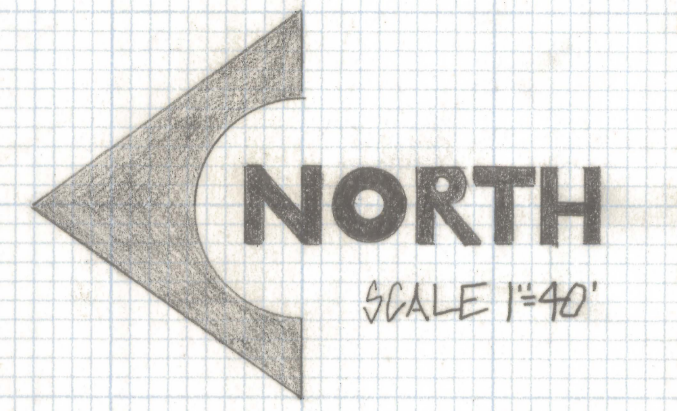
- NOTES**
- (1) LOCATION OF UNDERGROUND UTILITIES ARE FROM EXISTING MAPS IF LOCATION IS CRITICAL CALL BLUE STAKE FOR LOCATION 792-2211
 - (2) SEE CITY OF TUCSON PLAN I-703 SHEET 6 (SEWER) SANITARY DIST #1 PLAN MULT #291-292 (SEWER)
 - (3) WATER INFORMATION FROM MR DAVID FUREY FLOWING WELLS IRRIGATION DIST 887-4192
 - (4) SEE CITY OF TUCSON PLAN I-65-84 BENCH MARK CITY OF TUCSON DATUM
 - (5) SPRINKLER SYSTEM IRRIGATES MULBERRY TREES

DETAIL SCALE 1"=20'



ROBERT F. MELLEN
REGISTERED LAND SURVEYOR
TUCSON, ARIZONA
JOB # 82-55
SHEET 1 OF 2

Z-2020-368-001



NOTES

- (1) LOCATION OF UNDERGROUND UTILITIES ARE FROM EXISTING MAPS IF LOCATION IS CRITICAL CALL BLUE STAKE FOR LOCATION 792-2211
- (2) SPRINKLER SYSTEM IRRIGATES MULBERRY TREES AND PALM TREES
- (3) SEE CITY OF TUCSON PLAN I-65-84 BENCH MARK CITY OF TUCSON DATUM
- (4) SEE CITY OF TUCSON PLAN I-703 SHEET 6 (SEWER) SANITARY DIST #1 PLAN MULT # 291-292 (SEWER)
- (5) R-MAP RECORD
- (6) M-MEASURED
- (7) THERE IS A BERM ON THE WEST AND SOUTH FENCE LINES OF PROPERTY THE ELEVATIONS ARE TO BOTTOM AND TOP OF BERM
- (8) THE AREA OF THE PROPOSED ADDITION IS IRRIGATED BY FLOOD IRRIGATION

RESULTS OF SURVEY

OF A PORTION OF LOT ONE BLOCK 3 FLOWING WELLS VILLAGE RECORDED IN BOOK 10 OF MAPS AND PLATS AT PAGE 59 IN THE OFFICE OF THE PIMA COUNTY RECORDER PIMA COUNTY ARIZONA



ROBERT F. MELLEN
REGISTERED LAND SURVEYOR
TUCSON, ARIZONA
JOB # 82-55
SHEET 2 OF 2

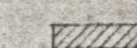
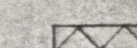
SET 10/12

F L O W I N G W E L L S R O A D

INDEX TO DRAWINGS

- 1 TITLE SHEET & PLOT PLAN
- 2 FLOOR PLAN & SCHEDULES
- 3 INTERIOR ELEVATIONS & DETAILS
- 4 MECHANICAL PLAN & DETAILS
- 5 PLUMBING PLAN & DIAGRAMS
- 6 ELECTRICAL PLAN & SCHEDULES

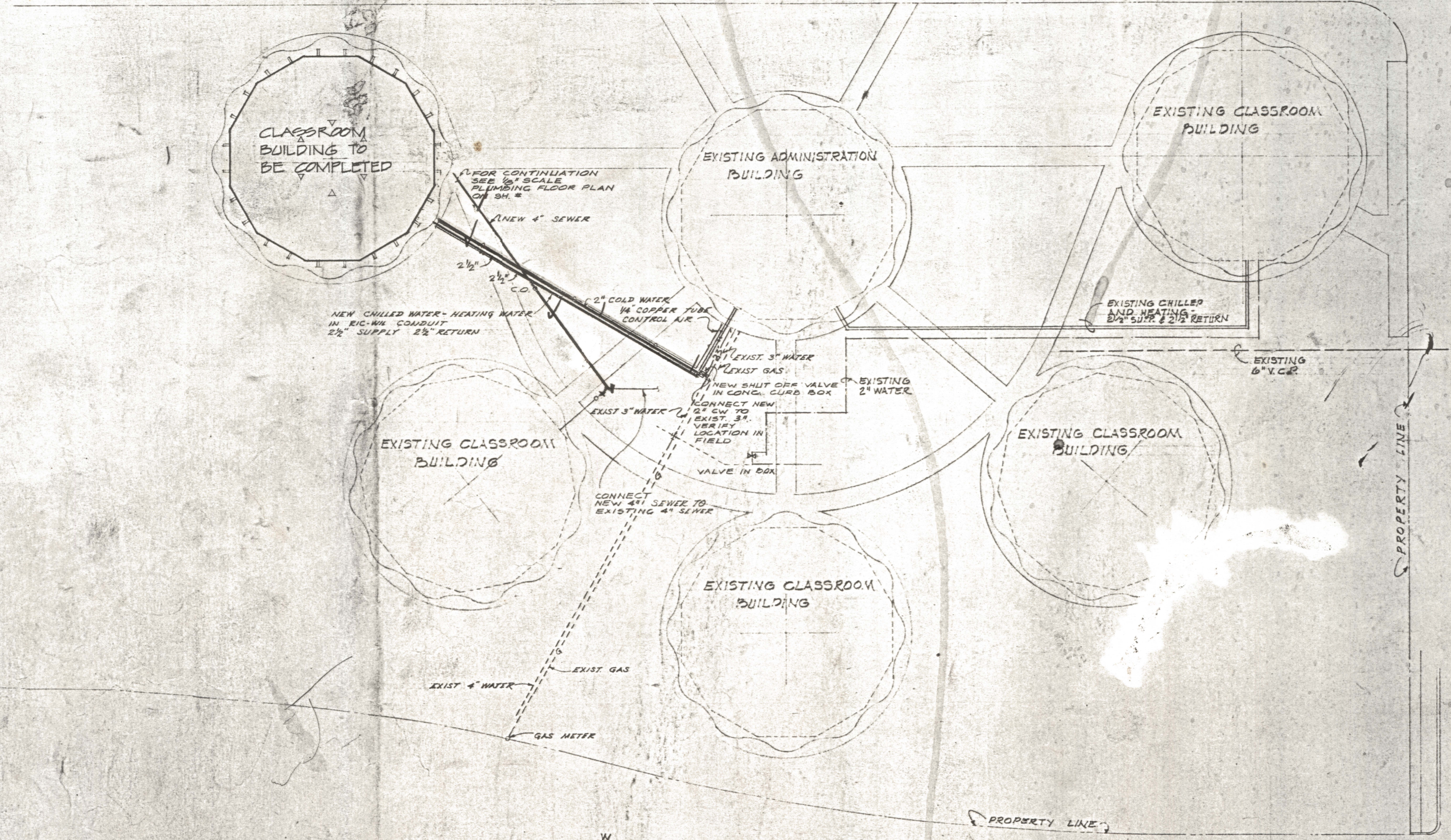
KEY TO MATERIALS

-  BRICK
-  PLASTERED PARTITION

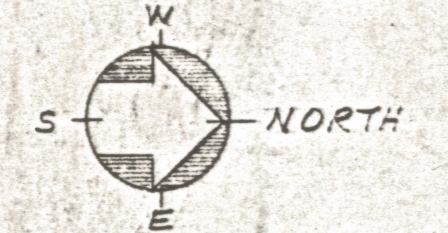
BOARD OF TRUSTEES

Walter Douglas
Richard Richardson
H.E. Spamm

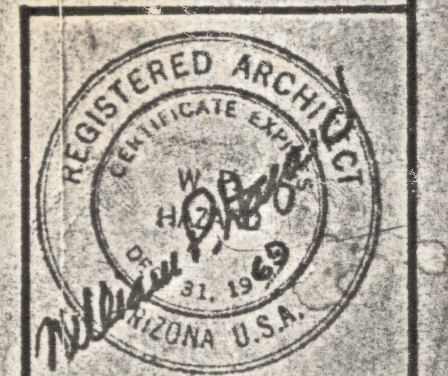
W.P. Hazard
12/20/55



P L O T P L A N
 SCALE 1" = 30'-0"



COMPLETION of CLASSROOM BUILDING at WALTER DOUGLAS SCHOOL
 Flowing Wells Elementary Schools - School District Number Eight
 Tucson, Arizona



WILLIAM P. HAZARD
 Architect
 115 W. WASHINGTON ST.
 TUCSON, ARIZONA 85701

DATE: 12/20/55 SHEET No. 1
 COMM. No. 6818 OF 6