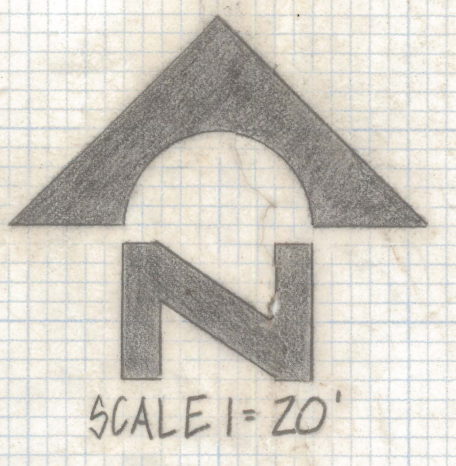
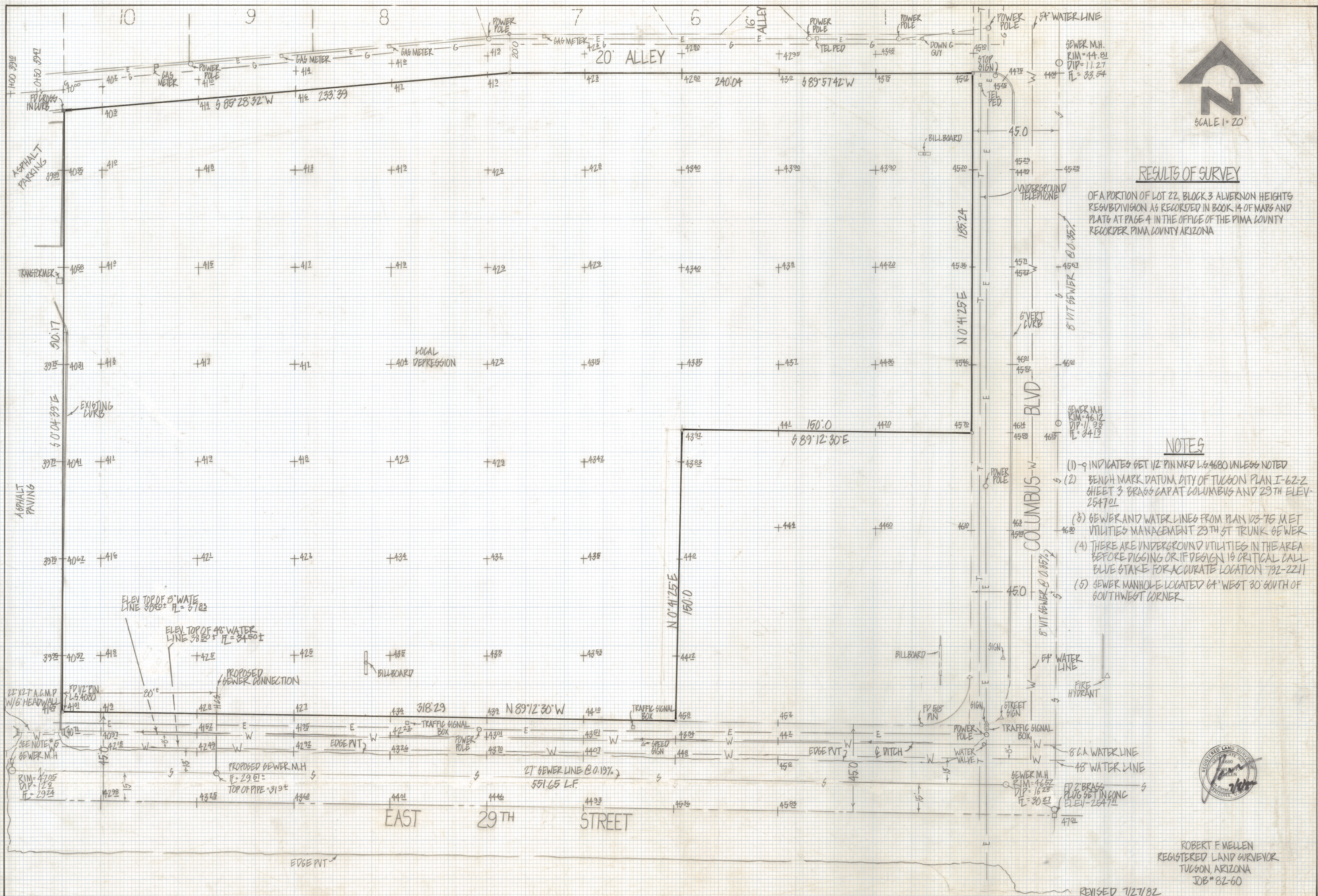


DISCLAIMER:

This unrecorded Record of Survey was donated to the City of Tucson. The City of Tucson provides this data for your personal use "as is." Additionally, the City of Tucson provides this information with the understanding that it is not guaranteed to be accurate, correct or complete and conclusions drawn from such information are the responsibility of the user.



RESULTS OF SURVEY

OF A PORTION OF LOT 22, BLOCK 3 ALVERNON HEIGHTS RESUBDIVISION AS RECORDED IN BOOK 14 OF MAPS AND PLATS AT PAGE 4 IN THE OFFICE OF THE PINA COUNTY RECORDER PINA COUNTY ARIZONA

NOTES

- (1) \ominus INDICATES SET 1/2" PIN MKD L.S. 4680 UNLESS NOTED
- (2) BENCH MARK DATUM CITY OF TUCSON PLAN I-62-2 SHEET 3 BRASS CAP AT COLUMBUS AND 29TH ELEV. 2547.01
- (3) SEWER AND WATER LINES FROM PLAN 103-75 MET UTILITIES MANAGEMENT 29TH ST TRUNK SEWER
- (4) THERE ARE UNDERGROUND UTILITIES IN THE AREA BEFORE DIGGING OR IF DESIGN IS CRITICAL CALL BLUE STAKE FOR ACCURATE LOCATION 792-2211
- (5) SEWER MANHOLE LOCATED 64' WEST 30' SOUTH OF SOUTHWEST CORNER



ROBERT F. MELLEN
REGISTERED LAND SURVEYOR
TUCSON, ARIZONA
JOB #82-60

REVISED 7/27/82