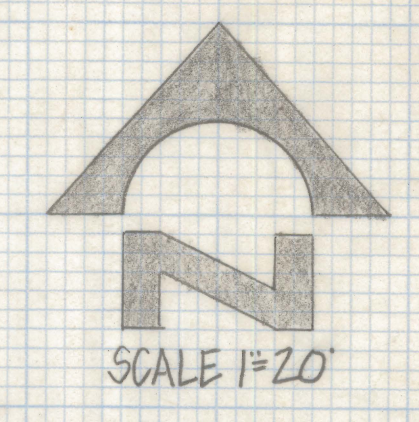
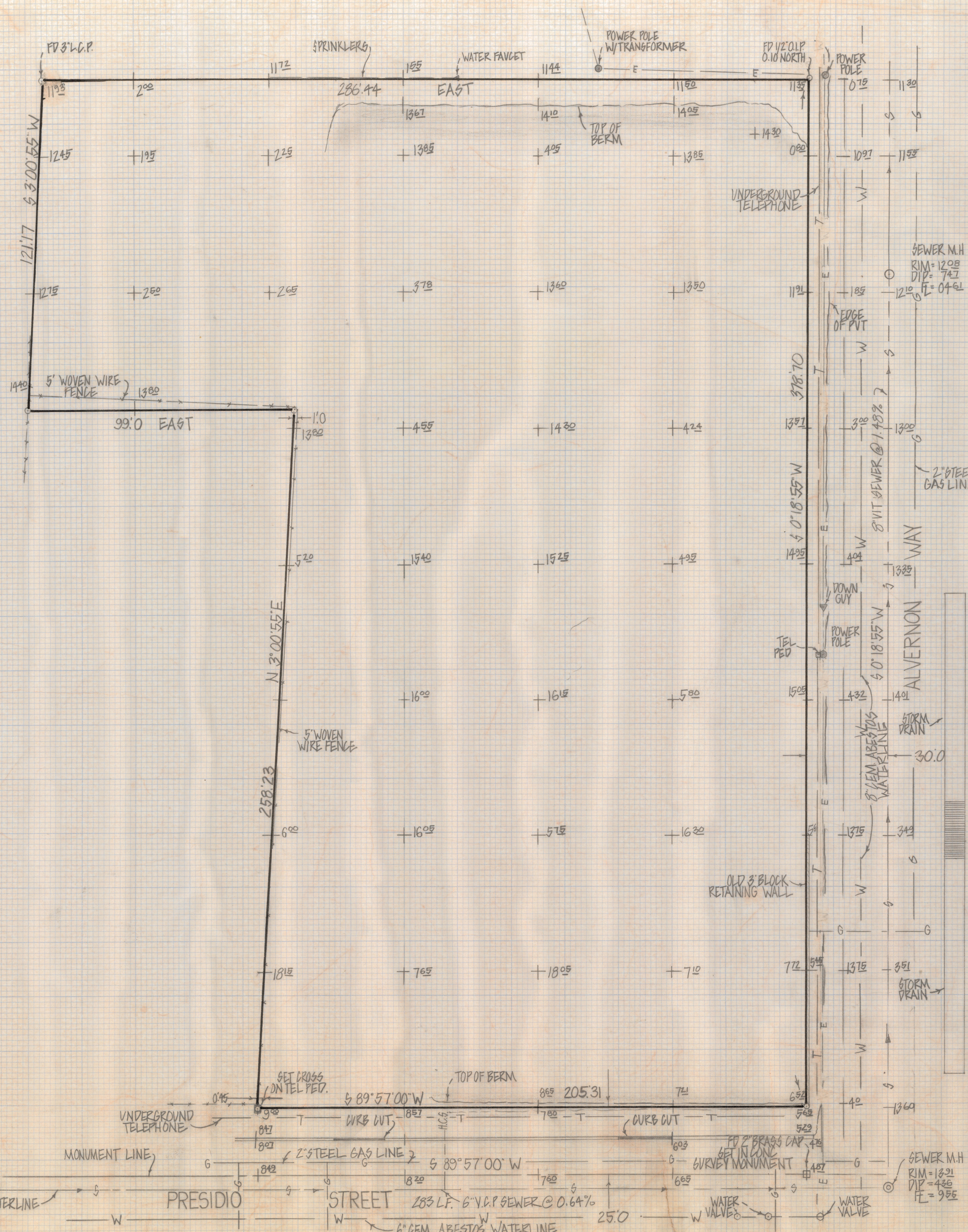


# **DISCLAIMER:**

**This unrecorded Record of Survey was donated to the City of Tucson. The City of Tucson provides this data for your personal use "as is." Additionally, the City of Tucson provides this information with the understanding that it is not guaranteed to be accurate, correct or complete and conclusions drawn from such information are the responsibility of the user.**



## RESULTS OF SURVEY

OF A PORTION OF THE NORTHEAST OF THE NORTHEAST OF THE NORTHEAST QUARTER SECTION 33 TOWNSHIP 13 SOUTH RANGE 14 EAST GILA AND SALT RIVER BASE AND MERIDIAN PIMA COUNTY ARIZONA

## NOTES

- (1) ○ INDICATES SET 1/2" PIN MKD L-6 4680 UNLESS NOTED
- (2) FIRE HYDRANTS LOCATED ON THE S.W. CORNER OF PRESIDIO AND ALVERNON AND ON THE S.W. CORNER OF ALVERNON AND FT. LOWEL
- (3) THERE ARE UNDERGROUND UTILITIES IN THE AREA BEFORE DIGGING OR IF LOCATION IS CRITICAL TO DESIGN CALL BLUE STAKE 792-2211
- (4) BENCH MARK DATUM CITY OF TUCSON FROM PLAN I-63-16 SHEET 5 OF 24



ROBERT F. MELLEN  
REGISTERED LAND SURVEYOR  
TUCSON, ARIZONA  
JOB #82-77