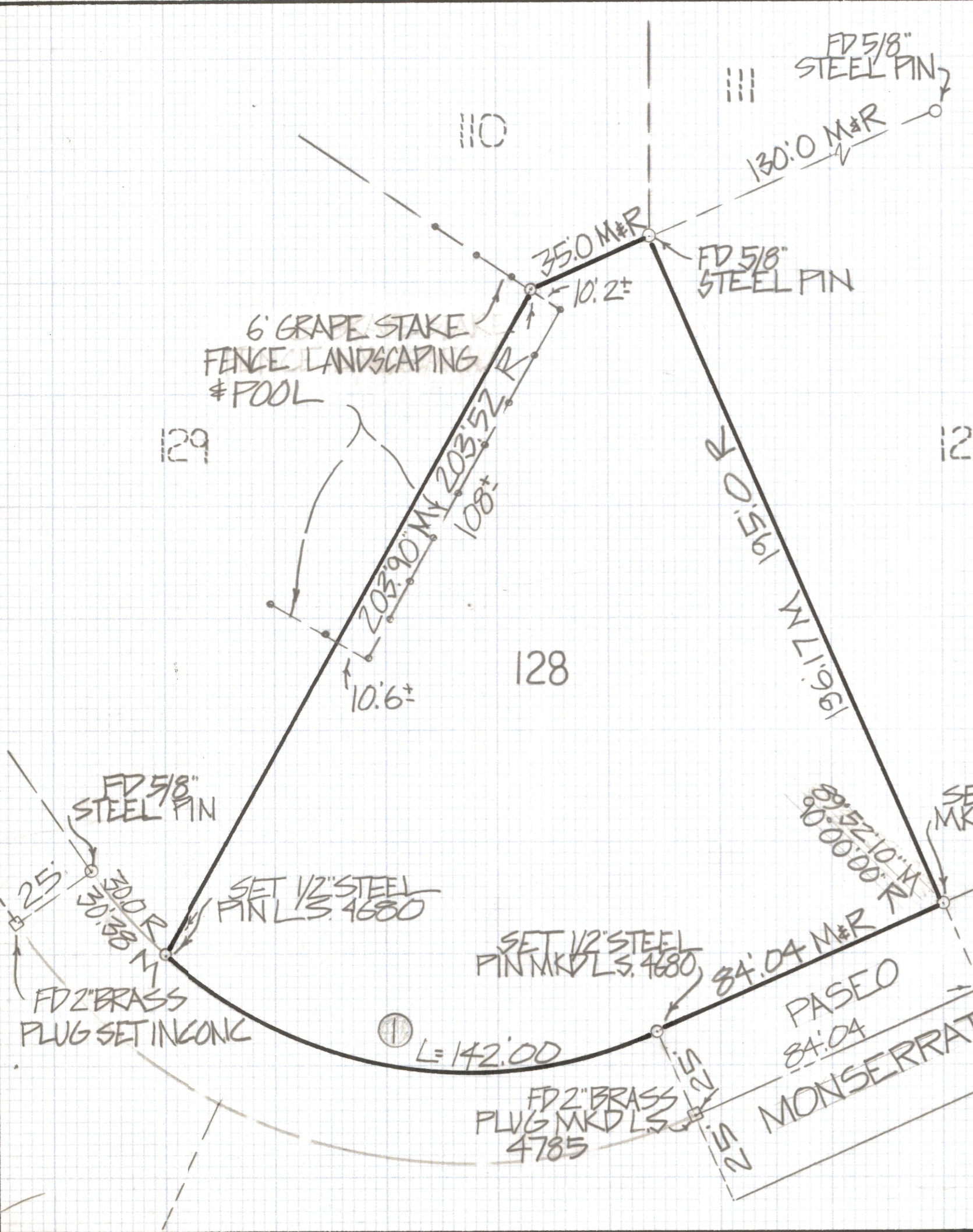


DISCLAIMER:

This unrecorded Record of Survey was donated to the City of Tucson. The City of Tucson provides this data for your personal use "as is." Additionally, the City of Tucson provides this information with the understanding that it is not guaranteed to be accurate, correct or complete and conclusions drawn from such information are the responsibility of the user.



CURVE DATA					
Nº	RADIUS	DELTA	LENGTH	TANGENT	CHORD
①	125.0	65°05'17"	142.00	79.77	134.49



RESULTS OF SURVEY

OF LOT 128 RANCHOS DE LA CANADA RECORDED IN BOOK 28 OF MAPS AND PLATS AT PAGE 99 IN THE OFFICE OF THE PINA COUNTY RECORDER PINA COUNTY ARIZONA

NOTES

- (1) M- MEASURED
- (2) R- MAP RECORD



ROBERT F. MELLEN
 REGISTERED LAND SURVEYOR
 TUCSON, ARIZONA
 JOB*82-81